



Auto Crane Price List

October 2022 Edition

10/1/2022

Prices: All prices in U.S. dollars. All prices are EX-WORKS - Tulsa, OK. **Prices and specifications are subject to change without notice.** All list prices are "not installed" unless noted otherwise.

Installation: Factory installed prices are based upon Auto Crane "standard" placement of certain options. Special configurations are available and will be quoted at additional cost.

Cancellation: Orders cancelled within 60 days prior to the scheduled ship date will be subject to a 25 percent restocking charge. Cancellation of orders for other than standard units will be subject to cancellation charges if received less than 90 days prior to scheduled ship date. There will be a 100 percent cancellation charge for any items such as paint or other non-standard products which have been ordered or produced by Auto Crane to satisfy a customer order.

This price list is not all encompassing of the products and parts available. Please contact Auto Crane customer service for pricing on specific items not found on this list. There is a separate price list available for parts only.

Auto Crane Company
PO Box 581510
Tulsa, OK 74158
Phone: (800) 777-2760
www.autocrane.us

Table of Contents

Cranes	2 - 21
Crane Accessories	22 - 23
NexStar Benefits	24
Crane Specs	25
Personnel Basket.....	26
Bodies	27 - 91
Titan 16 - 9'	27 - 33
Titan 16 - 11'	34 - 40
Titan 38 - 9'	41 - 47
Titan 38 - 11'	48 - 57
Titan 38 Propane	58 - 64
Titan 60 - 11'	65 - 73
Titan 60 - 14'	74 - 82
Titan 85 - 14'	83 - 91
Titan Connect	92
Power On Demand	93
Accessory Pictures	94
Chassis - Body - Crane Application.....	95
Saddles	96 - 98
Compressors & All-In-Ones	99 - 102
Welders	103
Lube Skids	104 - 105
Warranty	106 - 109

EC-2 Cranes – 5' Boom

Standard Features

- 10 ft Hard-Wired Control
- Comprehensive 2-year warranty starting at in-service

Options

- Manual rotation or power rotation
- Short pedestal or tall pedestal

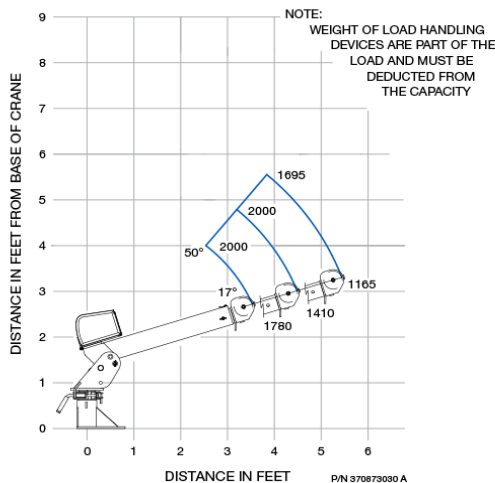
Specifications

- Capacity: 2,000 lb
- Rating: 6,500 ft-lb
- Reach: 5 ft
- Rotation: 325° manual rotation & 355° power rotation
- Cable: 25 ft of 1/4"
- Chassis GVW: 5,200 lb min
- Weight: 230 lbs
- Boom Angle: 17° to 50°
- Hoist Speed: 9 fpm
- Motor: 12V DC
- Outrigger Requirements: Jackleg extending minimum 3' 9" from centerline of truck

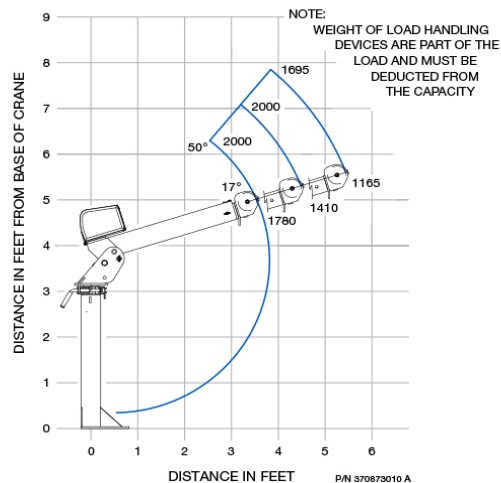


Econo-Ton II/R, 5' Boom

Short Pedestal



Standard Pedestal, 3'



Model	Part Number	Description	List Price
EC-2 Manual	370870010	5' Boom, manual rotation, standard pedestal	\$4,957
EC-2 Manual	370870030	5' Boom, manual rotation, short pedestal	\$4,770
EC-2 Powered	370871010	5' Boom, power rotation, standard pedestal	\$8,122
EC-2 Powered	370871030	5' Boom, power rotation, short pedestal	\$7,848

EC-2 Cranes – 7' Boom

Standard Features

- 10 ft Hard-Wired Control
- Comprehensive 2-year warranty starting at in-service

Options

- Manual rotation or power rotation
- Short pedestal or tall pedestal

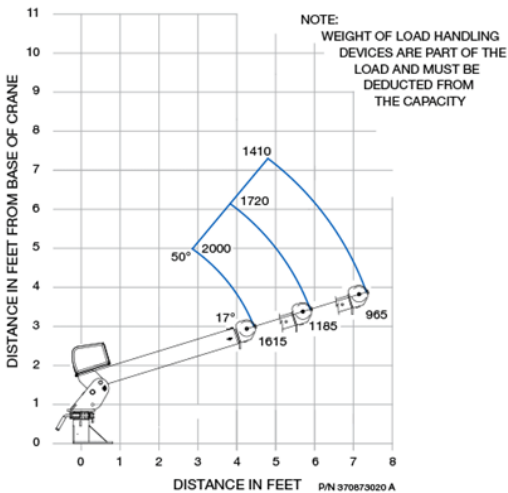
Specifications

- Capacity: 2,000 lb
- Rating: 6,500 ft-lb
- Reach: 7 ft
- Rotation: 325° manual rotation & 355° power rotation
- Cable: 25 ft of 1/4"
- Chassis GVW: 5,200 lb min
- Weight: 280 lbs
- Boom Angle: 17° to 50°
- Hoist Speed: 9 fpm
- Motor: 12V DC
- Outrigger Requirements: Jackleg extending minimum 3' 9" from centerline of truck

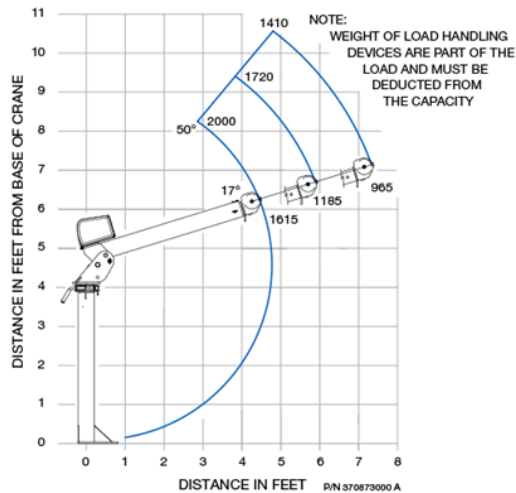


Econo-Ton II/R, 7' Boom

Short Pedestal



Standard Pedestal, 4'



Model	Part Number	Description	List Price
EC-2 Manual	370870000	7' Boom, manual rotation, standard pedestal	\$5,234
EC-2 Manual	370870020	7' Boom, manual rotation, short pedestal	\$4,919
EC-2 Powered	370871000	7' Boom, power rotation, standard pedestal	\$8,376
EC-2 Powered	370871020	7' Boom, power rotation, short pedestal	\$7,997

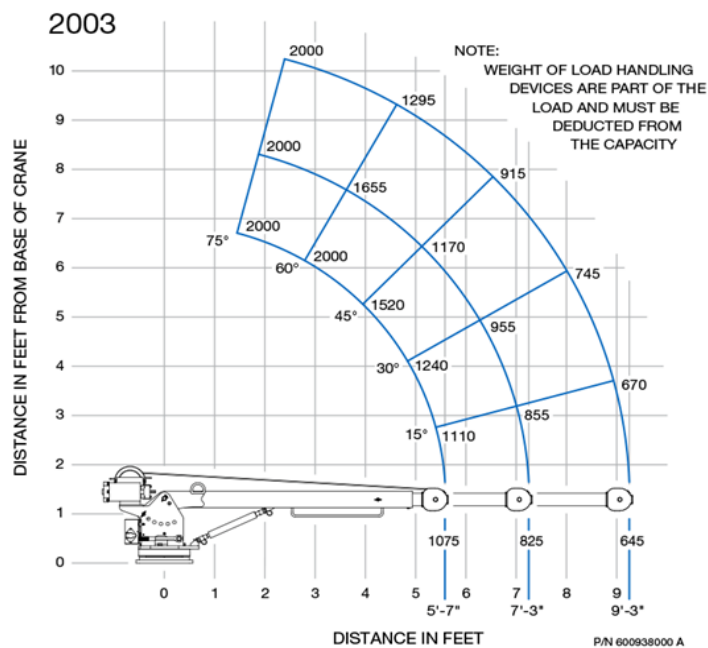
EC-2X Crane

Standard Features

- 15 ft Hard-Wired Control
- 6-position boom elevation
- Comprehensive 2-year warranty starting at in-service

Specifications

- Capacity: 2,000 lb
- Rating: 6,000 ft-lb
- Reach: 9 ft
- Rotation: 360° continuous manual rotation
- Cable: 50 ft of 1/4"
- Chassis GVW: 8,000 lb min
- Weight: 385 lbs
- Boom Angle: 0° to 75°
- Hoist Speed: 30 fpm
- Motor: 12V DC
- Outrigger Requirements: Jackleg extending minimum 3' 3" from centerline of truck



Model	Part Number	Description	List Price
EC-2X	600900000	Manual rotation and extension	\$7,856

EHC-3² Cranes

Standard Features

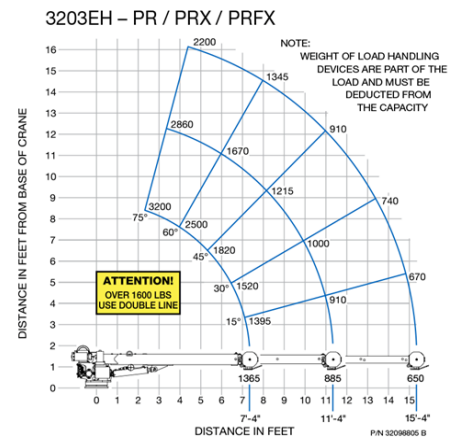
- 100% stability around truck with Titan 16 body and outriggers
- Proportional control for NexStar models
- Meets or exceeds ASME B30.5
- 370° rotation with sealed slewing drive (NexStar)
- Comprehensive 2-year warranty starting at in-service

Options

- NexStar, wireless, or hard-wired control
- Electric or hydraulic hoist
- Hydraulic, Manual-Hydraulic, or Manual extension
- LED boom tip lights

Specifications

- Capacity: 3,200 lb
- Rating: 10,000 ft-lb
- Reach: 15 ft
- Rotation: 360° continuous for hard-wired and wireless
- Cable: 62 ft of 7/32"
- Chassis GVW: 8,800 lb min
- Weight: 690 lbs
- Boom Angle: -5° to 75°
- Hoist Speed: 30 fpm
- Electric Supply: 12V
- Outrigger Requirements: Jackleg extending minimum 3' 9" from centerline of truck



Model	Part Number	Description	List Price
EHC-3² PR Hard-Wired Control	320989003	Manual boom extensions to 15'	\$13,508
EHC-3² PRX Hard-Wired Control	320989002	Hydraulic boom extension to 11', manual extension to 15'	\$14,977
EHC-3² PRFX Hard-Wired Control	320990001	Hydraulic boom extension to 15'	\$16,380
EHC-3² PR Wireless Control	320989005	Manual boom extension to 15', with tether cable	\$15,668
EHC-3² PRX Wireless Control	320989004	Hydraulic boom extension to 11', manual extension to 15', with tether cable	\$16,957
EHC-3² PRFX Wireless Control	320990000	Hydraulic boom extension to 15', with tether cable	\$18,581
EHC-3² PR NexStar 4 Wireless	320992002	Hydraulic Planetary Hoist – Manual boom extension to 15', with tether cable	\$22,013
EHC-3² PRX NexStar 4 Wireless	320992001	Hydraulic Planetary Hoist – Hydraulic boom extension to 11', manual extension to 15', with tether cable	\$24,597
EHC-3² PRFX NexStar 4 Wireless	320992003	Hydraulic Planetary Hoist – Hydraulic boom extension to 15', with tether cable	\$25,904

HC-3² Cranes

Standard Features

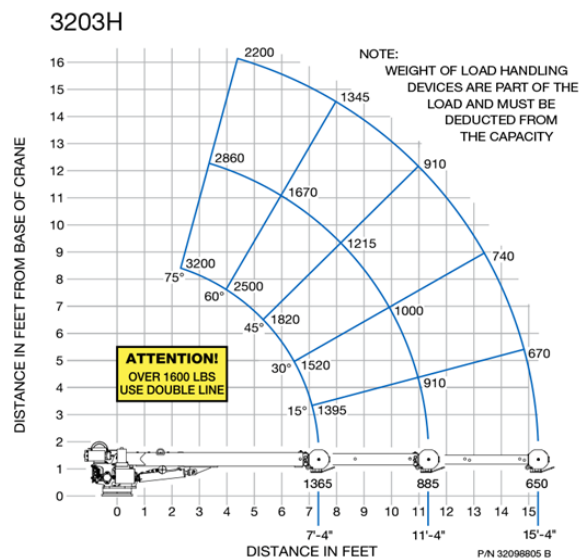
- 100% stability around truck with Titan 16 body and outriggers
- Meets or exceeds ASME B30.5
- Comprehensive 2-year warranty starting at in-service

Options

- Wireless, or hard-wired control

Specifications

- Capacity: 3,200 lb
- Rating: 10,000 ft-lb
- Reach: 15 ft
- Rotation: 370° non-continuous
- Cable: 62 ft of 7/32"
- Chassis GVW: 8,800 lb min
- Weight: 640 lbs
- Boom Angle: -3° to 75°
- Hoist Speed: 27 fpm
- Hydraulic Power: 5 gpm @ 2,200 psi
- Outrigger Requirements: Jackleg extending minimum 3' 9" from centerline of truck



Model	Part Number	Description	List Price
HC-3 ² Hard-Wired Control	320989001	Power extension to 11', manual extension to 15'	\$21,166
HC-3 ² Wireless Control	320989000	Power extension to 11', manual extension to 15', with tether cable	\$21,980

EHC-4 Cranes – 16'



Standard Features

- 100% stability around truck with Titan 16 or Titan 38 body and outriggers
- Proportional control for NexStar models
- Meets or exceeds ASME B30.5
- 370° rotation with sealed slewing drive (NexStar)
- Comprehensive 2-year warranty starting at in-service

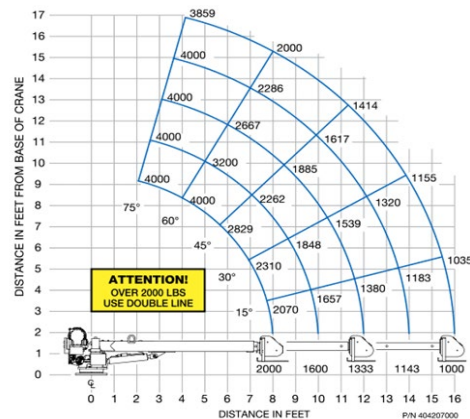
Options

- NexStar, wireless, or hard-wired control
- Electric or hydraulic hoist
- LED boom tip lights

Specifications

- Capacity: 4,000 lb
- Rating: 16,000 ft-lb
- Reach: 16 ft
- Rotation: 360° continuous for hard-wired and wireless models
- Cable: 80 ft of 5/16"
- Chassis GVW: 10,500 lb min
- Weight: 890 lbs
- Boom Angle: -5° to 75°
- Hoist Speed: 30 fpm
- Electric Supply: 12V
- Outrigger Requirements: Truck must be equipped with minimum 16,000 ft-lb rated outriggers

4004EH - 16' Boom



Model	Part Number	Description	List Price
EHC-4 Hard-Wired Control	404181001	Hydraulic boom extension to 12', manual extension to 16'	\$19,263
EHC-4 Wireless Control	404181003	Hydraulic boom extension to 12', manual extension to 16', with tether cable	\$21,903
EHC-4 NexStar 4 Wireless	404242003	Hydraulic boom extension to 12', manual extension to 16', with tether cable	\$27,952

EHC-4 Cranes – 20'



Standard Features

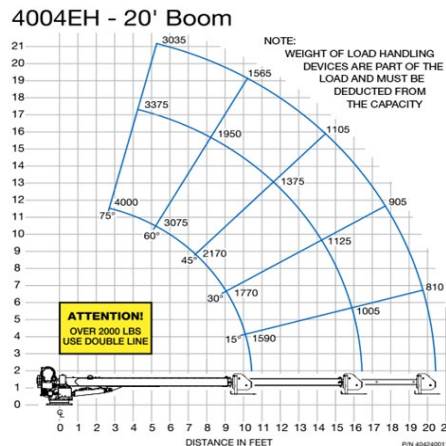
- 100% stability around truck with Titan 16 or Titan 38 body and outriggers
- Proportional control for NexStar models
- Open hook attachment
- Meets or exceeds ASME B30.5
- 370° rotation with sealed slewing drive (NexStar)
- Comprehensive 2-year warranty starting at in-service

Options

- NexStar, wireless, or hard-wired control
- Electric or hydraulic hoist
- LED boom tip lights

Specifications

- Capacity: 4,000 lb
- Rating: 16,000 ft-lb
- Reach: 20 ft
- Rotation: 360° continuous for hard-wired and wireless models
- Cable: 80 ft of 5/16"
- Chassis GVW: 10,500 lb min
- Weight: 890 lbs
- Boom Angle: -5° to 75°
- Hoist Speed: 30 fpm
- Electric Supply: 12V
- Outrigger Requirements: Truck must be equipped with minimum 16,000 ft-lb rated outriggers



Model	Part Number	Description	List Price
EHC-4 Hard-Wired Control	404240020	Hydraulic boom extension to 16', manual extension to 20'	\$20,621
EHC-4 Wireless Control	404240030	Hydraulic boom extension to 16', manual extension to 20', with tether cable	\$23,070
EHC-4 NexStar 4 Wireless	404243003	Hydraulic boom extension to 16', manual extension to 20', with tether cable	\$29,127

EHC-5 Cranes

Standard Features

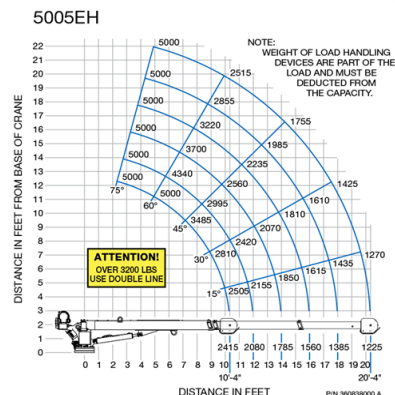
- 100% stability around truck with Titan 38 body and outriggers
- Proportional control for NexStar models
- Meets or exceeds ASME B30.5
- Open hook attachment
- 450° rotation with sealed slewing drive (NexStar)
- Comprehensive 2-year warranty starting at in-service

Options

- NexStar, wireless, or hard-wired control
- LED boom tip lights

Specifications

- Capacity: 5,000 lb
- Rating: 25,000 ft-lb
- Reach: 20 ft
- Cable: 80 ft of 5/16"
- Chassis GVW: 14,500 lb min
- Weight: 1,455 lbs
- Boom Angle: -14° to 75°
- Hoist Speed: 36 fpm
- Electric Supply: 12V
- Outrigger Requirements: Truck must be equipped with minimum 38,000 ft-lb rated outriggers



Model	Part Number	Description	List Price
EHC-5 Hard-Wired Control	360645000	360 degree continuous rotation	\$26,906
EHC-5 Hard-Wired Control	360645001	370 degree non-continuous rotation	\$24,926
EHC-5 Wireless Control	360645002	360 degree continuous rotation, with tether cable	\$29,203
EHC-5 Wireless Control	360645003	370 degree non-continuous rotation, with tether cable	\$27,223
EHC-5 NexStar 4 Wireless	360646003	450 degree non-continuous rotation, with tether cable	\$32,072

HC-5 Crane



Standard Features

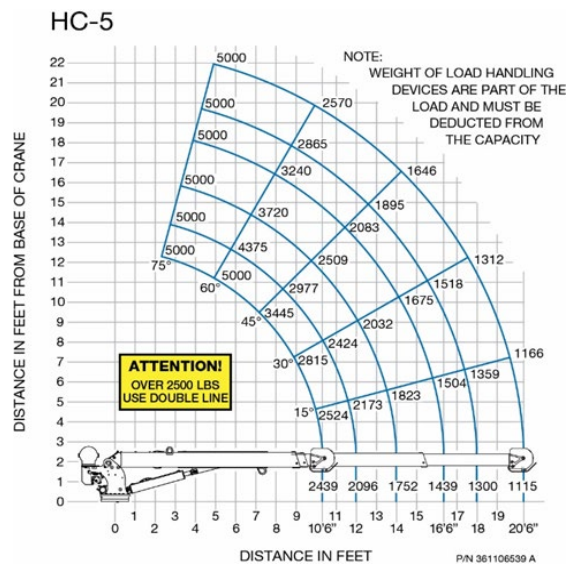
- 100% stability around truck with Titan 38 body and outriggers
- Proportional control for NexStar models
- Meets or exceeds ASME B30.5
- Open hook attachment
- 450° rotation with sealed slewing drive (NexStar)
- Comprehensive 2-year warranty starting at in-service

Options

- LED boom tip lights
- Quick-release personnel basket adapter

Specifications

- Capacity: 5,000 lb
- Rating: 25,000 ft-lb
- Reach: 20 ft
- Cable: 80 ft of 5/16"
- Chassis GVW: 14,500 lb min
- Weight: 1,390 lbs
- Boom Angle: -14° to 75°
- Hoist Speed: 60 fpm
- Hydraulic Power: 8 gpm @ 2,750 psi
- Outrigger Requirements: Truck must be equipped with minimum 38,000 ft-lb rated outriggers



Model	Part Number	Description	List Price
HC-5 NexStar 4 Wireless	361106530	450 degree non-continuous rotation, with tether cable	\$32,445

EHC-6 Cranes



Standard Features

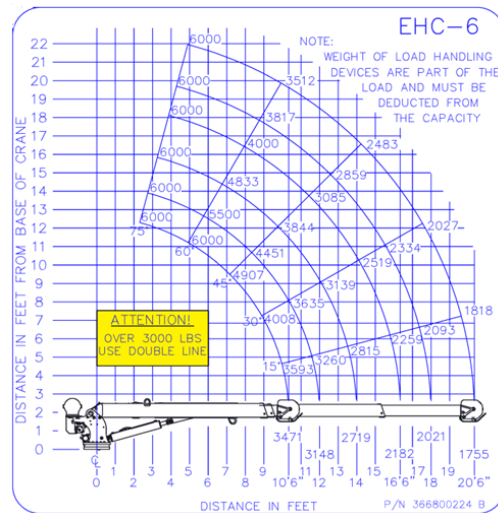
- 100% stability around truck with Titan 38 body and outriggers
- Proportional control for NexStar models
- Meets or exceeds ASME B30.5
- Open hook attachment
- 450° rotation with sealed slewing drive (NexStar)
- Comprehensive 2-year warranty starting at in-service

Options

- NexStar, wireless, or hard-wired control
- LED boom tip lights

Specifications

- Capacity: 6,000 lb
- Rating: 36,000 ft-lb
- Reach: 20 ft
- Cable: 95 ft of 3/8"
- Chassis GVW: 14,500 lb min
- Weight: 1,670 lbs
- Boom Angle: -14° to 75°
- Hoist Speed: 36 fpm
- Electric Supply: 12V
- Outrigger Requirements: Truck must be equipped with minimum 38,000 ft-lb rated outriggers



Model	Part Number	Description	List Price
EHC-6 Hard-Wired Control	366600002	360 degree continuous rotation	\$28,389
EHC-6 Hard-Wired Control	366780002	370 degree non-continuous rotation	\$26,409
EHC-6 Wireless Control	366600003	360 degree continuous rotation, with tether cable	\$30,686
EHC-6 Wireless Control	366790001	370 degree non-continuous rotation	\$28,704
EHC-6 NexStar 4 Wireless	366664003	450 degree non-continuous rotation, with tether cable	\$33,063

HC-6 Cranes



Standard Features

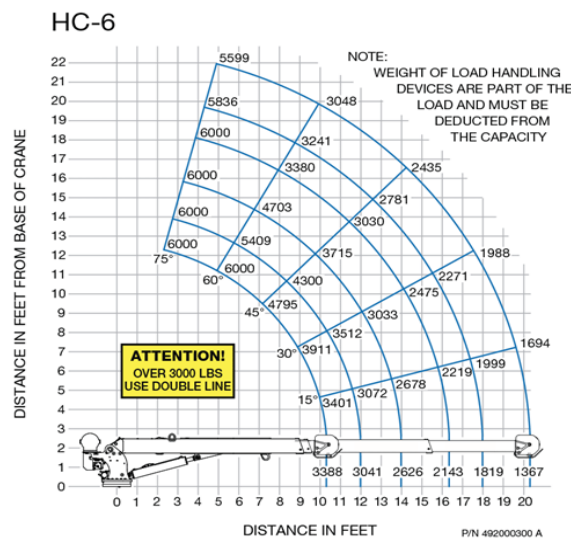
- 100% stability around truck with Titan 38 body and outriggers
- Proportional control for NexStar models
- Meets or exceeds ASME B30.5
- Open hook attachment
- 450° rotation with sealed slewing drive (NexStar)
- Comprehensive 2-year warranty starting at in-service

Options

- NexStar or hard-wired control
- LED boom tip lights
- Quick-release personnel basket adapter

Specifications

- Capacity: 6,000 lb
- Rating: 36,000 ft-lb
- Reach: 20 ft
- Cable: 80 ft of 5/16"
- Chassis GVW: 14,500 lb min
- Weight: 1,670 lbs
- Boom Angle: -14° to 75°
- Hoist Speed: 60 fpm
- Hydraulic Power: 8 gpm @ 2,750 psi
- Outrigger Requirements: Truck must be equipped with minimum 38,000 ft-lb rated outriggers



Model	Part Number	Description	List Price
HC-6 Hard-Wired Control	492000001	370 degree non-continuous rotation	\$26,680
HC-6 NexStar 4 Wireless	492000010	450 degree non-continuous rotation, with tether cable	\$33,171

HC-7 Cranes



Standard Features

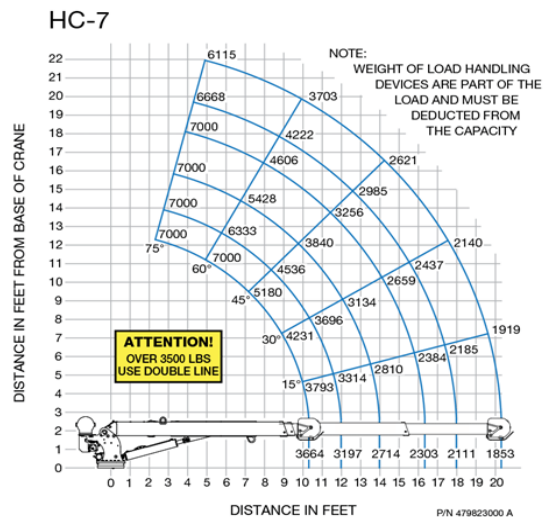
- 100% stability around truck with Titan 38 body and outriggers
- Proportional control for NexStar models
- Meets or exceeds ASME B30.5
- Open hook attachment
- 450° rotation with sealed slewing drive (NexStar)
- Comprehensive 2-year warranty starting at in-service

Options

- NexStar or hard-wired control
- LED boom tip lights
- Personal fall protection
- Quick-release personnel basket adapter

Specifications

- Capacity: 7,000 lb
- Rating: 38,000 ft-lb
- Reach: 20 ft
- Cable: 95 ft of 3/8"
- Chassis GVW: 14,500 lb min
- Weight: 1,705 lbs
- Boom Angle: -14° to 75°
- Hoist Speed: 55 fpm
- Hydraulic Power: 8 gpm @ 2,750 psi
- Outrigger Requirements: Truck must be equipped with minimum 38,000 ft-lb rated outriggers



Model	Part Number	Description	List Price
HC-7 Hard-Wired Control	477000001	370 degree non-continuous rotation	\$26,556
HC-7 NexStar 4 Wireless	477000008	450 degree non-continuous rotation, with tether cable	\$34,208

HC-7x Crane



Standard Features

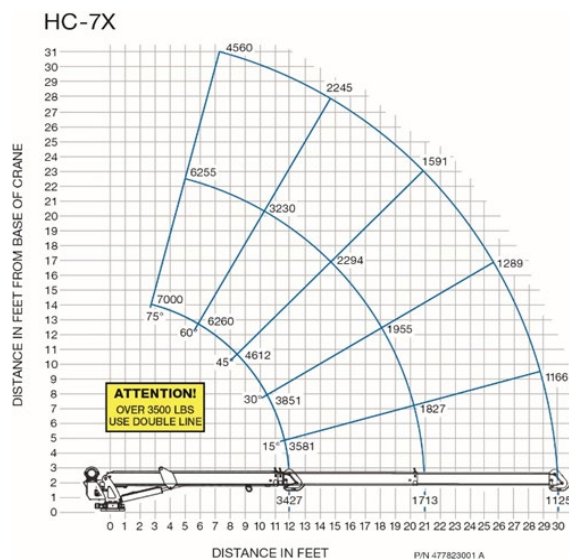
- 100% stability around truck with Titan 38 body and outriggers
- Proportional control for NexStar models
- Meets or exceeds ASME B30.5
- Open hook attachment
- 450° rotation with sealed slewing drive (NexStar)
- Comprehensive 2-year warranty starting at in-service

Options

- LED boom tip lights
- Personal fall protection
- Quick-release personnel basket adapter

Specifications

- Capacity: 7,000 lb
- Rating: 43,000 ft-lb
- Reach: 30 ft
- Cable: 120 ft of 3/8"
- Chassis GVW: 19,500 lb min
- Weight: 1,865 lbs
- Boom Angle: -12° to 75°
- Hoist Speed: 55 fpm
- Hydraulic Power: 8 gpm @ 2,750 psi
- Outrigger Requirements: Truck must be equipped with minimum 43,000 ft-lb rated outriggers



Model	Part Number	Description	List Price
HC-7x NexStar 4 Wireless	477000003	450 degree non-continuous rotation, with tether cable	\$37,132

HC-8 Crane



Standard Features

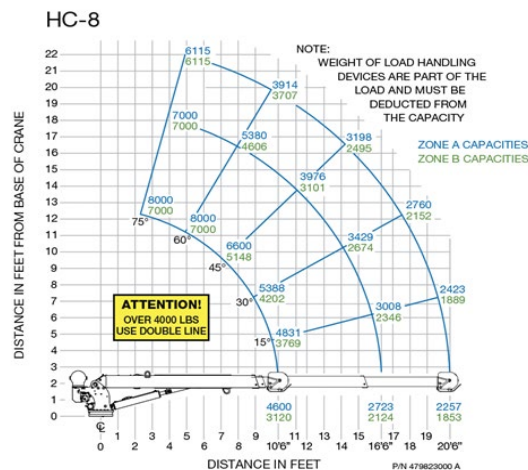
- 100% stability around truck with Titan 38 body and outriggers
- Proportional control for NexStar models
- Meets or exceeds ASME B30.5
- Open hook attachment
- 450° rotation with sealed slewing drive (NexStar)
- Comprehensive 2-year warranty starting at in-service

Options

- LED boom tip lights
- Personal fall protection
- Quick-release personnel basket adapter

Specifications

- Capacity: 8,000 lb
- Rating: 49,000 ft-lb
- Reach: 20 ft
- Cable: 95 ft of 3/8"
- Chassis GVW: 19,500 lb min
- Weight: 1,705 lbs
- Boom Angle: -14° to 75°
- Hoist Speed: 55 fpm
- Hydraulic Power: 8 gpm @ 2,750 psi
- Outrigger Requirements: Truck must be equipped with minimum 49,000 ft-lb rated outriggers



Model	Part Number	Description	List Price
HC-8 NexStar 4 Wireless Control	479000012	450 degree non-continuous rotation, with tether cable	\$35,297

HC-8x Crane



Standard Features

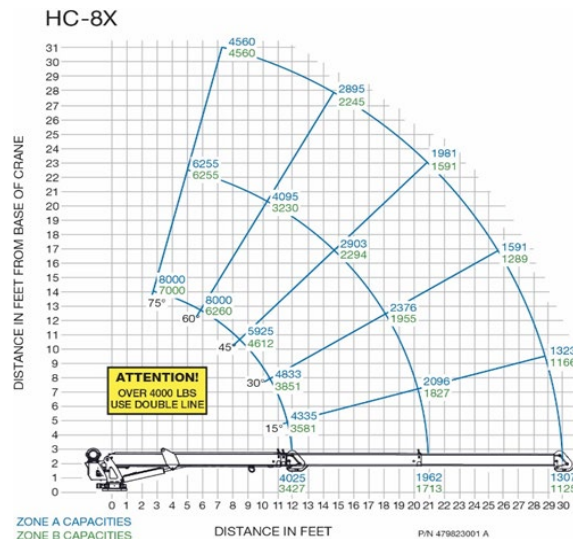
- 100% stability around truck with Titan 38 body and outriggers
- Proportional control for NexStar models
- Meets or exceeds ASME B30.5
- Open hook attachment
- 450° rotation with sealed slewing drive (NexStar)
- Comprehensive 2-year warranty starting at in-service

Options

- LED boom tip lights
- Personal fall protection
- Quick-release personnel basket adapter

Specifications

- Capacity: 8,000 lb
- Rating: 52,000 ft-lb
- Reach: 30 ft
- Cable: 120 ft of 3/8"
- Chassis GVW: 19,500 lb min
- Weight: 1,870 lbs
- Boom Angle: -12° to 75°
- Hoist Speed: 55 fpm
- Hydraulic Power: 8 gpm @ 2,750 psi
- Outrigger Requirements: Truck must be equipped with minimum 52,000 ft-lb rated outriggers



Model	Part Number	Description	List Price
HC-8x NexStar 4 Wireless	479000011	450 degree non-continuous rotation, with tether cable	\$38,719

8406H Cranes



Standard Features

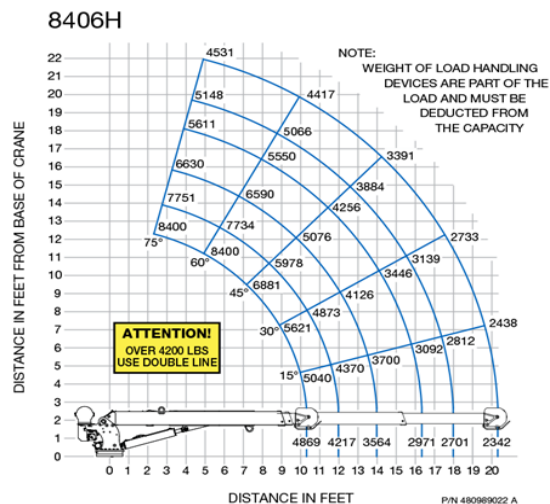
- 100% stability around truck with Titan 50 body and outriggers
- Proportional control for NexStar models
- Meets or exceeds ASME B30.5
- Open hook attachment
- 450° rotation with sealed slewing drive (NexStar)
- Comprehensive 2-year warranty starting at in-service

Options

- NexStar or hard-wired control
- LED boom tip lights
- Personal fall protection
- Quick-release personnel basket adapter

Specifications

- Capacity: 8,400 lb
- Rating: 50,000 ft-lb
- Reach: 20 ft
- Cable: 95 ft of 3/8"
- Chassis GVW: 20,500 lb min
- Weight: 1,755 lbs
- Boom Angle: -14° to 75°
- Hoist Speed: 60 fpm
- Hydraulic Power: 13 gpm @ 2,750 psi
- Outrigger Requirements: Truck must be equipped with minimum 50,000 ft-lb rated outriggers



Model	Part Number	Description	List Price
8406H NexStar 4 Wireless	480989008	450 degree non-continuous rotation, with tether cable	\$33,642

HC-10 Crane



Standard Features

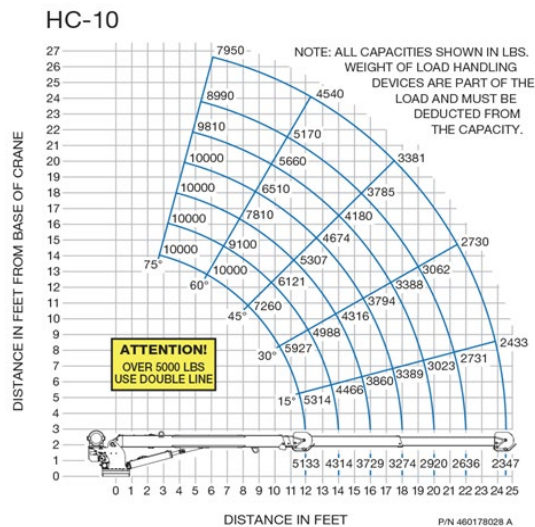
- 100% stability around truck with Titan 60 body and outriggers
- Proportional control for NexStar models
- Meets or exceeds ASME B30.5
- Open hook attachment
- 450° rotation with sealed slewing drive (NexStar)
- Comprehensive 2-year warranty starting at in-service

Options

- LED boom tip lights
- Personal fall protection
- Quick-release personnel basket adapter

Specifications

- Capacity: 10,000 lb
- Rating: 60,000 ft-lb
- Reach: 25 ft
- Cable: 120 ft of 7/16"
- Chassis GVW: 26,000 lb min
- Weight: 1,900 lbs
- Boom Angle: -12° to 75°
- Hoist Speed: 60 fpm
- Hydraulic Power: 10 gpm @ 3,000 psi
- Outrigger Requirements: Truck must be equipped with minimum 60,000 ft-lb rated outriggers



Model	Part Number	Description	List Price
HC-10 NexStar 4 Wireless Control	460179005	450 degree non-continuous rotation, with tether cable	\$39,251

HC-12s Crane



Standard Features

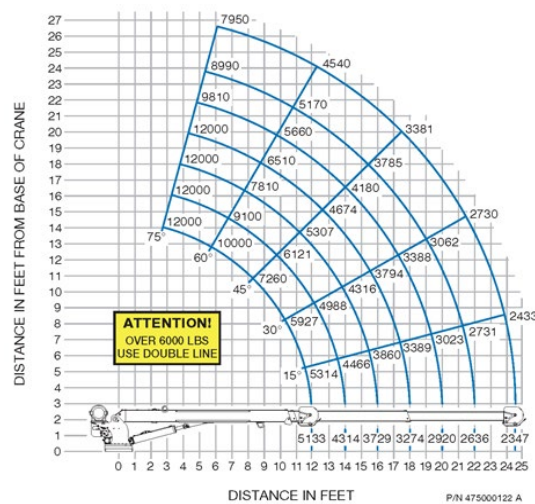
- 100% stability around truck with Titan 60 body and outriggers
- Proportional control for NexStar models
- Meets or exceeds ASME B30.5
- Open hook attachment
- 450° rotation with sealed slewing drive (NexStar)
- Comprehensive 2-year warranty starting at in-service

Options

- LED boom tip lights
- Personal fall protection
- Quick-release personnel basket adapter

Specifications

- Capacity: 12,000 lb
- Rating: 60,000 ft-lb
- Reach: 25 ft
- Cable: 120 ft of 7/16"
- Chassis GVW: 26,000 lb min
- Weight: 1,900 lbs
- Boom Angle: -12° to 75°
- Hoist Speed: 60 fpm
- Hydraulic Power: 10 gpm @ 3,000 psi
- Outrigger Requirements: Truck must be equipped with minimum 60,000 ft-lb rated outriggers



Model	Part Number	Description	List Price
HC-12s NexStar 4 Wireless Control	475000012	450 degree non-continuous rotation, with tether cable	\$40,227

HC-12 Crane



Standard Features

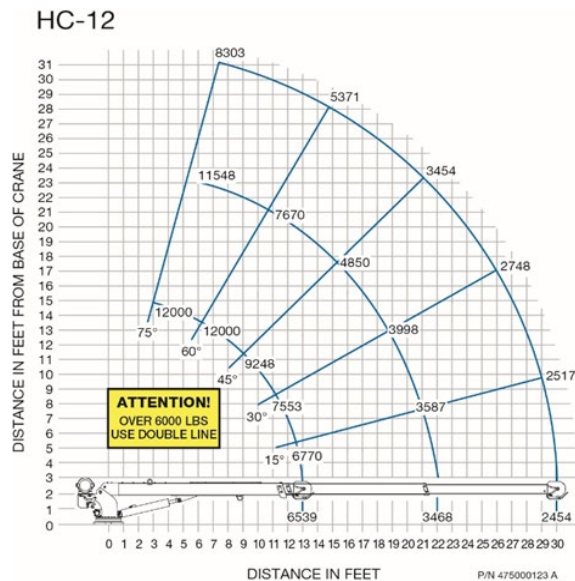
- 100% stability around truck with Titan 85 body and outriggers
- Proportional control for NexStar models
- Meets or exceeds ASME B30.5
- Open hook attachment
- 450° rotation with sealed slewing drive (NexStar)
- Comprehensive 2-year warranty starting at in-service

Options

- LED boom tip lights
- Jib
- Personal fall protection
- Quick-release personnel basket adapter

Specifications

- Capacity: 12,000 lb
- Rating: 85,000 ft-lb
- Reach: 30 ft
- Cable: 120 ft of 7/16"
- Chassis GVW: 29,000 lb min
- Weight: 3,140 lbs
- Boom Angle: -12° to 75°
- Hoist Speed: 60 fpm
- Hydraulic Power: 10 gpm @ 3,000 psi
- Outrigger Requirements: Truck must be equipped with minimum 85,000 ft-lb rated outriggers



Model	Part Number	Description	List Price
HC-12 NexStar 4 Wireless Control	475000014	450 degree non-continuous rotation, with tether cable	\$46,560

HC-14 Crane



Standard Features

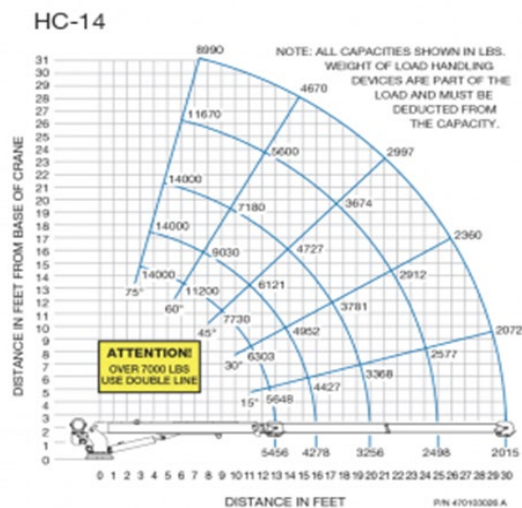
- 100% stability around truck with Titan 85 body and outriggers
- Proportional control for NexStar models
- Meets or exceeds ASME B30.5
- Open hook attachment
- 450° rotation with sealed slewing drive (NexStar)
- Comprehensive 2-year warranty starting at in-service

Options

- LED boom tip lights
- Jib
- Personal fall protection
- Quick-release personnel basket adapter

Specifications

- Capacity: 14,000 lb
- Rating: 85,000 ft-lb
- Reach: 30 ft
- Cable: 120 ft of 1/2"
- Chassis GVW: 29,000 lb min
- Weight: 3,200 lbs
- Boom Angle: -12° to 75°
- Hoist Speed: 60 fpm
- Hydraulic Power: 15 gpm @ 2,800 psi
- Outrigger Requirements: Truck must be equipped with minimum 85,000 ft-lb rated outriggers



Model	Part Number	Description	List Price
HC-14 NexStar 4 Wireless	470103006	450 degree non-continuous rotation, with tether cable	\$49,051

Crane Accessories

Boom Tip Lights			
Part Number	Description	List Price	Installed
475300089	Boom Tip Light, 1 light, for Models EHC-3 & EHC-4	\$402	
475300090	Boom Tip Light, 1 light, for Models EHC-3 & EHC-4 Installed (Includes Above Part Number)		\$486
475300075	Boom Tip Lights, 2 lights, for Models EHC-3 & EHC-4	\$701	
475300076	Boom Tip Lights, 2 lights, for Models EHC-3 & EHC-4 Installed (Includes Above Part Number)		\$791
475300084	Boom Tip Light, 1 light, for Models EHC-5, HC-5, HC-6	\$403	
475300085	Boom Tip Light, 1 light, for Models EHC-5, HC-5, HC-6 Installed (Includes Above Part Number)		\$484
475300071	Boom Tip Lights, 2 lights, for Models EHC-5, HC-5, HC-6	\$704	
475300072	Boom Tip Lights, 2 lights, for Models EHC-5, HC-5, HC-6 Installed (Includes Above Part Number)		\$783
475300082	Boom Tip Light, 1 light, for Models EHC-6, HC-7, HC-8, HC-9 - HC-12	\$405	
475300083	Boom Tip Light, 1 light, for Models EHC-6, HC-7, HC-8, HC-9 - HC-12 Installed (Includes Above Part Number)		\$483
475300065	Boom Tip Lights, 2 lights, for Models EHC-6, HC-7 - HC-12	\$704	
475300070	Boom Tip Lights, 2 lights, for Models EHC-6, HC-7, HC-8, HC-9 - HC-12 Installed (Includes Above Part Number)		\$783
475300087	Boom Tip Light, 1 light, for Models HC-7x & HC-8X	\$404	
475300088	Boom Tip Light, 1 light, for Models HC-7x & HC-8X Installed (Includes Above Part Number)		\$481
475300060	Boom Tip Lights, 2 lights, for Models HC-7x & HC-8X Installed (Includes 475300065 Part Number)		\$786
475300080	Boom Tip Light, 1 light, for Model HC-14	\$404	
475300081	Boom Tip Light, 1 light, for Model HC-14 Installed (Includes Above Part Number)		\$482
475300068	Boom Tip Lights, 2 lights, for Model HC-14	\$704	
475300069	Boom Tip Lights, 2 lights, for Model HC-14 Installed (Includes Above Part Number)		\$783

NexStar 4 Remote Reminder Chime Kit			
Part Number	Description	List Price	Installed
366823460	NexStar Remote Reminder Chime Kit	\$206	
366823461	NexStar Remote Reminder Chime Kit, Installed (Includes Above Part Number) (Factory upfit only)		\$520
366823477	NexStar Remote Reminder Chime Kit, Installed (use with Titan Connect)		\$221

Accessories			
Part Number	Description	List Price	Installed
560195015	Boom Support (EHC-5 – HC-14 cranes)	\$684	
715064020	Boom Support (EHC-3.2 & EHC-4 cranes)	\$438	
738493225	Outrigger Pad, 18" x 18"x1" (45,000 lbs. vertical, 11 lbs. weight rating in psi for all cranes)	\$189	
460179250	Custom Paint for Crane	\$804	

Crane Accessories

Outriggers & Jacklegs			
Part Number	Description	List Price	Installed
700320000	Detachable Jackleg (14" long) *	\$190	
700343000	Medium Duty Screw Base Detachable Jackleg (16" long) *	\$279	
700347000	Medium Duty Screw Base Detachable Jackleg (20" long) *	\$329	
700351000	Medium Duty Screw Base Detachable Jackleg (24" long) *	\$352	
700354000	Medium Duty Screw Base Detachable Jackleg (27" long) *	\$426	
200745000	Heavy-Duty Quick Detachable Jackleg (20" long) *	\$513	
320980001	Manual Out; Up/Down Outriggers (16,000 ft-lb) 4004 Model or Smaller Crane (for single rear wheel vehicle)	\$1,406	
320980000	Manual Out; Up/Down Outriggers (16,000 ft-lb) 4004 Model or Smaller crane (for dual rear wheel vehicle)	\$1,446	
738896000	Full Manual Outrigger Assembly (38,000 ft-lb) Right Side Crane (for use with HC-7 or smaller crane)	\$3,088	
738843000	Manual I/O - Hydraulic U/D - Outrigger Assembly (38,000 ft-lb) Right Side Crane (for use with HC-7 or smaller crane)	\$7,477	
738493000	Full Hydraulic Outrigger Assembly (52,000 ft-lb) Right Side Crane (for use with HC-8 or smaller crane - required when mounting an HC-8 crane to a Titan 38 body)	\$7,547	
560570100	Hydraulic In/Out, Up/Down Outriggers (50,000 ft-lb) Right Side Crane (for 8406H crane or equivalent)	\$8,730	
560142000	Manual In/Out, Up/Down Outriggers (50,000 ft-lb) Right Side Crane (for 8406H crane or equivalent)	\$3,646	
560570101	Full hydraulic outriggers, single slide - Right Side Crane (use 24" or 30" bumper designed for single slide outrigger) (Titan 60 body - 60,000 ft-lb)**	\$8,904	
772020001	Hydraulic In/Out, Up/Down Outriggers (85,000 ft-lb) Right Side Crane (for Titan 60 & 85 body)	\$11,232	

* Jacklegs do not provide 360-degree stability for cranes of 10,000 ft. lbs.

** The single slide outriggers have less than 100% capacity on truck sides to maintain stability

Call the factory for quotes on left side crane outriggers and accessories.

NexStar 4

<https://autocrane.us/nexstar-next-gen/>



Rugged Remote

- Field-proven ruggedness and lighter weight
 - Even lighter by as much as 70% of the weight of competitor pistol grip remotes
- Better ergonomics for one-hand operation alleviating fatigue
- Rechargeable Li-ion battery
 - 12 hours of use
- Larger color LCD with simplified interface
 - A bar graph quickly tells you how much capacity remains before an overload occurs
 - The message area tells you the status of the crane in plain text
 - Intuitive symbols make the the values stand out
- Lower cost repair and faster service
- Docking station quickly charges the remote and doubles as a missing remote indicator
 - Operators are reminded when they've left the remote at the job site or on the back of the truck

Field Tested

- Field testing has proven the new remote is far more rugged

Automated Deploy and Stow

AutoDeploy™

- AutoDeploy brings the crane out of the rest and rotates the boom around to the right side of the truck and then releases the hook with traveling block.

AutoStow™

- Retract the crane and set the traveling block hook on the attachment, then run AutoStow to park the crane.

Remote Troubleshooting (Optional Bluetooth modem required)

- Part number for Bluetooth modem is 366823468 (List price \$528)
- Diagnose problems before arriving with mobile service
- Change settings and tuning parameters
- Update software remotely without special tool or trip

Fleet Management (Optional capability)

- Improved data logging is focused on the metrics that fleet managers want to see:
- Crane utilization
- Incident recording ("black box" type recording of several incidents)

Crane Specs

Power	Model	Max Lift Capacity (lb)	Moment Rating (ft-lb)	Max Reach	Weight (lbs)	Control Types Available	Hoist Type	Configurations	Titan Body	Minimum GVWR (lbs)
Electric	EC-2	2,000	6,500	5 ft 0 in 7 ft 1 in	230 255	Non-Proportional, Hard-Wired	Electric	Tall / Short Pedestal	Titan 16	5,200
	EC-2x	2,000	6,000	9 ft 3 in	346	Non-Proportional, Hard-Wired	Electric/Worm			8,000
Electric-Hydraulic	EHC-3 ²	3,200	10,000	15 ft 4 in	690	NexStar™ Independent Proportional, Wireless	Hydraulic/Planetary	Boom: Fully Manual/Mid-Hydraulic/Fully Hydraulic Extension	Titan 16	10,500
						Non-Proportional, Wireless (Tether Option) or Hard-Wired	Electric/Worm	Rotation: Continuous		8,800
	EHC-4	4,000	16,000	16 ft 0 in 20 ft 4 in	920 1,055	NexStar™ Independent Proportional, Wireless	Hydraulic/Planetary	Boom: Hydraulic-Manual Extension		10,500
						Non-Proportional, Wireless (Tether Option) or Hard-Wired	Electric/Worm	Rotation: Continuous		10,500
	EHC-5	5,000	25,000	20 ft 4 in	1,470	Non-Proportional, Wireless (Tether Option) or Hard-Wired	Electric/Worm	Boom: Hydraulic Extension Rotation: Continuous or Non-continuous	Titan 38	14,500
	EHC-6	6,000	36,000	20 ft 4 in	1,670	NexStar™ Independent Proportional, Wireless	Electric/Worm	Rotation: Non-continuous		14,500
						Non-Proportional, Hard-Wired		Rotation: Continuous or Non-continuous		
Hydraulic	HC-3 ²	3,200	10,000	15 ft 4 in	640	Proportional, Wireless (Tether Option) or Hard-Wired	Hydraulic/Worm	Boom: Hydraulic-Manual Extension	Titan 16	8,800
	HC-5	5,000	25,000	20 ft 4 in	1,390	NexStar™ Independent Proportional, Wireless/Tethered Proportional, Hard-Wired	Hydraulic/Planetary	Boom: Hydraulic Extension	Titan 38	14,500
	HC-6	6,000	35,000	20 ft 4 in	1,390					
	HC-7	7,000	38,000	20 ft 6 in	1,705					
	HC-7x	7,000	43,000	30 ft 2 in	1,850					
	HC-8	8,000	49,000	20 ft 6 in	1,705				Titan 38	19,500
		7,000	38,000	20 ft 6 in	1,705					
	HC-8x	8,000	53,000	30 ft 2 in	1,867				Titan 60	26,000
		7,000	43,000	30 ft 2 in	1,867					
	HC-9	9,000	59,000	20 ft 6 in	1,715					
	HC-10	10,000	60,000	25 ft 4 in	1,940					
	HC-12s	12,000	60,000	25 ft 4 in	2,023				Titan 85	33,000
	HC-12	12,000	85,000	30 ft 0 in	3,040					
	HC-14	14,000	70,000	30 ft 0 in	3,200					

Personnel Basket

<https://autocrane.us/product-category/accessories/personnel-baskets/>

Personnel Basket			
Part Number	Description	List Price	Installed List Price
605001000	Personnel basket assembly, folding, aluminum, 350 lbs. capacity	\$16,889	

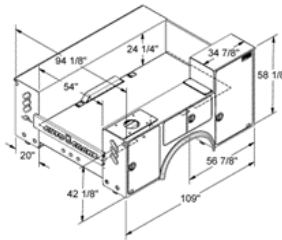
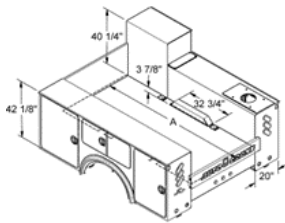
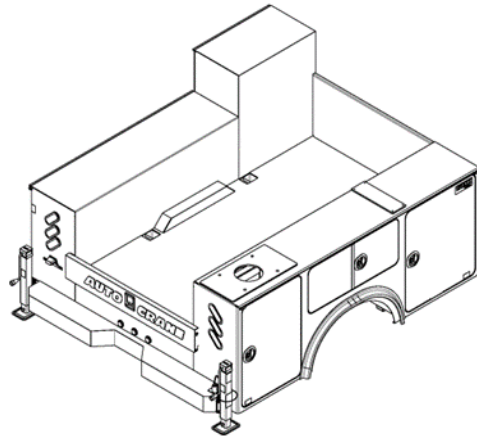
Adapter Kits			
Part Number	Description	List Price	Installed List Price
605001204	Crown adapter kit for personnel basket, HC-5 and HC-6	\$1,198	
605001179	Crown adapter kit for personnel basket, HC-7 thru HC-12s	\$1,198	
605001213	Crown adapter kit for personnel basket, HC-7x and HC-8x	\$1,410	
605001221	Crown adapter kit for personnel basket, HC-12	\$1,519	
605001222	Crown adapter kit for personnel basket, HC-14	\$1,519	

Storage			
Part Number	Description	List Price	Installed List Price
605001180	Storage kit, vertical, for folding personnel basket	\$993	
605001260	Install storage kit (Add to part number above)		Add \$485

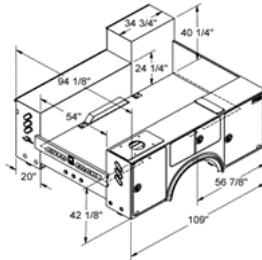
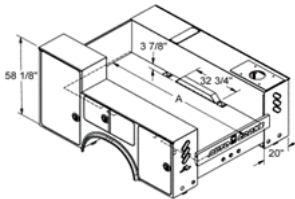


Titan 16 - 9' Body (60" Cab-to-Axle)

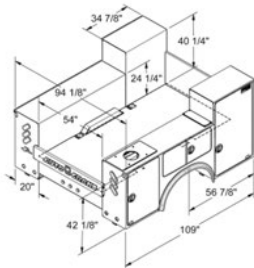
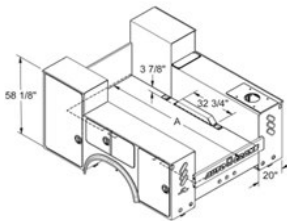
- 10,900 GVWR
- One-piece 10 gauge side-pack design
- Three angled oval lights on the rear of the body
- Integral crane reinforcement up to 16,000 ft. lbs.
- For cranes up to EHC-4
- Flush door panels with bulb seal gasket
- Three-point latching system
- Rugged, durable interlocking channel frame
- Rounded door corners
- Shelf kit is standard – (2) in each front compartment and (1) in each horizontal compartment



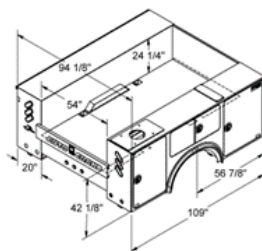
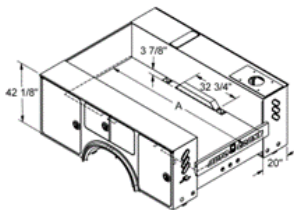
Part Number	Description	List Price
715320001	Titan 16-9' – RS Tall – RS Crane	\$20,193



Part Number	Description	List Price
715320002	Titan 16-9' – LS Tall – RS Crane	\$20,309



Part Number	Description	List Price
715320003	Titan 16-9' – LS/RS Tall – RS Crane	\$20,415



Part Number	Description	List Price
715320004	Titan 16-9' – Standard – RS Crane	\$20,087

Length for "A" Dimension – Standard Bulkhead 107 5/8" – Recessed Bulkhead 99"

* Call Factory for quotes on left side crane bodies and accessories.

Titan 16 - 9' Body Accessories

Bodies

Bulkheads (Choose one with order)			
Part Number	Description	List Price	Installed List Price
715306010	Standard bulkhead (flush with the front of the body)		\$326
715306011	Recessed bulkhead (recessed back from the front of the body)		\$326

Additional Shelving			
Part Number	Description	List Price	Installed List Price
715070001	Shelf kit for rear compartment opposite crane box (2) shelves	\$344	
715078000	Single shelf for front compartment	\$198	
716868000	Install single shelf and shelf strips (Add to part number above)		Add \$111
715070100	Shelving kit, 2 shelves, installed for crane compartment		\$473

Toolboxes			
Part Number	Description	List Price	Installed List Price
715160100	Front compartment – Aluminum Toolbox (1) 7", (2) 5", (4) 3"	\$2,476	
715160101	Front compartment – Aluminum Toolbox (1) 7", (2) 5", (5) 3"	\$2,730	
715160300	Horizontal compartment – Aluminum Toolbox (4) 3"	\$1,521	
715160301	Horizontal compartment – Aluminum Toolbox (3) 3"	\$1,220	
715160400	Rear compartment – Aluminum Toolbox (1) 7", (2) 5", (4) 3"	\$2,017	
716862000	Install toolbox (Add to part number above for each toolbox)		Add \$398

Oxygen/Acetylene Compartment Options			
Part Number	Description	List Price	Installed List Price
736233000	Three oxygen/acetylene bottle holders with hose holder (for standard or tall compartment)		\$602
560483100	Oxy divider / shelving package for front compartment (fits 58" tall front compartment)		\$1,396
715136000	Drop-Well Assembly (2" Deep)		\$496

Interior Lighting Options			
https://autocrane.us/product-category/accessories/lights/			
Part Number	Description	List Price	Installed List Price
475300151	LED interior compartment lighting, Right Side Crane	\$661	
716869000	Install compartment lighting (Add to part number above)		Add \$961

Grab Handle			
Part Number	Description	List Price	Installed List Price
758025000	Grab handle (1)		\$160

Titan 16 - 9' Body Accessories

Bodies

Bumper / Outriggers			
Part Number	Description	List Price	Installed List Price
715321030	Shipping tube, to be ordered when outriggers are not installed		N/C
715100000	Manual outriggers with standard 8" bumper – Right Side Crane	\$2,097	
715150000	Manual outriggers with standard 12" bumper – Right Side Crane	\$2,002	
715158000	Manual outrigger with 20" workbench bumper – Right Side Crane	\$3,868	
716857000	Install bumper/outrigger (Add to part number above)		Add \$344

Receiver Hitch			
Part Number	Description	List Price	Installed List Price
715135000	Receiver hitch (for 8" and 12" bumpers) - Ford	\$690	
715135011	Receiver hitch (for 8" and 12" bumpers) - Chevrolet or Ram	\$689	
716874000	Install receiver hitch for upfit at factory only for 715135000 hitch (Add to part number above)		Add \$259
738850126	Receiver hitch (for 715158000, 20" bumper)		\$1,156

Trailer Plugs			
Part Number	Description	List Price	Installed List Price
739167000	Trailer socket – heavy duty with round pins (SAE J560)	\$39.50	
739167005	Trailer wiring socket – 7 way spade	\$32.75	
716861400	Install trailer plug (Add to part number above)		Add \$430

Paint			
https://autocrane.us/product-category/accessories/coatings/			
Part Number	Description	List Price	Installed List Price
750631000	(Auto Crane White) Painted on the outside and inside of the body		\$2,625
716881010	(Auto Crane White) Painted on the outside of the body and multicolor coating on the inside of the compartments		\$3,096
716863000	(Auto Crane White) painted inside compartments only		\$934
716881020	Coating, multicolor - inside compartments only		\$1,493
900500000	Custom Paint		\$3,636

Titan Armor (In place of Paint)			
https://autocrane.us/product/titan-armor/			
Part Number	Description	List Price	Installed List Price
750631012	Titan Armor, white on the outside, multicolor on the inside		\$6,302
750631010	Titan Armor, custom paint on the outside, multicolor on the inside		\$7,623

Titan 16 - 9' Body Accessories

Bodies

Bedliner			
https://autocrane.us/product-category/accessories/coatings/			
Part Number	Description	List Price	Installed List Price
717510001	Bedliner - Floor and Sides Only		\$1,605
717510003	Bedliner - Floor, Sides and Compartment Tops		\$1,956
717510005	Bedliner - Workbench bumper		\$630
717510006	Arctic Package (rock guard coating for paint protection)		\$1,498
717510008	Bedliner - Front of Body		\$840

Boom Support			
Part Number	Description	List Price	Installed List Price
715064020	Boom support (EHC-3.2 & EHC-4 cranes)	\$438	
716858000	Install boom support (Add to part number above)		Add \$159

Light Bars & Headache Racks			
Part Number	Description	List Price	Installed List Price
739317875	Light bar - Titan 16 – left side standard, right side tall		\$929
715309560	Headache rack - Titan 16 – left side standard, right side tall		\$2,067

Work Light Options			
Part Number	Description	List Price	Installed List Price
475300034	LED Floodlight, square, 1600 lumens	\$110	
716861000	Install work lights (Add to part number above)		Add \$213

Underbody Lighting			
Part Number	Description	List Price	Installed List Price
475300425	Underbody Lighting , Kit, 9' Bodies		\$1,158

Compartment Hook Options			
Part Number	Description	List Price	Installed List Price
750613000	Oxygen / acetylene hook assembly		\$46.50
750614000	J-hook		\$21.25
750807000	Chain hook assembly		\$86.50
753241000	Swivel J-hook		\$40

Titan 16 - 9' Body Accessories

Bodies

Master Locking Systems			
Part Number	Description	List Price	Installed List Price
715309105	Master lock system stainless/steel – Standard body		\$1,369
715309106	Master lock system stainless/steel – RS Tall body		\$1,376
715309107	Master lock system stainless/steel – LS Tall body		\$1,376
715309108	Master lock system stainless/steel – LS/RS Tall body		\$1,360

Titan Trax Struts (Full length mounting struts)			
Part Number	Description	List Price	Installed List Price
715330029	Titan Trax, Titan 16, 9', raised front compartment, one side, opposite crane box		\$446
Call Factory	Titan Trax, Titan 16, 9', same height length of body, one side, opposite crane box		\$446
715330021	Blank plate mounting kit, Titan 16		\$484
715330025	Blank plate, hose reel mounting kit, Titan 16		\$190
739185109	Mounting plate, Vanair Pro 35, Titan 16		\$537

Fuel & Fuel/DEF Cut-Outs			
Part Number	Description	List Price	Installed List Price
715320020	Fuel / DEF filler cut-outs (2 cut-outs)		\$357
715320021	Fuel cut-out RAM (1 cut-out)		\$191
715320022	Fuel cut-out only, Ford Chassis (1 cut-out)		\$197
715320026	Fuel cut-out only, Chevy Chassis (1 cut-out)		\$197

Body Installation Kits			
Part Number	Description	List Price	Installed
560579000	Body installation kit (for Ford F-350, F-450, and F-550 chassis)	\$587	
560579002	Body installation kit (for 2021 to present diesel Ford chassis)	\$961	
560579100	Body installation kit (for RAM chassis)	\$584	
560581000	Body installation kit (for International/Chevy chassis)	\$212	

Body Installation Charge			
Part Number	Description	List Price	Installed List Price
716851000	Install body on Class 5 and below chassis, includes mud flaps (Add to body part number if upfit at factory)		\$5,552

Crane Installation Charges

Part Number	Description	List Price	Installed List Price
750678000	Install EC-2X, EHC-3.2 & EHC-4 crane (Add to crane part number if upfit at factory)		\$936
750679000	Install hydraulic crane (Add to crane part number if upfit at factory)		\$1,433

Equipment

Part Number	Description	List Price	Installed List Price
750831000	ICC safety kit (Complies with FMVH Safety Standard No. 125, Sec. 571.125)	\$90.75	
750061000	Fire extinguisher (Complies with FMCS Regs. Sec. 393.95 – classification 2 – A:10-B:C unit)	\$174	
750681000	Backup safety alarm		\$330

PTO (For Factory Installs Only)

Part Number	Description	List Price	Installed List Price
736997000	PTO and installation for an automatic transmission		\$5,128
736998000	PTO and installation for a manual transmission		\$4,150

Spring Reinforcement (For Factory Installs Only)

Part Number	Description	List Price	Installed List Price
736995001	Spring reinforcement		\$2,321

Hydraulic Reservoirs

Part Number	Description	List Price	Installed List Price
480420100	15-gallon reservoir with return filter, sight gauge, and suction strainer	\$671	
751095070	36-gallon bulkhead reservoir to fit inside 50" wide cargo area with return filter and sight gauge	\$1,444	
340169400	Oil Cooler Kit (for use when oil temperature exceeds 180°, or application prevents install of recommended 2x total GPM tank capacity, or crane and/or compressor is operated in continuous duty applications)	\$2,970	

Titan 16 - 9' Body Accessories

Bodies

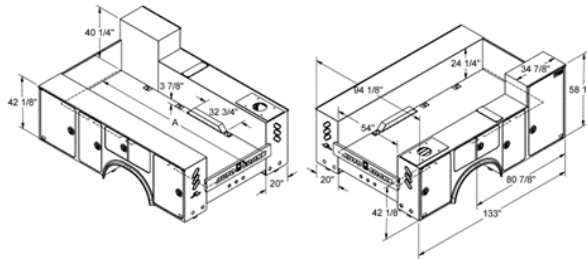
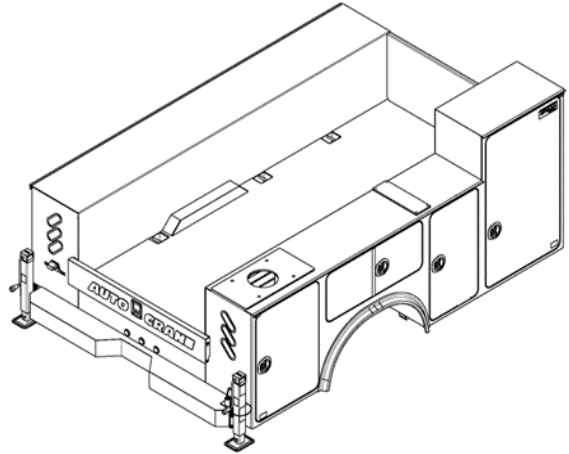
Hydraulic Installation Kits			
Part Number	Description	List Price	Installed List Price
367223200	Hydraulic Hose Kit for Ford F550 (Must also include the 560588010)	\$1,785	
367223210	Hydraulic Hose Kit for RAM - Single Pump (Must also include the 560588010)	\$1,792	
560588010	Priority flow valve w/ relief (Add to hose kit part number if upfit at factory)	\$1,090	
738489000	Install hydraulic components (Add to hose kit part number if upfit at factory)		Add \$1,369

Speed Control			
Part Number	Description	List Price	Installed List Price
480533000	Engine start / stop	\$177	
480535000	Engine start / stop (Includes above part number)		\$1,167
480534000	Auxiliary relay kit	\$139	
480536000	Auxiliary relay kit (Includes above part number)		\$950

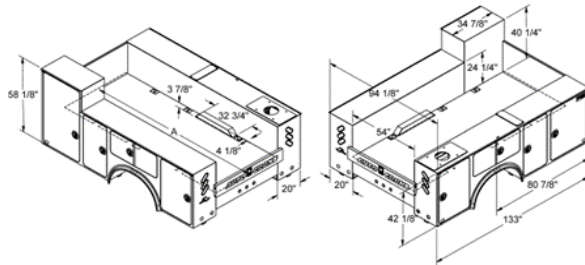
Install Chassis Supplied Back-Up Camera			
Part Number	Description	List Price	Installed List Price
725692010	Install back-up camera that comes with chassis, RAM		\$110
725692020	Install back-up camera that comes with chassis, Ford		\$110
739409620	Install back-up camera that comes with chassis, International/Chevy		\$225

Titan 16 - 11' Body (84" Cab-to-Axle)

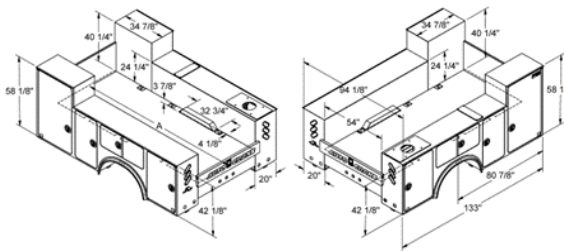
- 10,900 GVWR
- One-piece 10 gauge side-pack design
- Three angled oval lights on the rear of the body
- Integral crane reinforcement up to 16,000 ft. lbs.
- For cranes up to EHC-4
- Flush door panels with bulb seal gasket
- Three-point latching system
- Rugged, durable interlocking channel frame
- Rounded door corners
- Shelf kit is standard – (2) in each front compartment, (2) in each mid compartment, and (1) in each horizontal compartment



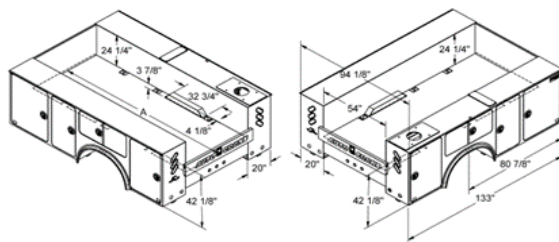
Part Number	Description	List Price
715330001	Titan 16-11' – RS Tall – RS Crane	\$23,400



Part Number	Description	List Price
715330002	Titan 16-11' – LS Tall – RS Crane	\$23,656



Part Number	Description	List Price
715330003	Titan 16-11' – LS/RS Tall – RS Crane	\$23,656



Part Number	Description	List Price
715330004	Titan 16-11' – Standard – RS Crane	\$22,633

Length for "A" Dimension – Standard Bulkhead 131 5/8" – Recessed Bulkhead 123"

* Call Factory for quotes on left side crane bodies and accessories.

Titan 16 - 11' Body Accessories

Bodies

Bulkheads (Choose one with order)			
Part Number	Description	List Price	Installed List Price
715306010	Standard bulkhead (flush with the front of the body)		\$326
715306011	Recessed bulkhead (recessed back from the front of the body)		\$326

Additional Shelving			
Part Number	Description	List Price	Installed List Price
715070001	Shelf kit for rear compartment opposite crane box (2) shelves	\$344	
715078000	Single shelf for front compartment	\$198	
715079000	Single shelf for mid compartment	\$124	
716868000	Install single shelf and shelf strips (Add to part number above)		Add \$111
715070100	Shelving kit, 2 shelves, installed for crane compartment		\$473

Toolboxes			
Part Number	Description	List Price	Installed List Price
715160100	Front compartment – Aluminum Toolbox (1) 7", (2) 5", (4) 3"	\$2,476	
715160101	Front compartment – Aluminum Toolbox (1) 7", (2) 5", (5) 3"	\$2,730	
715160108	Mid compartment - Aluminum Toolbox (1) 7", (2) 5", (4) 3"	\$1,984	
715160300	Horizontal compartment – Aluminum Toolbox (4) 3"	\$1,521	
715160301	Horizontal compartment – Aluminum Toolbox (3) 3"	\$1,220	
715160400	Rear compartment – Aluminum Toolbox (1) 7", (2) 5", (4) 3"	\$2,017	
716862000	Install toolbox (Add to part number above for each toolbox)		Add \$398

Oxygen/Acetylene Compartment Options			
Part Number	Description	List Price	Installed List Price
736233000	Three oxygen/acetylene bottle holders with hose holder (for standard or tall compartment)		\$602
560483100	Oxy divider / shelving package for front compartment (fits 58" tall front compartment)		\$1,396
715136000	Drop-Well Assembly (2" Deep)		\$496

Interior Lighting Options			
https://autocrane.us/product-category/accessories/lights/			
Part Number	Description	List Price	Installed List Price
475300153	LED interior compartment lighting, Right Side Crane	\$2,353	
716869000	Install compartment lighting (Add to part number above)		Add \$961

Grab Handle			
Part Number	Description	List Price	Installed List Price
758025000	Grab handle (1)		\$160

Titan 16 - 11' Body Accessories

Bodies

Bumper / Outriggers			
Part Number	Description	List Price	Installed List Price
715321030	Shipping tube, to be ordered when outriggers are not installed		N/C
715100000	Manual outriggers with standard 8" bumper – Right Side Crane	\$2,097	
715150000	Manual outriggers with standard 12" bumper – Right Side Crane	\$2,002	
715158000	Manual outrigger with 20" workbench bumper – Right Side Crane	\$3,868	
716857000	Install bumper/outrigger (Add to part number above)		Add \$344

Receiver Hitch			
Part Number	Description	List Price	Installed List Price
715135000	Receiver hitch (for 8" and 12" bumpers) - Ford	\$690	
715135011	Receiver hitch (for 8" and 12" bumpers) - Chevrolet or Ram	\$689	
716874000	Install receiver hitch for upfit at factory only for 715135000 hitch (Add to part number above)		Add \$259
738850126	Receiver hitch (for 715158000, 20" bumper)		\$1,156

Trailer Plugs			
Part Number	Description	List Price	Installed List Price
739167000	Trailer socket – heavy duty with round pins (SAE J560)	\$39.50	
739167005	Trailer wiring socket – 7 way spade	\$32.75	
716861400	Install trailer plug (Add to part number above)		Add \$430

Paint			
Part Number	Description	List Price	Installed List Price
750631000	(Auto Crane White) Painted on the outside and inside of the body		\$2,625
716881010	(Auto Crane White) Painted on the outside of the body and multicolor coating on the inside of the compartments		\$3,096
716863000	(Auto Crane White) -painted inside compartments only		\$934
716881020	Coating, multicolor - inside compartments only		\$1,493
900500000	Custom Paint		\$3,636

Titan Armor (In place of Paint)			
https://autocrane.us/product/titan-armor/			
Part Number	Description	List Price	Installed List Price
750631012	Titan Armor, painted white on the outside, multicolor on the inside		\$6,302
750631010	Titan Armor, custom paint on the outside, multicolor on the inside		\$7,623

Titan 16 - 11' Body Accessories

Bodies

Bedliner			
https://autocrane.us/product-category/accessories/coatings/			
Part Number	Description	List Price	Installed List Price
717510001	Bedliner - Floor and Sides Only		\$1,605
717510003	Bedliner - Floor, Sides and Compartment Tops		\$1,956
717510005	Bedliner - Workbench bumper		\$630
717510006	Arctic Package (rock guard coating for paint protection)		\$1,498
717510008	Bedliner - Front of Body		\$840

Boom Support			
Part Number	Description	List Price	Installed List Price
715064020	Boom support (EHC-3.2 & EHC-4 cranes)	\$438	
716858000	Install boom support (Add to part number above)		Add \$159

Light Bars & Headache Racks			
Part Number	Description	List Price	Installed List Price
739317875	Light bar - Titan 16 – left side standard, right side tall		\$929
715309560	Headache rack - Titan 16 – left side standard, right side tall		\$2,067

Work Light Options			
Part Number	Description	List Price	Installed List Price
475300034	LED Floodlight, square, 1600 lumens	\$110	
716861000	Install work lights (Add to part number above)		Add \$213

Underbody Lighting			
Part Number	Description	List Price	Installed List Price
475300420	Underbody Lighting , Kit, 11' Bodies		\$1,515

Compartment Hook Options			
Part Number	Description	List Price	Installed List Price
750613000	Oxygen / acetylene hook assembly		\$46.50
750614000	J-hook		\$21.25
750807000	Chain hook assembly		\$86.50
753241000	Swivel J-hook		\$40

Titan 16 - 11' Body Accessories

Bodies

Master Locking Systems			
Part Number	Description	List Price	Installed List Price
715319105	Master lock system stainless/steel – Standard body		\$1,370
715319106	Master lock system stainless/steel – RS Tall body		\$1,377
715319107	Master lock system stainless/steel – LS Tall body		\$1,377
715319108	Master lock system stainless/steel – LS/RS Tall body		\$1,362

Titan Trax Struts (Full length mounting struts)			
Part Number	Description	List Price	Installed List Price
739185107	Titan Trax, Titan 16, 84CA, raised front compartment, one side, opposite crane box		\$560
715330020	Titan Trax, Titan 16, 84CA, same height length of body, one side, opposite crane box		\$580
715330021	Blank plate mounting kit, Titan 16		\$484
715330025	Blank plate, hose reel mounting kit, Titan 16		\$190
739185109	Mounting plate, Vanair Pro 35, Titan 16		\$537

Fuel & Fuel/DEF Cut-Outs			
Part Number	Description	List Price	Installed List Price
715320020	Fuel / DEF filler cut-outs (2 cut-outs)		\$357
715320021	Fuel cut-out RAM (1 cut-out)		\$191
715320022	Fuel cut-out only, Ford Chassis (1 cut-out)		\$197
715320026	Fuel cut-out only, Chevy Chassis (1 cut-out)		\$197

Body Installation Kits			
Part Number	Description	List Price	Installed List Price
560579000	Body installation kit (for Ford F-350, F-450, and F-550 chassis)	\$587	
560579002	Body installation kit (for 2021 to present diesel Ford chassis)	\$961	
560579100	Body installation kit (for RAM chassis)	\$584	
560581000	Body installation kit (for International/Chevy chassis)	\$212	

Body Installation Charge			
Part Number	Description	List Price	Installed List Price
716851000	Install body on Class 5 and below chassis, includes mud flaps (Add to body part number if upfit at factory)		\$5,552

Titan 16 - 11' Body Accessories

Bodies

Crane Installation Charges

Part Number	Description	List Price	Installed List Price
750678000	Install EC-2X, EHC-3.2 & EHC-4 crane (Add to crane part number if upfit at factory)		\$936
750679000	Install hydraulic crane (Add to crane part number if upfit at factory)		\$1,433

Equipment

Part Number	Description	List Price	Installed List Price
750831000	ICC safety kit (Complies with FMVH Safety Standard No. 125, Sec. 571.125)	\$90.75	
750061000	Fire extinguisher (Complies with FMCS Regs. Sec. 393.95 – classification 2 – A:10-B:C unit)	\$174	
750681000	Backup safety alarm		\$330

PTO (For Factory Intalls Only)

Part Number	Description	List Price	Installed List Price
736997000	PTO and installation for an automatic transmission		\$5,128
736998000	PTO and installation for a manual transmission		\$4,150

Spring Reinforcement

Part Number	Description	List Price	Installed List Price
736995001	Spring reinforcement		\$2,321

Hydraulic Reservoirs

Part Number	Description	List Price	Installed List Price
480420100	15-gallon reservoir with return filter, sight gauge, and suction strainer	\$671	
751095070	36-gallon bulkhead reservoir to fit inside 50" wide cargo area with return filter and sight gauge	\$1,444	
340169400	Oil Cooler Kit (for use when oil temperature exceeds 180°, or application prevents install of recommended 2x total GPM tank capacity, or crane and/or compressor is operated in continuous duty applications)	\$2,970	

Titan 16 - 11' Body Accessories

Bodies

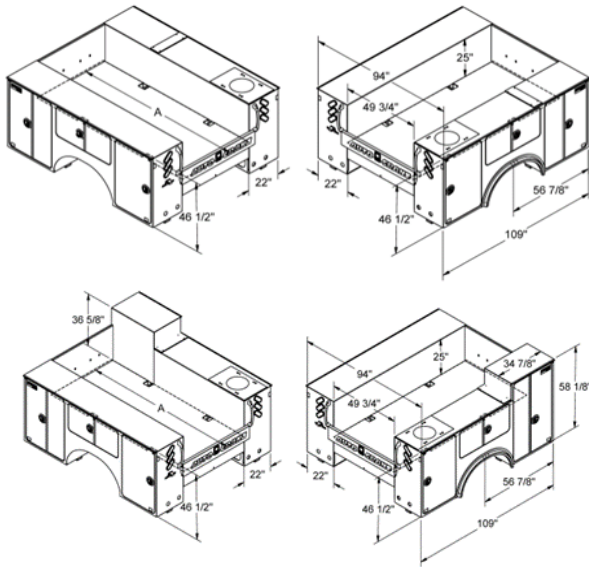
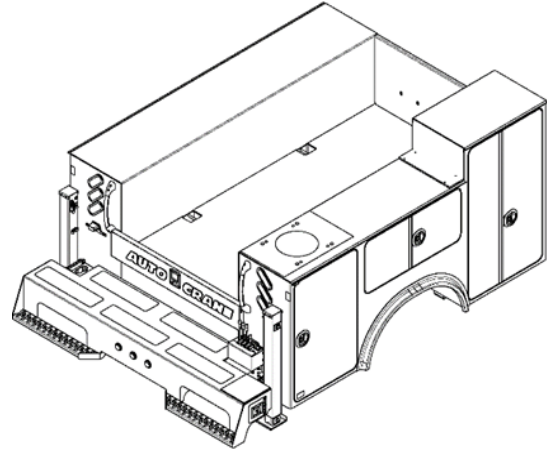
Hydraulic Installation Kits			
Part Number	Description	List Price	Installed List Price
367223200	Hydraulic Hose Kit for Ford F550 (Must also include the 560588010)	\$1,785	
367223210	Hydraulic Hose Kit for RAM - Single Pump (Must also include the 560588010)	\$1,792	
560588010	Priority flow valve w/ relief (Add to hose kit part number if upfit at factory)	\$1,090	
738489000	Install hydraulic components (Add to hose kit part number if upfit at factory)		Add \$1,369

Speed Control			
Part Number	Description	List Price	Installed List Price
480533000	Engine start / stop	\$177	
480535000	Engine start / stop (Includes above part number)		\$1,167
480534000	Auxiliary relay kit	\$139	
480536000	Auxiliary relay kit (Includes above part number)		\$950

Install Chassis Supplied Back-Up Camera			
Part Number	Description	List Price	Installed List Price
725692010	Install back-up camera that comes with chassis, RAM		\$110
725692020	Install back-up camera that comes with chassis, Ford		\$110
739409620	Install back-up camera that comes with chassis, International/Chevy		\$225

Titan 38 - 9' Body (60" Cab-to-Axle)

- 11,200 GVWR
- One-piece 10 gauge side-pack design
- 12 gauge treadplate on tops and cargo area
- Three angled oval lights on the rear of the body
- Integral crane reinforcement up to 38,000 ft-lbs
- For cranes up to HC-7
- Large grab handles
- Fenderettes
- Flush door panels with bulb seal gasket
- Three-point latching system
- Rugged, durable interlocking channel frame
- Rounded door corners



Part Number	Description	List Price
739770001	TITAN 38 - 9' 46" RSC	\$26,328

Part Number	Description	List Price
739770002	TITAN 38 - 9' 46" RST 58" RSC	\$27,232

Length for "A" Dimension – Standard Bulkhead 107 5/8"

Not compatible with the HC-7X, HC-8, or HC-8x cranes

14,500 lbs. chassis required for cranes in excess of 25,000 ft. lbs.

* Call Factory for quotes on left side crane bodies and accessories.

Bulkheads (Choose one with order)			
Part Number	Description	List Price	Installed List Price
739406051	Standard bulkhead (flush with the front of the body)		\$283
739406001	Recessed bulkhead (recessed back from the front of the body)		\$283

Shelving			
Part Number	Description	List Price	Installed List Price
738830008	Shelving package with 5 adjustable shelves, 1 shelf with parts dividers, 1 shelf with book dividers, 3 material hooks		\$1,692
738830007	Shelving for front compartment left side or right side - 1 shelf		\$260
738830003	Shelving for horizontal compartment – right side - 1 shelf with tall dividers		\$392
738830004	Shelving for horizontal compartment - left side - 1 shelf with short dividers		\$385
738830006	Shelving for rear compartment opposite crane box - 3 shelves		\$411
738820002	Slide out tray for horizontal compartment		\$1,550

Toolboxes			
Part Number	Description	List Price	Installed List Price
739380100	Front compartment – Aluminum Toolbox (1) 7", (2) 5", (5) 3"	\$3,347	
760385100	Front compartment (Tall compartment only) – Aluminum Toolbox (2) 7", (2) 5", (5) 3"	\$3,505	
739380302	Horizontal compartment – Aluminum Toolbox (3) 3"	\$1,560	
739380303	Horizontal compartment – Aluminum Toolbox (4) 3"	\$1,699	
739380305	Horizontal compartment – Bolt Bin (15 bin)	\$2,209	
739380201	Rear compartment – Aluminum Toolbox (1) 7", (2) 5", (5) 3"	\$2,644	
716862000	Install toolbox (Add to part number above for each toolbox)		Add \$398

Oxygen/Acetylene Compartment Options			
Part Number	Description	List Price	Installed List Price
736233000	Three oxygen/acetylene bottle holders with hose holder		\$602
560483000	Oxy divider / shelving package for front compartment (fits 58" tall front compartment)		\$1,006
560206000	Drop-well Assembly (2" deep)		\$467
560258000	Drop-well assembly (6" deep)		\$614

Interior Lighting Options			
https://autocrane.us/product-category/accessories/lights/			
Part Number	Description	List Price	Installed List Price
475300155	LED interior compartment lighting, Right Side Crane	\$820	
716869000	Install compartment lighting (Add to part number above)		Add \$961

Outriggers			
Part Number	Description	List Price	Installed List Price
715321030	Shipping tube, to be ordered when outriggers are not installed		N/C
738896000	Full manual outriggers – Right Side Crane	\$3,088	
738843000	Manual in/out, hydraulic up/down outriggers – Right Side Crane	\$7,477	
738493000	Full hydraulic outriggers – Right Side Crane	\$7,547	
738493300	Full hydraulic outriggers, remote mount valve bank - Right Side Crane	\$8,048	
716857000	Install outrigger (Add to part number above)		Add \$344
725967000	Drop down outrigger, fits Titan 38 front right side (Required for cranes greater than 25,000 ft. lbs. for stability. Mounts to truck frame, NOT body. See note below.)	\$3,051	
725966000	Drop down outrigger installed (Includes above part number)		\$4,789

Note: Depending on ancillary equipment, Titan 38, 60CA bodies on light duty trucks with cranes larger than 25,000 ft. lbs. may require either this leg or be placarded for reduced capacity on the crane side forward or rear outrigger. However, Auto Crane Titan 38 84" CA is fully stable with 38,000 ft.lb. 20 ft. boom crane without the use of the front corner jackleg if used with appropriate outriggers.

Bumpers & Accessories			
Part Number	Description	List Price	Installed List Price
738750000	12" standard duty bumper – Right Side Crane	\$1,949	
738752000	20" workbench bumper (storage and vise plate) – Right Side Crane	\$3,311	
738752015	20" workbench bumper, no cut-out for valve bank - Right Side Crane	\$3,432	
716856000	Install bumper mounting plates (Add to part number above)		Add \$185
716856001	Install bumper (Add to bumper part number if it is a factory upfit, includes installing bumper mounting plates)		Add \$375
738823000	Reinforced bumper overlay (for 20" bumper)		\$1,376
717530101	Wilton 6" Vise	\$944	
717530011	Install vise, tapped plate (add to vise part number above)		Add \$306
717530002	Wilton 8" Vise		\$1,636

Receiver Hitch			
Part Number	Description	List Price	Installed List Price
738860010	Receiver hitch for 12" bumper (Ford chassis)		\$984
738850112	Receiver hitch for 20" bumper (Ford or RAM chassis)		\$1,005

Trailer Plugs			
Part Number	Description	List Price	Installed List Price
739167000	Trailer socket – heavy duty with round pins (SAE J560)	\$39.50	
739167005	Trailer wiring socket – 7 way spade	\$32.75	
716861400	Install trailer plug (Add to part number above)		Add \$430

Paint			
https://autocrane.us/product-category/accessories/coatings/			
Part Number	Description	List Price	Installed List Price
750631000	(Auto Crane White) Painted on the outside & inside of the body		\$2,625
716881010	(Auto Crane White) Painted on the outside of the body and multicolor coating on the inside of the compartments		\$3,096
716863000	(Auto Crane White) -painted inside compartments only		\$934
716881020	Coating, multicolor - inside compartments only		\$1,493
900500000	Custom Paint		\$3,636

Titan Armor (In place of Paint)			
https://autocrane.us/product/titan-armor/			
Part Number	Description	List Price	Installed List Price
750631012	Titan Armor, painted white on the outside, multicolor on the inside		\$6,302
750631010	Titan Armor, custom paint on the outside, multicolor on the inside		\$7,623

Bedliner & Rock Guard Options			
https://autocrane.us/product-category/accessories/coatings/			
Part Number	Description	List Price	Installed List Price
717510001	Bedliner - Floor and Sides Only		\$1,605
717510003	Bedliner - Floor, Sides and Compartment Tops		\$1,956
717510005	Bedliner - Workbench bumper		\$630
717510006	Arctic Package (rock guard coating for paint protection)		\$1,498
717510008	Bedliner - Front of Body		\$840
739408011	Rock guard installation, 21" x 21" aluminum diamond plated		\$568

Boom Support			
Part Number	Description	List Price	Installed List Price
715064020	Boom support (EHC-3.2 & EHC-4 cranes)	\$438	
560195015	Boom support (EHC-5 – HC-14 cranes)	\$684	
716858000	Install boom support (Add to part number above)		Add \$159

Light Bars & Headache Racks (Ford & RAM)			
Part Number	Description	List Price	Installed List Price
739226009	Light Bar - Titan 38 - left side standard, right side tall		\$1,027
715309516	Headache Rack – Titan 38 – standard body		\$2,075
739065115	Headache Rack – Titan 38 – left side standard, right side tall		\$2,063

Titan 38 - 9' Body Accessories

Bodies

Work Light Options			
Part Number	Description	List Price	Installed List Price
475300034	LED Floodlight, square, 1600 lumens	\$110	
716861000	Install work lights (Add to part number above)		Add \$213

Underbody Lighting			
Part Number	Description	List Price	Installed List Price
475300425	Underbody Lighting , Kit, 9' Bodies		\$1,158

Compartment Hook Options			
Part Number	Description	List Price	Installed List Price
750613000	Oxygen / acetylene hook assembly		\$46.50
750614000	J-hook		\$21.25
750807000	Chain hook assembly		\$86.50
753241000	Swivel J-hook		\$40

Master Locking Systems			
Part Number	Description	List Price	Installed List Price
738805005	Master lock system stainless/steel – Standard body		\$1,384
738805006	Master lock system stainless/steel – RS Tall body		\$1,380

Titan Trax Struts (Full length mounting struts)			
Part Number	Description	List Price	Installed List Price
Call Factory	Titan Trax, Titan 38 - 9', raised front compartment, one side, opposite crane box		\$490
Call Factory	Titan Trax, Titan 38 - 9', same height full length of body, one side, opposite crane box		\$534
739185037	Mounting plate, RC40 compressor		\$480
739185055	Mounting plate, AC40 and RS80 compressor		\$546
739185056	Mounting plate, RS85 compressor		\$538
739185057	Blank plate mounting kit, Titan 38-85		\$459
739185065	Mounting plate, EnPak and reservoir		\$947
739185070	Mountng plate, Vanair I300		\$871
739185075	Mounting plate, VMAC H40		\$483
739185088	Mounting plate, Miller Bobcat 250 and Trailblazer 325		\$411

Salvage System			
Part Number	Description	List Price	Installed List Price
601000008	Salvage system, integrated, single tank, 60 gal	\$5,177	

Body Installation Kits			
Part Number	Description	List Price	Installed List Price
560579000	Body installation kit (for Ford F-350, F-450, and F-550 chassis)	\$587	
560579002	Body installation kit (for 2021 diesel F-550 & F-600 chassis)	\$961	
560579100	Body installation kit (for RAM chassis)	\$584	
560581000	Body installation kit (for International/Chevy chassis)	\$212	

Fuel & Fuel/DEF Cut-Outs			
Part Number	Description	List Price	Installed List Price
739188070	Fuel / DEF filler cut-outs (2 cut-outs)		\$357
739188080	Fuel cutout RAM (1 cut-out)		\$197
739188081	Fuel cutout International & Chevy (1 cut-out)		\$197
739188075	Fuel only cutout (Ford)		\$185
739320354	DEF filler bracket		\$169

Body Installation Charge			
Part Number	Description	List Price	Installed List Price
716851000	Install body on Class 5 and below chassis, includes mud flaps (Add to body part number if upfit at factory)		\$5,552

Crane Installation Charges			
Part Number	Description	List Price	Installed List Price
750678000	Install 2003, 3203, or 4004EH crane (Add to crane part number if upfit at factory)		\$936
750679000	Install hydraulic crane (Add to crane part number if upfit at factory)		\$1,433
360870000	Install 5005EH or 6006EH crane - includes battery and battery box (Add to crane part number if upfit at factory)		\$1,543

Equipment			
Part Number	Description	List Price	Installed List Price
750831000	ICC safety kit (Complies with FMVH Safety Standard No. 125, Sec. 571.125)	\$90.75	
750061000	Fire extinguisher (Complies with FMCS Regs. Sec. 393.95 – classification 2 – A:10-B:C unit)	\$174	
750681000	Backup safety alarm		\$330

Spring Reinforcement			
Part Number	Description	List Price	Installed List Price
736995001	Spring reinforcement		\$2,321

Titan 38 - 9' Body Accessories

Bodies

PTO (For Factory Installs Only)

Part Number	Description	List Price	Installed List Price
736997000	PTO and installation for an automatic transmission		\$5,128
736998000	PTO and installation for a manual transmission		\$4,150

Hydraulic Reservoirs

Part Number	Description	List Price	Installed List Price
480420100	15-gallon reservoir with return filter, sight gauge, and suction strainer	\$671	
751095070	36-gallon bulkhead reservoir to fit inside 50" wide cargo area with return filter and sight gauge	\$1,444	
340169400	Oil Cooler Kit (for use when oil temperature exceeds 180°, or application prevents install of recommended 2x total GPM tank capacity, or crane and/or compressor is operated in continuous duty applications)	\$2,970	

Hydraulic Installation Kits

Part Number	Description	List Price	Installed List Price
367223200	Hydraulic Hose Kit for Ford F550 (Must also include the 560588010)	\$1,785	
367223210	Hydraulic Hose Kit for RAM - Single Pump (Must also include the 560588010)	\$1,792	
367223300	Hydraulic Hose Kit for International/Chevy - (Must also include the 560588010)	\$1,013	
560588010	Priority flow valve w/ relief (Add to hose kit part number if upfit at factory)	\$1,090	
738489000	Install hydraulic components (Add to hose kit part number if upfit at factory)		Add \$1,369

Speed Control

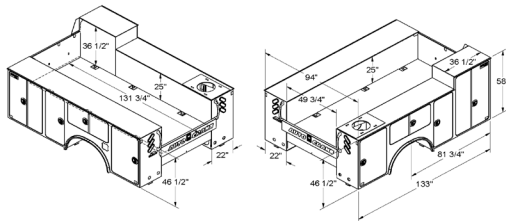
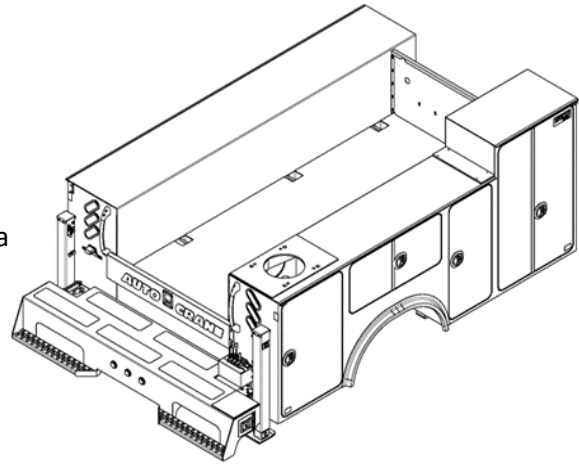
Part Number	Description	List Price	Installed List Price
480533000	Engine start / stop	\$177	
480535000	Engine start / stop (Includes above part number)		\$1,167
480534000	Auxiliary relay kit	\$139	
480536000	Auxiliary relay kit (Includes above part number)		\$950

Install Chassis Supplied Back-Up Camera

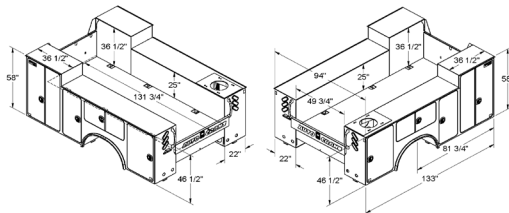
Part Number	Description	List Price	Installed List Price
725692010	Install back-up camera that comes with chassis, RAM		\$110
725692020	Install back-up camera that comes with chassis, Ford		\$110
739409620	Install back-up camera that comes with chassis, International/Chevy		\$225

Titan 38 - 11' Body (Titan Connect Body) (84" Cab-to-Axle)

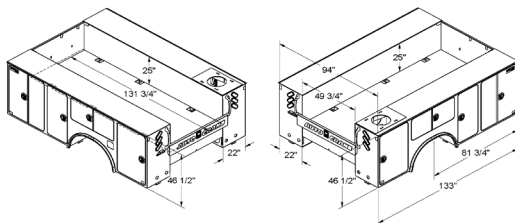
- 11,200 GVWR
- One-piece 10 gauge side-pack design
- 12 gauge treadplate on tops and cargo area
- Three angled oval lights on the rear of the body
- Integral crane reinforcement up to 52,000 ft-lbs off the rear of the body and 43,000 ft-lbs off the sides
- For cranes up to HC-8x
- Large grab handles
- Fenderettes
- Flush door panels with bulb seal gasket
- Three-point latching system
- Rugged, durable interlocking channel frame
- Rounded door corners
- One cut-out for fuel



Part Number	Description	List Price
739322001	TITAN 38 - 11' 46" RST 58" RSC	\$27,365



Part Number	Description	List Price
739322005	TITAN 38 - 11' 46" RST/LST 58" RSC	\$27,862



Part Number	Description	List Price
739322004	TITAN 38 - 11' 46" RSC	\$26,935

Length for "A" Dimension – Standard Bulkhead 131 5/8" – Recessed Bulkhead 123"

14,500 lbs. chassis required for cranes in excess of 25,000 ft. lbs.

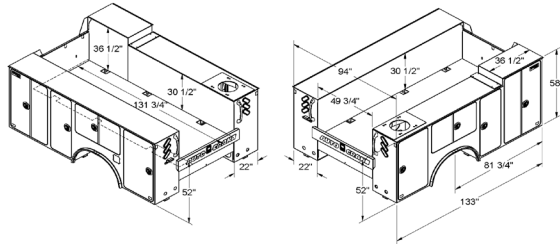
* HC-7x, HC-8, and HC-8x cranes must be equipped with 738493000 outriggers or equal

* Call Factory for quotes on left side crane bodies and accessories.

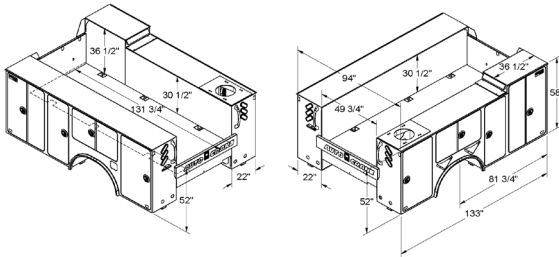
**** Body does not come with a wiring harness. Wiring harness comes with Titan Connect kit for HC model cranes or add part number 560106003 for EHC model cranes.**

Titan 38 - 11' Body (Continued)

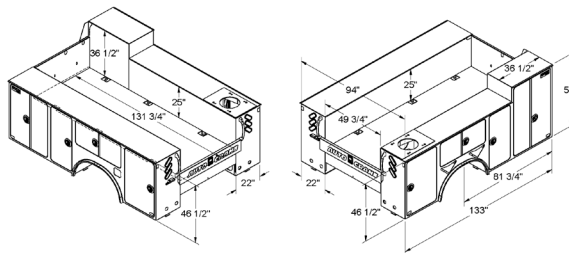
(84" Cab-to-Axle)



Part Number	Description	List Price
739322002	TITAN 38 - 11' 52" RST 58" RSC	\$28,124



Part Number	Description	List Price
739322000	TITAN 38 - 11' 52" RST 58" RSC CB (with vent hood for oxy/acet)	\$28,409



Part Number	Description	List Price
739322006	TITAN 38 - 11' 46" RST 58" RSC CB	\$27,626

Length for "A" Dimension – Standard Bulkhead 131 5/8" – Recessed Bulkhead 123"

14,500 lbs. chassis required for cranes in excess of 25,000 ft. lbs.

* HC-7x, HC-8, and HC-8x cranes must be equipped with 738493000 outriggers or equal

* Call Factory for quotes on left side crane bodies and accessories.

**** Body does not come with a wiring harness. Wiring harness comes with Titan Connect kit for HC model cranes or add part number 560106003 for EHC model cranes**

Bulkheads (Choose one with order)			
Part Number	Description	List Price	Installed List Price
739406051	Standard bulkhead (flush with the front of the body)		\$283
739406001	Recessed bulkhead (recessed back from the front of the body)		\$283

Shelving			
Part Number	Description	List Price	Installed List Price
738830000	Shelving package with 11 adjustable shelves, 1 shelf with parts dividers, 1 shelf with book dividers, 3 material hooks		\$2,543
738830001	Shelving for front compartment left side or right side - 1 shelf		\$266
738830002	Shelving for mid compartment left side or right side – 3 shelves		\$436
738830003	Shelving for horizontal compartment right side - 1 shelf - tall dividers		\$392
738830004	Shelving for horizontal compartment left side - 1 shelf - short dividers		\$385
738830006	Shelving for rear compartment opposite crane box - 3 shelves		\$411
738830011	Shelving for crane compartment – 1 shelf		\$292
738820002	Slide out tray for horizontal compartment		\$1,550

Toolboxes			
Part Number	Description	List Price	Installed List Price
739380100	Front compartment – Aluminum Toolbox (1) 7", (2) 5", (5) 3"	\$3,347	
760385100	Front compartment (Tall compartment only) – Aluminum Toolbox (2) 7", (2) 5", (5) 3"	\$3,505	
739380201	Mid compartment – Aluminum Toolbox (1) 7", (2) 5", (5) 3"	\$2,644	
739380204	Mid compartment – Bolt Bin (18 bin)	\$2,339	
739380302	Horizontal compartment – Aluminum Toolbox (3) 3"	\$1,560	
739380303	Horizontal compartment – Aluminum Toolbox (4) 3"	\$1,699	
739380305	Horizontal compartment – Bolt Bin (15 bin)	\$2,209	
739380201	Rear compartment – Aluminum Toolbox (1) 7", (2) 5", (5) 3"	\$2,644	
716862000	Install toolbox (Add to part number above for each toolbox)		Add \$398

Boom Support			
Part Number	Description	List Price	Installed List Price
715064020	Boom support (EHC-3.2 & EHC-4 cranes)	\$438	
560195015	Boom support (EHC-5 – HC-14 cranes)	\$684	
716858000	Install boom support (Add to part number above)		Add \$159

Interior Lighting Options https://autocrane.us/product-category/accessories/lights/			
Part Number	Description	List Price	Installed List Price
475300157	LED interior compartment lighting for 46" tall bodies, RSC	\$1,250	
475300164	LED interior compartment lighting for 52" tall bodies, RSC	\$1,250	
716869000	Install compartment lighting (Add to part number above)		Add \$961
716869001	Install compartment lighting, Titan Connect (Add to part number above if Titan Connect is also being installed)		Add \$501

Underbody Lighting			
Part Number	Description	List Price	Installed List Price
475300420	Underbody Lighting , Kit, 11'		\$1,515

Oxygen/Acetylene Compartment Options			
Part Number	Description	List Price	Installed List Price
736233000	Three oxygen/acetylene bottle holders with hose holder (for standard or tall compartment)		\$602
560483000	Oxy divider / shelving package for front compartment (fits 58" tall front compartment)		\$1,006
560544000	Mid compartment oxygen/acetylene holder (2 bottles)		\$596
736373000	Mid compartment oxy/acet bottle holder (2 bottle, clamp)		\$396
560206000	Drop-well Assembly (2" deep)		\$467
560258000	Drop-well assembly (6" deep)		\$614
560446000	Mid compartment drop-well (2" deep)		\$535

Hand Rails			
Part Number	Description	List Price	Installed List Price
560545008	Hand rail, from top left rear of body to bumper (20" bumper only)	\$470	
772061018	Install hand rail (Add to part number above)		Add \$173

Outriggers			
Part Number	Description	List Price	Installed
715321030	Shipping tube, to be ordered when outriggers are not installed		N/C
738896000	Full manual outriggers – Right Side Crane	\$3,088	
738843000	Manual in/out, hydraulic up/down outriggers – Right Side Crane	\$7,477	
738493000	Full hydraulic outriggers – Right Side Crane	\$7,547	
738493300	Full hydraulic outriggers, remote mount valve bank - Right Side Crane	\$8,048	
716857000	Install outrigger (Add to part number above)		Add \$344

Bumpers & Accessories			
Part Number	Description	List Price	Installed
738750000	12" standard duty bumper – Right Side Crane	\$1,949	
738752000	20" workbench bumper (storage and vise plate) – Right Side Crane	\$3,311	
738752015	20" workbench bumper, no cut-out for valve bank - Right Side Crane	\$3,432	
739175000	24" workbench bumper (storage and vise plate) – Right Side Crane	\$3,200	
739175105	24" V-Groove bumper w/large compartment – Right Side Crane	\$4,424	
739175400	24" V-Groove bumper, no cut-out for valve bank – Right Side Crane	\$4,205	
716856000	Install bumper mounting plates (Add to part number above)		Add \$185
716856001	Install bumper (Add to bumper part number if it is a factory upfit, includes installing bumper mounting plates)		Add \$375
738823000	Reinforced bumper overlay (for 20" bumper)		\$1,376
560538000	Reinforced bumper overlay (for 24" bumper)		\$1,504
717530101	Wilton 6" Vise	\$944	
717530011	Install vise, tapped plate (add to vise part number above)		Add \$306
717530002	Wilton 8" Vise		\$1,636

Receiver Hitch			
Part Number	Description	List Price	Installed List Price
738860010	Receiver hitch for 12" bumper (Ford chassis)		\$984
738850112	Receiver hitch for 20" bumper (Ford or RAM chassis)		\$1,005
738850113	Receiver hitch for 24" bumper (Ford or RAM chassis)		\$1,169

Trailer Plugs			
Part Number	Description	List Price	Installed List Price
739167000	Trailer socket – heavy duty with round pins (SAE J560)	\$39.50	
739167005	Trailer wiring socket – 7 way spade	\$32.75	
716861400	Install trailer plug (Add to part number above)		Add \$430

Paint			
https://autocrane.us/product-category/accessories/coatings/			
Part Number	Description	List Price	Installed List Price
750631000	(Auto Crane White) Painted on the outside and inside of the body		\$2,625
716881010	(Auto Crane White) Painted on the outside of the body and multicolor coating on the inside of the compartments		\$3,096
716863000	(Auto Crane White) -painted inside compartments only		\$934
716881020	Coating, multicolor - inside compartments only		\$1,493
900500000	Custom Paint		\$3,636

Titan 38 - 11' Body Accessories

Bodies

Titan Armor (In place of Paint) https://autocrane.us/product/titan-armor/			
Part Number	Description	List Price	Installed List Price
750631012	Titan Armor, painted white on the outside, multicolor on the inside		\$6,302
750631010	Titan Armor, custom paint on the outside, multicolor on the inside		\$7,623

Bedliner & Rock Guard Options https://autocrane.us/product-category/accessories/coatings/			
Part Number	Description	List Price	Installed List Price
717510001	Bedliner - Floor and Sides Only		\$1,605
717510003	Bedliner - Floor, Sides and Compartment Tops		\$1,956
717510005	Bedliner - Workbench bumper		\$630
717510006	Arctic Package (rock guard coating for paint protection)		\$1,498
717510008	Bedliner - Front of Body		\$840
739408011	Rock guard installation, 21" x 21" aluminum diamond plated		\$568

Work Light Options			
Part Number	Description	List Price	Installed List Price
475300034	LED Floodlight, square, 1600 lumens	\$110	
716861000	Install work lights (Add to part number above)		Add \$213

Light Bars & Headache Racks (Ford & RAM)			
Part Number	Description	List Price	Installed List Price
739226009	Light Bar - Titan 38 - left side standard, right side tall		\$1,027
739226015	Light Bar - Titan 38 - left side and right side tall		\$1,035
739317855	Light Bar - Titan 38 - 58"/52" tall sides		\$979
560710106	Headache Rack - 24 1/2" tall - Titan 38-85 (both front compartments same height)		\$2,066
715309516	Headache Rack - Titan 38 - standard sides		\$2,075
739065115	Headache Rack - Titan 38 - left side standard, right side tall		\$2,063
739065116	Headache Rack - Titan 38 - 58"/52" tall sides		\$2,079

Compartment Hook Options			
Part Number	Description	List Price	Installed List Price
750613000	Oxygen / acetylene hook assembly		\$46.50
750614000	J-hook		\$21.25
750807000	Chain hook assembly		\$86.50
753241000	Swivel J-hook		\$40

Titan 38 - 11' Body Accessories

Bodies

Master Locking Systems			
Part Number	Description	List Price	Installed List Price
738695100	Master lock system stainless/steel – RS Tall body		\$1,371
738695102	Master lock system stainless/steel – LS/RS Tall body		\$1,371
738695103	Master lock system stainless/steel – LS Tall body		\$1,371
738695101	Master lock system stainless/steel – Standard body		\$1,363
739317951	Master lock system stainless/steel – 58"/52" Tall body		\$1,361

Titan Trax Struts (Full length mounting struts)			
Part Number	Description	List Price	Installed List Price
739185031	Titan Trax, Titan 38 - 11', raised front compartment, one side, opposite crane box		\$517
739185085	Titan Trax, Titan 38 - 11', same height full length of body, one side, opposite crane box		\$580
739185037	Mounting plate, RC40 compressor		\$480
739185055	Mounting plate, AC40 and RS80 compressor		\$546
739185056	Mounting plate, RS85 compressor		\$538
739185057	Blank plate mounting kit, Titan 38-85		\$459
739185065	Mounting plate, EnPak and reservoir		\$947
739185070	Mountng plate, Vanair I300		\$871
739185075	Mounting plate, VMAC H40		\$483
739185088	Mounting plate, Miller Bobcat 250 and Trailblazer 325		\$411

Salvage System			
Part Number	Description	List Price	Installed List Price
601000008	Salvage system, integrated, single tank, 60 gal	\$5,177	

Sliding Tops			
Part Number	Description	List Price	Installed List Price
Factory Quote	Lockable sliding top - Titan 38 - 84" CA	Factory Quote	
900504000	Paint sliding top (Auto Crane White)		\$908
900504001	Paint sliding top custom color		\$1,457
716884000	Install sliding top (Add to part number above)		Add \$1,950

DEF Brackets			
Part Number	Description	List Price	Installed List Price
739320354	DEF bracket, Ford chassis (front of body)		\$169

* (Fuel bracket comes with Titan 38-11' bodies only)

Titan 38 - 11' Body Accessories

Bodies

Body Installation Kits (to be used with Titan Connect)			
Part Number	Description	List Price	Installed List Price
560579001	Body installation kit (for Ford F-350, F-450, and F-550 chassis)	\$601	
560579101	Body installation kit (for RAM chassis)	\$516	
560579201	Body installation kit (for International/Chevy chassis)	\$287	

Body Installation Kits (when Titan Connect is not used)			
Part Number	Description	List Price	Installed List Price
560579000	Body installation kit (for Ford F-350, F-450, and F-550 chassis)	\$587	
560579002	Body installation kit (for 2021 diesel F-550 & F-600 chassis)	\$961	
560579100	Body installation kit (for RAM chassis)	\$584	
560581000	Body installation kit (for International/Chevy chassis)	\$212	

Body Installation Charge (to be used with Titan Connect)			
Part Number	Description	List Price	Installed List Price
716870000	Install Titan Connect body on Class 5 and below chassis, includes mud flaps (Add to body part number if upfit at factory)		\$4,236

Body Installation Charge (when Titan Connect is not used)			
Part Number	Description	List Price	Installed List Price
716851000	Install body on Class 5 and below chassis, includes mud flaps (Add to body part number if upfit at factory)		\$5,552

Crane Installation Charges			
Part Number	Description	List Price	Installed List Price
750678000	Install 2003, 3203, or 4004EH crane (Add to crane part number if upfit at factory)		\$936
750679000	Install hydraulic crane (Add to crane part number if upfit at factory)		\$1,433
360870000	Install 5005EH or 6006EH crane - includes battery and battery box (Add to crane part number if upfit at factory)		\$1,543

Equipment			
Part Number	Description	List Price	Installed List Price
750831000	ICC safety kit (Complies with FMVH Safety Standard No. 125, Sec. 571.125)	\$90.75	
750061000	Fire extinguisher (Complies with FMCS Regs. Sec. 393.95 – classification 2 – A:10-B:C unit)	\$174	
750681000	Backup safety alarm		\$330

Titan 38 - 11' Body Accessories

Bodies

PTO (For Factory Intalls Only)

Part Number	Description	List Price	Installed List Price
736997000	PTO and installation for an automatic transmission		\$5,128
736998000	PTO and installation for a manual transmission		\$4,150

Spring Reinforcement

Part Number	Description	List Price	Installed List Price
736995001	Spring reinforcement		\$2,321

Hydraulic Reservoirs

Part Number	Description	List Price	Installed List Price
480420100	15-gallon reservoir with return filter, sight gauge, and suction strainer	\$671	
751095070	36-gallon bulkhead reservoir to fit inside 50" wide cargo area with return filter and sight gauge	\$1,444	
340169400	Oil Cooler Kit (for use when oil temperature exceeds 180°, or application prevents install of recommended 2x total GPM tank capacity, or crane and/or compressor is operated in continuous duty applications)	\$2,970	

Hydraulic Installation Kits

Part Number	Description	List Price	Installed List Price
367223200	Hydraulic Hose Kit for Ford F550 (Must also include the 560588010)	\$1,785	
367223210	Hydraulic Hose Kit for RAM - Single Pump (Must also include the 560588010)	\$1,792	
367223300	Hydraulic Hose Kit for International/Chevy - (Must also include the 560588010)	\$1,013	
560588010	Priority flow valve w/ relief (Add to hose kit part number if upfit at factory)	\$1,090	
738489000	Install hydraulic components (Add to hose kit part number if upfit at factory)		Add \$1,369

Install Chassis Supplied Back-Up Camera

Part Number	Description	List Price	Installed List Price
725692010	Install back-up camera that comes with chassis, RAM		\$110
725692020	Install back-up camera that comes with chassis, Ford		\$110
739409620	Install back-up camera that comes with chassis, International/Chevy		\$225

Titan 38 - 11' Body Accessories

Bodies

Speed Control (select when Titan Connect is not used)

Part Number	Description	List Price	Installed List Price
480533000	Engine start / stop	\$177	
480535000	Engine start / stop (Includes above part number)		\$1,167
480534000	Auxiliary relay kit	\$139	
480536000	Auxiliary relay kit (Includes above part number)		\$950

Wiring Harness (select when Titan Connect is not used)

Part Number	Description	List Price	Installed List Price
560106003	Wiring harness	\$884	

Titan Connect Adapter Harness

Part Number	Description	List Price	Installed List Price
755501013	Adapter harness for RC40 compressor (for Titan Connect)	\$54.50	
475300367	Adapter harness for RC40-L compressor (for Titan Connect)	\$67.75	

Titan Connect (for HC NexStar model cranes only)

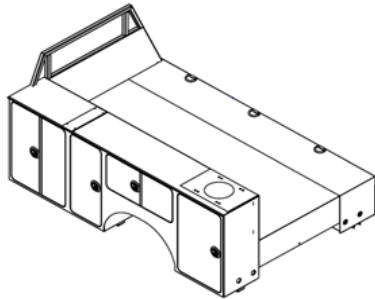
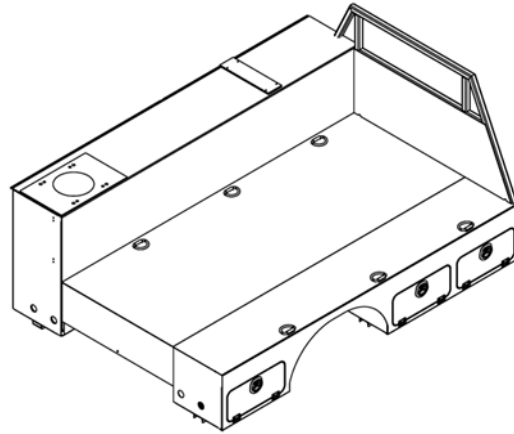
Part Number	Description	List Price	Installed List Price
475300350	Titan Connect, Kit, 11' bodies (comes with harness and keypad)	\$2,774	
475300360	Titan Connect, Kit, 11' bodies, Installed (Includes above part number)		\$4,451
475300361	Dealer Titan Connect kit (each upfit facility will need one of these for the programming of Titan Connect)	\$1,622	

Power On-Demand (used with Titan Connect only)

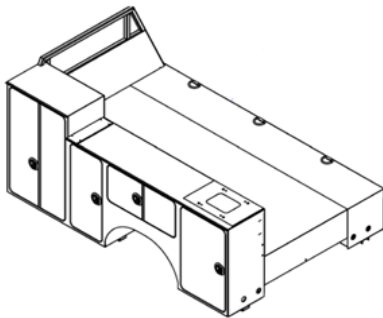
Part Number	Description	List Price	Installed List Price
475300365	Power On-Demand		\$2,100

Propane Body - Titan 38 - 11' Body (84" Cab-to-Axle)

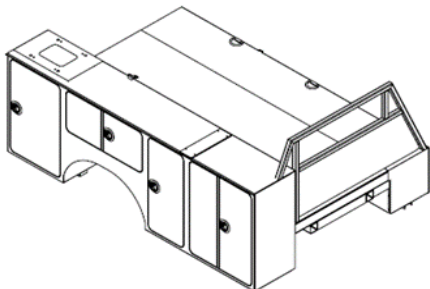
- 16,000 GVWR
- One-piece 10 gauge side-pack design
- For cranes up to HC-8x
- Fenderette
- Flush door panels with bulb seal gasket
- Three-point latching system
- Rounded door corners
- Compartments on short side behind and in front of rear wheel



Part Number	Description	List Price
739100000	Propane body – Standard – LSC	\$26,698



Part Number	Description	List Price
739100001	Propane body – LS Tall – LSC	\$27,431



Part Number	Description	List Price
739100002	Propane body – Standard - RSC	\$26,200

* HC-7x, HC-8, and HC-8x cranes must be equipped with 738497000 outriggers or equal

Shelving			
Part Number	Description	List Price	Installed List Price
738830009	Shelving package with 4 adjustable shelves, 1 shelf with dividers, and 3 material hooks		\$1,133
738830001	Shelving for front compartment left side or right side - 1 shelf		\$266
738830002	Shelving for mid compartment left side or right side – 3 shelves		\$436
738830003	Shelving for horizontal compartment – right side - 1 shelf with tall dividers		\$392
738830004	Shelving for horizontal compartment left side - 1 shelf with short dividers		\$385

Toolboxes			
Part Number	Description	List Price	Installed List Price
739380100	Front compartment – Aluminum Toolbox (1) 7", (2) 5", (5) 3"	\$3,347	
760385100	Front compartment (Tall compartment only) – Aluminum Toolbox (2) 7", (2) 5", (5) 3"	\$3,505	
739380201	Mid compartment – Aluminum Toolbox (1) 7", (2) 5", (5) 3"	\$2,644	
739380204	Mid compartment – Bolt Bin (18 bin)	\$2,339	
739380302	Horizontal compartment – Aluminum Toolbox (3) 3"	\$1,560	
739380303	Horizontal compartment – Aluminum Toolbox (4) 3"	\$1,699	
739380305	Horizontal compartment – Bolt Bin (15 bin)	\$2,209	
716862000	Install toolbox (Add to part number above for each toolbox)		Add \$398

Oxygen/Acetylene Compartment Options			
Part Number	Description	List Price	Installed List Price
736233000	Three oxygen/acetylene bottle holders with hose holder (for standard or tall compartment)		\$602
560483000	Oxy divider / shelving package for front compartment (fits 58" tall front compartment)		\$1,006
560544000	Mid compartment oxygen/acetylene holder (2 bottles)		\$596
736373000	Mid compartment oxy/acet bottle holder (2 bottle, clamps)		\$396
560206000	Drop-well Assembly (2" deep)		\$467
560258000	Drop-well assembly (6" deep)		\$614
560446000	Mid compartment drop-well (2" deep)		\$535

Interior Lighting Options			
https://autocrane.us/product-category/accessories/lights/			
Part Number	Description	List Price	Installed List Price
475300161	LED interior compartment lighting, Left Side Crane	\$540	
475300162	LED interior compartment lighting, Right Side Crane	\$540	
716879000	Install interior lights (Add to part number above)		Add \$231

Propane Body - Titan 38 - Accessories

Bodies

Outriggers			
Part Number	Description	List Price	Installed List Price
715321030	Shipping tube, to be ordered when outriggers are not installed		N/C
738896000	Full manual outriggers – Right Side Crane	\$3,088	
738897000	Full manual outriggers – Left Side Crane	\$3,027	
738484500	Full hydraulic outriggers – Left Side Crane	\$7,708	
738484600	Full hydraulic outriggers – Right Side Crane	\$7,530	
738497000	Full hydraulic outriggers (HD) - Left Side Crane	\$8,747	
716857000	Install outrigger (Add to part number above)		Add \$344

Bumpers & Accessories			
Part Number	Description	List Price	Installed List Price
738870001	12" standard duty bumper with lights – Left Side Crane	\$2,281	
738870002	12" standard duty bumper with lights – Right Side Crane	\$2,281	
738870300	20" workbench bumper with tail lights (storage and vise plate) – Right Side Crane	\$3,334	
738870350	20" workbench bumper with tail lights (storage and vise plate) – Left Side Crane	\$3,364	
716856000	Install bumper mounting plates (Add to part number above)		Add \$185
716856001	Install bumper (Add to bumper part number if it is a factory upfit, includes installing bumper mounting plates)		Add \$375
717530101	Wilton 6" Vise	\$944	
717530011	Install vise, tapped plate (add to vise part number above)		Add \$306
717530002	Wilton 8" Vise		\$1,636

Receiver Hitch			
Part Number	Description	List Price	Installed List Price
738860010	Receiver hitch for 12" bumper (Ford chassis)		\$984
738850112	Receiver hitch for 20" bumper (Ford or RAM chassis)		\$1,005

Trailer Plugs			
Part Number	Description	List Price	Installed List Price
739167000	Trailer socket – heavy duty with round pins (SAE J560)	\$39.50	
739167005	Trailer wiring socket – 7 way spade	\$32.75	
716861400	Install trailer plug (Add to part number above)		Add \$430

Underbody Lighting			
Part Number	Description	List Price	Installed List Price
475300420	Underbody Lighting , Kit, 11' Bodies		\$1,515

Paint			
https://autocrane.us/product-category/accessories/coatings/			
Part Number	Description	List Price	Installed List Price
750631000	(Auto Crane White) Painted on the outside and inside of the body		\$2,625
716881010	(Auto Crane White) Painted on the outside of the body and multicolor coating on the inside of the compartments		\$3,096
716863000	(Auto Crane White) -painted inside compartments only		\$934
716881020	Coating, multicolor -inside compartments only		\$1,493
900500000	Custom Paint		\$3,636

Titan Armor (In place of Paint)			
https://autocrane.us/product/titan-armor/			
Part Number	Description	List Price	Installed List Price
750631012	Titan Armor, painted white on the outside, multicolor on the inside		\$6,302
750631010	Titan Armor, custom paint on the outside, multicolor on the inside		\$7,623

Bedliner & Rock Guard Options			
https://autocrane.us/product-category/accessories/coatings/			
Part Number	Description	List Price	Installed List Price
717510001	Bedliner - Floor and Sides Only		\$1,605
717510003	Bedliner - Floor, Sides and Compartment Tops		\$1,956
717510005	Bedliner - Workbench bumper		\$630

Boom Support			
Part Number	Description	List Price	Installed List Price
715064020	Boom support (EHC-3.2 & EHC-4 cranes)	\$438	
560195015	Boom support (EHC-5 – HC-14 cranes)	\$684	
716858000	Install boom support (Add to part number above)		Add \$159

Work Light Options			
Part Number	Description	List Price	Installed List Price
475300034	LED Floodlight, square, 1600 lumens	\$110	
716861000	Install work lights (Add to part number above)		Add \$213

E-Track			
Part Number	Description	List Price	Installed List Price
739098010	E-track – single level (along the inside of the bed)		\$481
739098000	E-track – two level (along the inside of the bed)		\$952

Propane Body - Titan 38 - Accessories

Bodies

Compartment Hook Options

Part Number	Description	List Price	Installed List Price
750613000	Oxygen / acetylene hook assembly		\$46.50
750614000	J-hook		\$21.25
750807000	Chain hook assembly		\$86.50
753241000	Swivel J-hook		\$40

Master Locking Systems

Part Number	Description	List Price	Installed List Price
738695010	Master lock system stainless/steel – Standard body - LSC		\$686
738695011	Master lock system stainless/steel – LS Tall body – LSC		\$686
738695012	Master lock system – Standard body - RSC		\$686

Pipe Holder

Part Number	Description	List Price	Installed List Price
739040000	Pipe rack kit	\$553	
716875000	Install pipe rack kit (Add to part number above)		Add \$266

Fuel & Fuel/DEF Cut-Outs

Part Number	Description	List Price	Installed List Price
739188070	Fuel / DEF filler cut-outs (2 cut-outs)		\$357
739188080	Fuel cutout RAM (1 cut-out)		\$197
739188081	Fuel cutout International & Chevy (1 cut-out)		\$197
739188075	Fuel only cutout (Ford)		\$185
739320354	DEF filler bracket		\$169

Body Installation Kits

Part Number	Description	List Price	Installed List Price
560579000	Body installation kit (for Ford F-350, F-450, and F-550 chassis)	\$587	
560579002	Body installation kit (for 2021 diesel F-550 & F-600 chassis)	\$961	
560579100	Body installation kit (for RAM chassis)	\$584	
560581000	Body installation kit (for International/Chevy chassis)	\$212	

Body Installation Charge

Part Number	Description	List Price	Installed List Price
716851000	Install body on Class 5 and below chassis, includes mud flaps (Add to body part number if upfit at factory)		\$5,552

Propane Body - Titan 38 - Accessories

Bodies

Crane Installation Charges			
Part Number	Description	List Price	Installed List Price
750678000	Install 2003, 3203, or 4004EH crane (Add to crane part number if upfit at factory)		\$936
750679000	Install hydraulic crane (Add to crane part number if upfit at factory)		\$1,433
360870000	Install 5005EH or 6006EH crane - includes battery and battery box (Add to crane part number if upfit at factory)		\$1,543

PTO (For Factory Intalls Only)			
Part Number	Description	List Price	Installed List Price
736997000	PTO and installation for an automatic transmission		\$5,128
736998000	PTO and installation for a manual transmission		\$4,150

Equipment			
Part Number	Description	List Price	Installed List Price
750831000	ICC safety kit (Complies with FMVH Safety Standard No. 125, Sec. 571.125)	\$90.75	
750061000	Fire extinguisher (Complies with FMCS Regs. Sec. 393.95 – classification 2 – A:10-B:C unit)	\$174	
750681000	Backup safety alarm		\$330

Hydraulic Reservoirs			
Part Number	Description	List Price	Installed List Price
480420100	15-gallon reservoir with return filter, sight gauge, and suction strainer	\$671	
751095070	36-gallon bulkhead reservoir to fit inside 50" wide cargo area with return filter and sight gauge	\$1,444	
340169400	Oil Cooler Kit (for use when oil temperature exceeds 180°, or application prevents install of recommended 2x total GPM tank capacity, or crane and/or compressor is operated in continuous duty applications)	\$2,970	

Spring Reinforcement			
Part Number	Description	List Price	Installed List Price
736995001	Spring reinforcement		\$2,321

Propane Body - Titan 38 - Accessories

Bodies

Hydraulic Installation Kits			
Part Number	Description	List Price	Installed List Price
367223200	Hydraulic Hose Kit for Ford F550 (Must also include the 560588010)	\$1,785	
367223210	Hydraulic Hose Kit for RAM - Single Pump (Must also include the 560588010)	\$1,792	
367223300	Hydraulic Hose Kit for International/Chevy - (Must also include the 560588010)	\$1,013	
560588010	Priority flow valve w/ relief (Add to hose kit part number if upfit at factory)	\$1,090	
738489000	Install hydraulic components (Add to hose kit part number if upfit at factory)		Add \$1,369

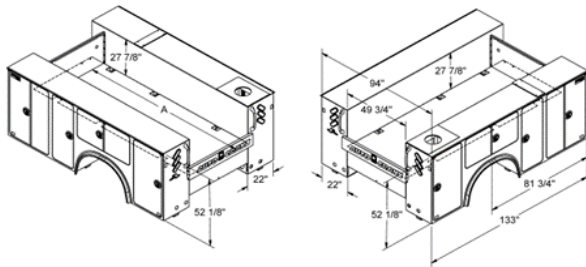
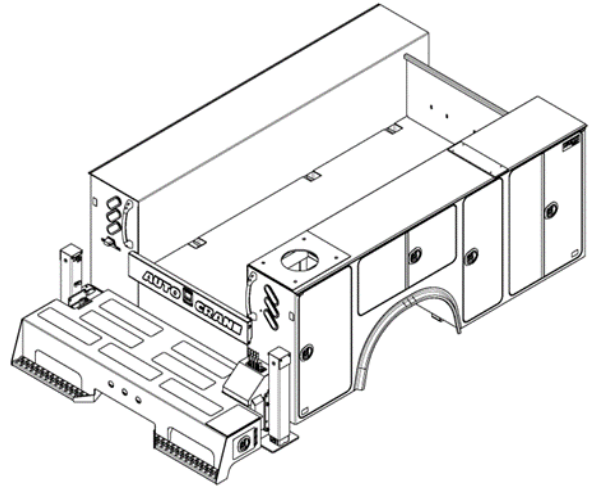
Speed Control			
Part Number	Description	List Price	Installed List Price
480533000	Engine start / stop	\$177	
480535000	Engine start / stop (Includes above part number)		\$1,167
480534000	Auxiliary relay kit	\$139	
480536000	Auxiliary relay kit (Includes above part number)		\$950

Install Chassis Supplied Back-Up Camera			
Part Number	Description	List Price	Installed List Price
725692010	Install back-up camera that comes with chassis, RAM		\$110
725692020	Install back-up camera that comes with chassis, Ford		\$110
739409620	Install back-up camera that comes with chassis, International/Chevy		\$225

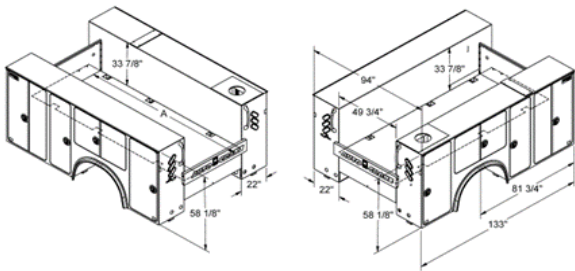
Titan 60 - 11' Body

(82" Body-to-Axle, CA Chassis Dependent)

- 26,000 GVWR
- One-piece 10 gauge side-pack design
- 12 gauge treadplate on tops and cargo area
- Three angled oval lights on the rear of the body
- Integral crane reinforcement up to 60,000 ft. lbs.
- For cranes HC-9, HC-10, and HC-12s
- Large grab handles
- Fenderette
- Flush door panels with bulb seal gasket
- Three-point latching system
- Rugged, durable interlocking channel frame
- Rounded door corners



Part Number	Description	List Price
760322001	Titan 60-11' – 52" Tall – RS Crane	\$31,022



Part Number	Description	List Price
760322002	Titan 60-11' – 58" Tall – RS Crane	\$31,449

Length for "A" Dimension – Standard Bulkhead 131 5/8" – Recessed Bulkhead 123"

* Call Factory for quotes on left side crane bodies and accessories.

**** Body does not come with a wiring harness. Wiring harness comes with Titan Connect kit or add part number 560106003.**

Titan 60 - 11' Body Accessories

Bodies

Bulkheads (Choose one with order)			
Part Number	Description	List Price	Installed List Price
739406051	Standard bulkhead (flush with the front of the body)		\$283
739406001	Recessed bulkhead (recessed back from the front of the body)		\$283

Shelving			
Part Number	Description	List Price	Installed List Price
560535000	Shelving package with 11 adjustable shelves, 1 shelf with parts dividers, 1 shelf with book dividers, 3 material hooks		\$2,775
560535001	Shelving for front compartment left side or right side - 1 shelf		\$255
560535002	Shelving for mid compartment left side or right side – 3 shelves		\$449
560535003	Shelving for horizontal compartment right side - 1 shelf with tall dividers		\$393
560535004	Shelving for horizontal compartment left side - 1 shelf with short dividers		\$385
560535006	Shelving for rear compartment opposite crane box - 3 shelves		\$529
560535007	Shelving for crane compartment – 1 shelf		\$230

Toolboxes			
Part Number	Description	List Price	Installed List Price
760385100	Front compartment – Aluminum Toolbox (2) 7", (2) 5", (5) 3"	\$3,505	
760585200	Mid compartment – Aluminum Toolbox (3) 7", (2) 5", (4) 3"	\$3,154	
739380204	Mid compartment – Bolt Bin (18 bin)	\$2,339	
760585301	Horizontal compartment – Aluminum Toolbox (3) 3"	\$2,514	
760585302	Horizontal compartment – Aluminum Toolbox (4) 3"	\$1,908	
760585303	Horizontal compartment – Aluminum Toolbox (5) 3"	\$2,140	
739380305	Horizontal compartment – Bolt Bin (15 bin)	\$2,209	
760585200	Rear compartment – Aluminum Toolbox (3) 7", (2) 5", (4) 3"	\$3,154	
716862000	Install toolbox (Add to part number above for each toolbox)		Add \$398

Interior Lighting Options			
https://autocrane.us/product-category/accessories/lights/			
Part Number	Description	List Price	Installed List Price
475300126	Full Length LED interior compartment lighting for 52" tall bodies (36" vertical & 18" horizontal, 2 per double door compartments and 1 per single door compartments)	\$1,948	
475300138	Full Length LED interior compartment lighting for 58" tall bodies (48" vertical & 18" horizontal, 2 per double door compartments and 1 per single door compartments)	\$1,247	
716869000	Install interior lights (Add to part number above)		Add \$961
716869001	Install compartment lighting, Titan Connect (Add to part number above if Titan Connect is also being installed)	Add	\$501

Underbody Lighting			
Part Number	Description	List Price	Installed List Price
475300420	Underbody Lighting , Kit, 11' Bodies		\$1,515

Boom Support			
Part Number	Description	List Price	Installed List Price
715064020	Boom support (EHC-3.2 & EHC-4 cranes)	\$438	
560195015	Boom support (EHC-5 – HC-14 cranes)	\$684	
716858000	Install boom support (Add to part number above)		Add \$159

Master Locking Systems			
Part Number	Description	List Price	Installed List Price
560205010	Master lock system stainless/steel		\$1,381

Oxygen/Acetylene Compartment Options			
Part Number	Description	List Price	Installed List Price
736233000	Three oxygen/acetylene bottle holders with hose holder (for standard or tall compartment)		\$602
560483000	Oxy divider / shelving package for front compartment (fits 58" tall front compartment)		\$1,006
560544000	Mid compartment oxygen/acetylene holder (2 bottles)		\$596
736373000	Mid compartment oxy/acet bottle holder (2 bottle, clamp style)		\$396
560206000	Drop-well Assembly (2" deep)		\$467
560258000	Drop-well assembly (6" deep)		\$614
560446000	Mid compartment drop-well (2" deep)		\$535

Outriggers			
Part Number	Description	List Price	Installed List Price
715321030	Shipping tube, to be ordered when outriggers are not installed		N/C
760431000	Full manual outriggers, Right Side Crane	\$7,900	
560570101	Full hydraulic outriggers, single slide - Right Side Crane*	\$8,904	
772020001	Full hydraulic outriggers – double slide - Right Side Crane	\$11,232	
772020010	Full hydraulic outriggers - remote valve bank - double slide - Right Side	\$12,812	
716857000	Install outrigger (Add to part number above)		Add \$344

Notes:

* The single slide outriggers have less than 100% capacity on truck sides to maintain stability

Bumpers & Accessories			
Part Number	Description	List Price	Installed List
772080000	30" workbench bumper for manual outriggers only (vise plate, storage area and integrated step) - Right Side Crane	\$3,574	
560460000	24" workbench bumper (vise plate, storage area and integrated step) – Right Side Crane (designed for single slide outrigger)	\$3,795	
560570115	30" workbench bumper (vise plate, storage area with drop down doors and integrated step) – Right Side Crane (designed for single slide outrigger)	\$5,073	
772059000	30" workbench bumper (vise plate, storage area and integrated step) – Right Side Crane (designed for double slide outrigger)	\$3,999	
772059006	30" workbench bumper, for remote mount valve bank - Right Side Crane (designed for double slide outrigger)	\$4,534	
716856000	Install bumper mounting plates (Add to part number above)		Add \$185
716856001	Install bumper (Add to bumper part number if it is a factory upfit, includes installing bumper mounting plates)		Add \$375
560538000	Reinforced bumper overlay (for 24" bumper)		\$1,504
752311000	Additional vise plate for bumpers (3/8" X 10" X 15")	\$76	
750509000	Additional vise plate installed (Includes above part number)		\$226
717530101	Wilton 6" Vise	\$944	
717530011	Install vise, tapped plate (add to vise part number above)		Add \$306
717530002	Wilton 8" Vise		\$1,636

Receiver Hitch			
Part Number	Description	List Price	Installed List Price
760365010	Receiver hitch for 30" bumper (double slide outriggers)		\$1,010
760365025	Receiver hitch for 30" bumper (single slide outriggers)		\$1,181
560456010	Receiver hitch for 24" bumper (single slide outriggers)		\$1,017

Trailer Plugs			
Part Number	Description	List Price	Installed List Price
739167000	Trailer socket – heavy duty with round pins (SAE J560)	\$39.50	
739167005	Trailer wiring socket – 7 way spade	\$32.75	
716861400	Install trailer plug (Add to part number above)		Add \$430

Titan 60 - 11' Body Accessories

Bodies

Paint			
https://autocrane.us/product-category/accessories/coatings/			
Part Number	Description	List Price	Installed List Price
750631000	(Auto Crane White) Painted on the outside and inside of the body		\$2,625
716881010	(Auto Crane White) Painted on the outside of the body and multicolor coating on the inside of the compartments		\$3,096
716863000	(Auto Crane White) -painted inside compartments only		\$934
716881020	Coating, multicolor - inside compartments only		\$1,493
900500000	Custom Paint		\$3,636

Titan Armor (In place of Paint)			
https://autocrane.us/product/titan-armor/			
Part Number	Description	List Price	Installed List Price
750631012	Titan Armor, painted white on the outside, multicolor on the inside		\$6,302
750631010	Titan Armor, custom paint on the outside, multicolor on the inside		\$7,623

Bedliner & Rock Guard Options			
https://autocrane.us/product-category/accessories/coatings/			
Part Number	Description	List Price	Installed List Price
717510001	Bedliner - Floor and Sides Only		\$1,605
717510003	Bedliner - Floor, Sides and Compartment Tops		\$1,956
717510005	Bedliner - Workbench bumper		\$630
717510006	Arctic Package (rock guard coating for paint protection)		\$1,498
717510008	Bedliner - Front of Body		\$840
739408011	Rock guard installation, 21" x 21" aluminum diamond plated		\$568

Light Bars & Headache Racks			
Part Number	Description	List Price	Installed List Price
739317845	Light bar – 17 9/16" tall – Ford chassis		\$1,106
739317885	Light bar – 27" tall – Freightliner, Kenworth & International chassis		\$1,105
739317865	Light bar – 33" tall – Peterbilt & Hino chassis		\$1,104
560710106	Headache rack, Titan 38-85, 24 ½" tall		\$2,066

Work Light Options			
Part Number	Description	List Price	Installed List Price
475300034	LED Floodlight, square, 1600 lumens	\$110	
716861000	Install work lights (Add to part number above)		Add \$213

Titan 60 - 11' Body Accessories

Bodies

Hand Rail Option (See pictures in next section)			
Part Number	Description	List Price	Installed List Price
560545100	Hand rail (rear of body to bumper, replaces grab handle - left)	\$425	
560545104	Hand rail (rear of body to bumper, replaces grab handle - right)	\$422	
560545004	Hand rail, from top left rear of body to bumper	\$470	
772061018	Install hand rail (Add to part number above)		Add \$173

Compartment Hook Options			
Part Number	Description	List Price	Installed List Price
750613000	Oxygen / acetylene hook assembly		\$46.50
750614000	J-hook		\$21.25
750807000	Chain hook assembly		\$86.50
753241000	Swivel J-hook		\$40

Titan Trax Struts (Full length mounting struts)			
Part Number	Description	List Price	Installed List Price
739185085	Titan Trax, Titan 50/60 - 11', same height full length of body, one side, opposite crane box		\$580
739185037	Mounting plate, RC40 compressor		\$480
739185055	Mounting plate, AC40 and RS80 compressor		\$546
739185056	Mounting plate, RS85 compressor		\$538
739185057	Blank plate mounting kit, Titan 38-85		\$459
739185065	Mounting plate, EnPak and reservoir		\$947
739185070	Mountng plate, Vanair I300		\$871
739185075	Mounting plate, VMAC H40		\$483
739185088	Mounting plate, Miller Bobcat 250 and Trailblazer 325		\$411

Sliding Tops			
Part Number	Description	List Price	Installed List Price
Factory Quote	Lockable sliding top - Titan 60 - 84 CA	Factory Quote	
900504000	Paint sliding top (Auto Crane White)		\$908
900504001	Paint sliding top custom color		\$1,457
716884000	Install sliding top (Add to part number above)		Add \$1,950

Salvage System			
Part Number	Description	List Price	Installed List Price
601000008	Salvage system, integrated, single tank, 60 gal	\$5,177	

Titan 60 - 11' Body Accessories

Bodies

Body Installation Kits			
Part Number	Description	List Price	Installed List Price
560581000	Body installation kit	\$212	

Body Installation Charge (to be used with Titan Connect)			
Part Number	Description	List Price	Installed List Price
716870100	Install body on Class 6 & 7 chassis, includes mudflaps (Add to body part number if upfit at factory)		\$4,943

Body Installation Charge (when Titan Connect is not used)			
Part Number	Description	List Price	Installed List Price
716851001	Install body on Class 5 and below chassis, includes mud flaps (Add to body part number if upfit at factory)		\$6,346

Crane Installation Charges			
Part Number	Description	List Price	Installed List Price
750678000	Install 2003, 3203, or 4004EH crane (Add to crane part number if upfit at factory)		\$936
750679000	Install hydraulic crane (Add to crane part number if upfit at factory)		\$1,433
360870000	Install 5005EH or 6006EH crane - includes battery and battery box (Add to crane part number if upfit at factory)		\$1,543

Equipment			
Part Number	Description	List Price	Installed List Price
750831000	ICC safety kit (Complies with FMVH Safety Standard No. 125, Sec. 571.125)	\$90.75	
750061000	Fire extinguisher (Complies with FMCS Regs. Sec. 393.95 – classification 2 – A:10-B:C unit)	\$174	
750681000	Backup safety alarm		\$330

PTO (For Factory Intalls Only)			
Part Number	Description	List Price	Installed List Price
736997000	PTO and installation for an automatic transmission		\$5,128
736998000	PTO and installation for a manual transmission		\$4,150

Spring Reinforcement			
Part Number	Description	List Price	Installed List Price
736995001	Spring reinforcement		\$2,321

Titan 60 - 11' Body Accessories

Bodies

Hydraulic Reservoirs			
Part Number	Description	List Price	Installed List Price
480420100	15-gallon reservoir with return filter, sight gauge, and suction strainer	\$671	
751095070	36-gallon bulkhead reservoir to fit inside 50" wide cargo area with return filter and sight gauge	\$1,444	
340169400	Oil Cooler Kit (for use when oil temperature exceeds 180°, or application prevents install of recommended 2x total GPM tank capacity, or crane and/or compressor is operated in continuous duty applications)	\$2,970	

Hydraulic Installation Kits			
Part Number	Description	List Price	Installed List Price
760485000	Hose kit for Titan 60	\$1,423	
738489000	Install hydraulic components (Add to hose kit part number if upfit at factory)		Add \$1,369

Speed Control (when Titan Connect is not used)			
Part Number	Description	List Price	Installed List Price
717535000	Relay Box Assembly	\$1,400	
716893001	Install relay box (Add to relay box assembly part number if upfit at factory)		Add \$1,471
717515000	Power Switch Control Panel Assembly	\$646	
716893002	Install control panel (Add to control panel assembly part number if upfit at factory)		Add \$1,031
717514000	Stand for Control Panel (include with above part number if mounting in cab of chassis)	\$384	

Wiring Harness (select when Titan Connect is not used)			
Part Number	Description	List Price	Installed List Price
560106003	Wiring harness	\$884	

Compressor Adapter Harness (use with Titan Connect)			
Part Number	Description	List Price	Installed List Price
755501013	Adapter harness for RC40 compressor	\$54.50	
475300367	Adapter harness for RC40-L compressor	\$67.75	
475300343	Adapter harness for VMAC	\$67.75	
475300367	Adapter harness for RS85	\$67.75	

Titan 60 - 11' Body Accessories

Bodies

Titan Connect			
Part Number	Description	List Price	Installed List Price
475300350	Titan Connect, Kit, 11' bodies (comes with harness and keypad)	\$2,774	
475300360	Titan Connect, Kit, 11' bodies, Installed (Includes above part number)		\$4,451
475300361	Dealer Titan Connect kit (each upfit facility will need one of these for the programming of Titan Connect)	\$1,622	

Chassis Adapter Harness (use with Titan Connect)			
Part Number	Description	List Price	Installed List Price
475301355	Adapter harness, tail light, Freightliner	\$115	
475301353	Adapter harness, tail light, Peterbilt	\$70	
475300366	Adapter harness, tail light, Mack	\$102	
475301357	Adapter harness, tail light, International	\$102	

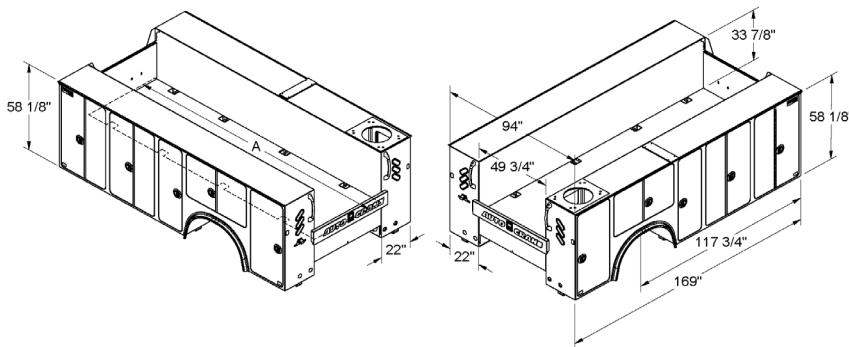
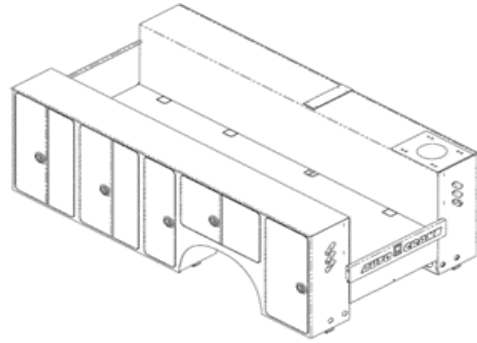
Additional Keypad for Cab (used with Titan Connect)			
Part Number	Description	List Price	Installed List Price
475301356	Keypad and mount for cab	\$708	

Power On-Demand (used with Titan Connect only)			
Part Number	Description	List Price	Installed List Price
475300365	Power On-Demand		\$2,100

Titan 60 - 14' Body

(118" Body-to-Axle, CA Chassis Dependent)

- 26,000 GVWR
- One-piece 10 gauge side-pack design
- 12 gauge treadplate on tops and cargo area
- Three angled oval lights on the rear of the body
- Integral crane reinforcement up to 60,000 ft. lbs.
- For cranes HC-9, HC-10, and HC-12s
- Large grab handles
- Fenderette
- Flush door panels with bulb seal gasket
- Three-point latching system
- Rugged, durable interlocking channel frame
- Rounded door corners



Part Number	Description	List Price
560322001	Titan 60-14' – All Compartments 58" Tall – RS Crane	\$34,767

Length for "A" Dimension – Standard Bulkhead 167 5/8" – Recessed Bulkhead 159"

* Call Factory for quotes on left side crane bodies and accessories.

**** Body does not come with a wiring harness. Wiring harness comes with Titan Connect kit or add part number 560106003.**

Titan 60 - 14' Body Accessories

Bodies

Bulkheads (Choose one with order)			
Part Number	Description	List Price	Installed List Price
739406051	Standard bulkhead (flush with the front of the body)		\$283
739406001	Recessed bulkhead (recessed back from the front of the body)		\$283

Shelving			
Part Number	Description	List Price	Installed List Price
760537000	Shelving package with 13 adjustable shelves, 1 shelf with parts dividers, 1 shelf with book dividers, 3 material hooks		\$3,164
560535001	Shelving for front compartment left side or right side - 1 shelf		\$255
760537001	Shelving for mid compartment left side or right side – 3 shelves		\$396
560535003	Shelving for horizontal compartment – right side - 1 shelf with tall dividers		\$393
560535004	Shelving for horizontal compartment left side - 1 shelf with short dividers		\$385
560535006	Shelving for rear compartment opposite crane box - 3 shelves		\$529
560535007	Shelving for crane compartment – 1 shelf		\$230

Toolboxes			
Part Number	Description	List Price	Installed List Price
760385100	Front compartment – Aluminum Toolbox (2) 7", (2) 5", (5) 3"	\$3,505	
760585200	Mid compartment – Aluminum Toolbox (3) 7", (2) 5", (4) 3"	\$3,154	
739380204	Mid compartment – Bolt Bin (18 bin)	\$2,339	
760585301	Horizontal compartment – Aluminum Toolbox (3) 3"	\$2,514	
760585302	Horizontal compartment – Aluminum Toolbox (4) 3"	\$1,908	
760585303	Horizontal compartment – Aluminum Toolbox (5) 3"	\$2,140	
739380305	Horizontal compartment – Bolt Bin (15 bin)	\$2,209	
760585200	Rear compartment – Aluminum Toolbox (3) 7", (2) 5", (4) 3"	\$3,154	
716862000	Install toolbox (Add to part number above for each toolbox)		Add \$398

Interior Lighting Options			
https://autocrane.us/product-category/accessories/lights/			
Part Number	Description	List Price	Installed List Price
475300145	Full Length LED interior compartment lighting for 58" tall full length bodies (1) 48" light per vertical & 18" horizontal & crane compartment	\$1,191	
716869000	Install interior lighting (Add to part number above)		Add \$961

Titan 60 - 14' Body Accessories

Bodies

Underbody Lighting			
Part Number	Description	List Price	Installed List Price
475300380	Underbody Lighting , Kit, 14' Bodies		\$1,726

Boom Support			
Part Number	Description	List Price	Installed List Price
715064020	Boom support (EHC-3.2 & EHC-4 cranes)	\$438	
560195015	Boom support (EHC-5 – HC-14 cranes)	\$684	
716858000	Install boom support (Add to part number above)		Add \$159

Master Locking Systems			
Part Number	Description	List Price	Installed List Price
760570000	Master lock system stainless/steel – 58" full length Installed		\$1,702

Oxygen/Acetylene Compartment Options			
Part Number	Description	List Price	Installed List Price
736233000	Three oxygen/acetylene bottle holders with hose holder (for standard or tall compartment)		\$602
560483000	Oxy divider / shelving package for front compartment (fits 58" tall front compartment)		\$1,006
560544000	Mid compartment oxygen/acetylene holder (2 bottles)		\$596
736373000	Mid compartment oxy/acet bottle holder (2 bottle, clamp style)		\$396
560206000	Drop-well Assembly (2" deep)		\$467
560258000	Drop-well assembly (6" deep)		\$614
560446000	Mid compartment drop-well (2" deep)		\$535

Outriggers			
Part Number	Description	List Price	Installed List Price
715321030	Shipping tube, to be ordered when outriggers are not installed		N/C
760431000	Full manual outriggers, Right Side Crane	\$7,900	
560570101	Full hydraulic outriggers, single slide - Right Side Crane*	\$8,904	
772020001	Full hydraulic outriggers – double slide - Right Side Crane	\$11,232	
772020010	Full hydraulic outriggers - remote valve bank - double slide - Right Side Crane	\$12,812	
716857000	Install outrigger (Add to part number above)		Add \$344

Notes:

* The single slide outriggers have less than 100% capacity on truck sides to maintain stability

Titan 60 - 14' Body Accessories

Bodies

Bumpers & Accessories			
Part Number	Description	List Price	Installed List
772080000	30" workbench bumper for manual outriggers only (vise plate, storage area and integrated step) - Right Side Crane	\$3,574	
560460000	24" workbench bumper (vise plate, storage area and integrated step) – Right Side Crane (designed for single slide outrigger)	\$3,795	
560570115	30" workbench bumper (vise plate, storage area with drop down doors and integrated step) – Right Side Crane (designed for single slide outrigger)	\$5,073	
772059000	30" workbench bumper (vise plate, storage area and integrated step) – Right Side Crane (designed for double slide outrigger)	\$3,999	
772059006	30" workbench bumper, for remote mount valve bank - Right Side Crane (designed for double slide outrigger)	\$4,534	
716856000	Install bumper mounting plates (Add to part number above)	Add	\$185
716856001	Install bumper (Add to bumper part number if it is a factory upfit, includes installing bumper mounting plates)	Add	\$375
560538000	Reinforced bumper overlay (for 24" bumper)		\$1,504
752311000	Additional vise plate for bumpers (3/8" X 10" X 15")	\$76	
750509000	Additional vise plate installed (Includes above part number)		\$226
717530101	Wilton 6" Vise	\$944	
717530011	Install vise, tapped plate (add to vise part number above)	Add	\$306
717530002	Wilton 8" Vise		\$1,636

Receiver Hitch			
Part Number	Description	List Price	Installed List Price
760365010	Receiver hitch for 30" bumper (double slide outriggers)		\$1,010
760365025	Receiver hitch for 30" bumper (single slide outriggers)		\$1,181
560456010	Receiver hitch for 24" bumper (single slide outriggers)		\$1,017

Trailer Plugs			
Part Number	Description	List Price	Installed List Price
739167000	Trailer socket – heavy duty with round pins (SAE J560)	\$39.50	
739167005	Trailer wiring socket – 7 way spade	\$32.75	
716861400	Install trailer plug (Add to part number above)	Add	\$430

Titan 60 - 14' Body Accessories

Bodies

Paint			
https://autocrane.us/product-category/accessories/coatings/			
Part Number	Description	List Price	Installed List Price
716881000	(Auto Crane White) Painted on the outside and inside of the body		\$3,050
716881030	(Auto Crane White) Painted on the outside of the body and multicolor coating on the inside of the compartments		\$3,601
716863000	(Auto Crane White) -painted inside compartments only		\$934
716881040	Coating, multicolor - inside compartments only		\$1,575
900502000	Custom Paint		\$4,502

Titan Armor (In place of Paint)			
https://autocrane.us/product/titan-armor/			
Part Number	Description	List Price	Installed List Price
750631012	Titan Armor, painted white on the outside, multicolor on the inside		\$6,302
750631010	Titan Armor, custom paint on the outside, multicolor on the inside		\$7,623

Bedliner & Rock Guard Options			
https://autocrane.us/product-category/accessories/coatings/			
Part Number	Description	List Price	Installed List Price
717510002	Bedliner - Floor and Sides Only		\$1,773
717510004	Bedliner - Floor, Sides and Compartment Tops		\$2,154
717510005	Bedliner - Workbench bumper		\$630
717510007	Arctic Package (rock guard coating for paint protection)		\$1,623
717510008	Bedliner - Front of Body		\$840
739408011	Rock guard installation, 21" x 21" aluminum diamond plated		\$568

Light Bars & Headache Racks			
Part Number	Description	List Price	Installed List Price
739317845	Light bar – 17 9/16" tall – Ford chassis		\$1,106
739317885	Light bar – 27" tall – Freightliner, Kenworth & International chassis		\$1,105
739317865	Light bar – 33" tall – Peterbilt & Hino chassis		\$1,104
560710106	Headache rack, Titan 38-85, 24 1/2" tall		\$2,066

Work Light Options			
Part Number	Description	List Price	Installed List Price
475300034	LED Floodlight, square, 1600 lumens	\$110	
716861000	Install work lights (Add to part number above)		Add \$213

Titan 60 - 14' Body Accessories

Bodies

Hand Rail Option (See pictures in next section)			
Part Number	Description	List Price	Installed List Price
560545100	Hand rail (rear of body to bumper, replaces grab handle - left)	\$425	
560545104	Hand rail (rear of body to bumper, replaces grab handle - right)	\$422	
560545004	Hand rail, from top left rear of body to bumper	\$470	
772061018	Install hand rail (Add to part number above)		Add \$173

Compartment Hook Options			
Part Number	Description	List Price	Installed List Price
750613000	Oxygen / acetylene hook assembly		\$46.50
750614000	J-hook		\$21.25
750807000	Chain hook assembly		\$86.50
753241000	Swivel J-hook		\$40

Titan Trax Struts (Full length mounting struts)			
Part Number	Description	List Price	Installed List Price
739185115	Titan Trax, Titan 50-85 - 14', same height full length of body, one side, opposite crane box		\$627
739185037	Mounting plate, RC40 compressor		\$480
739185055	Mounting plate, AC40 and RS80 compressor		\$546
739185056	Mounting plate, RS85 compressor		\$538
739185057	Blank plate mounting kit, Titan 38-85		\$459
739185065	Mounting plate, EnPak and reservoir		\$947
739185070	Mountng plate, Vanair I300		\$871
739185075	Mounting plate, VMAC H40		\$483
739185088	Mounting plate, Miller Bobcat 250 and Trailblazer 325		\$411

Sliding Tops			
Part Number	Description	List Price	Installed List Price
Factory Quote	Lockable sliding top - Titan 60 - 120" CA	Factory Quote	
900504000	Paint sliding top (Auto Crane White)		\$908
900504001	Paint sliding top custom color		\$1,457
716884001	Install sliding top (Add to part number above)		Add \$1,950

Salvage System			
Part Number	Description	List Price	Installed List Price
601000008	Salvage system, integrated, single tank, 60 gal	\$5,177	

Titan 60 - 14' Body Accessories

Bodies

Body Installation Kits			
Part Number	Description	List Price	Installed List Price
560581000	Body installation kit	\$212	

Body Installation Charge (to be used with Titan Connect)			
Part Number	Description	List Price	Installed List Price
716870100	Install body on Class 6 & 7 chassis, includes mudflaps (Add to body part number if upfit at factory)		\$4,943

Body Installation Charge (when Titan Connect is not used)			
Part Number	Description	List Price	Installed List Price
716851001	Install body on Class 5 and below chassis, includes mud flaps (Add to body part number if upfit at factory)		\$6,346

Crane Installation Charges			
Part Number	Description	List Price	Installed List Price
750678000	Install 2003, 3203, or 4004EH crane (Add to crane part number if upfit at factory)		\$936
750679000	Install hydraulic crane (Add to crane part number if upfit at factory)		\$1,433
360870000	Install 5005EH or 6006EH crane - includes battery and battery box (Add to crane part number if upfit at factory)		\$1,543

Equipment			
Part Number	Description	List Price	Installed List Price
750831000	ICC safety kit (Complies with FMVH Safety Standard No. 125, Sec. 571.125)	\$90.75	
750061000	Fire extinguisher (Complies with FMCS Regs. Sec. 393.95 – classification 2 – A:10-B:C unit)	\$174	
750681000	Backup safety alarm		\$330

PTO (For Factory Intalls Only)			
Part Number	Description	List Price	Installed List Price
736997000	PTO and installation for an automatic transmission		\$5,128
736998000	PTO and installation for a manual transmission		\$4,150

Spring Reinforcement			
Part Number	Description	List Price	Installed List Price
736995001	Spring reinforcement		\$2,321

Titan 60 - 14' Body Accessories

Bodies

Hydraulic Reservoirs			
Part Number	Description	List Price	Installed List Price
480420100	15-gallon reservoir with return filter, sight gauge, and suction strainer	\$671	
751095070	36-gallon bulkhead reservoir to fit inside 50" wide cargo area with return filter and sight gauge	\$1,444	
340169400	Oil Cooler Kit (for use when oil temperature exceeds 180°, or application prevents install of recommended 2x total GPM tank capacity, or crane and/or compressor is operated in continuous duty applications)	\$2,970	

Hydraulic Installation Kits			
Part Number	Description	List Price	Installed List Price
760485001	Hose kit for Titan 60	\$1,516	
738489000	Install hydraulic components (Add to hose kit part number if upfit at factory)		Add \$1,369

Speed Control (when Titan Connect is not used)			
Part Number	Description	List Price	Installed List Price
717535000	Relay Box Assembly	\$1,400	
716893001	Install relay box (Add to relay box assembly part number if upfit at factory)		Add \$1,471
717515000	Power Switch Control Panel Assembly	\$646	
716893002	Install control panel (Add to control panel assembly part number if upfit at factory)		Add \$1,031
717514000	Stand for Control Panel (include with above part number if mounting in cab of chassis)	\$384	

Wiring Harness (select when Titan Connect is not used)			
Part Number	Description	List Price	Installed List Price
560106003	Wiring harness	\$884	

Compressor Adapter Harness (select with Titan Connect)			
Part Number	Description	List Price	Installed List Price
755501013	Adapter harness for RC40 compressor	\$54.50	
475300367	Adapter harness for RC40-L compressor	\$67.75	
475300343	Adapter harness for VMAC	\$67.75	
475300367	Adapter harness for RS85	\$67.75	

Titan 60 - 14' Body Accessories

Bodies

Titan Connect			
Part Number	Description	List Price	Installed List Price
475301371	Titan Connect, Kit, 14' bodies (comes with harness and keypad)	\$3,592	
475301360	Titan Connect, Kit, 14' bodies, Installed (Includes above part number)		\$5,297
475300361	Dealer Titan Connect kit (each upfit facility will need one of these for the programming of Titan Connect)	\$1,622	

Chassis Adapter Harness (select with Titan Connect)			
Part Number	Description	List Price	Installed List Price
475301355	Adapter harness, tail light, Freightliner	\$115	
475301353	Adapter harness, tail light, Peterbilt	\$70	
475300366	Adapter harness, tail light, Mack	\$102	
475301357	Adapter harness, tail light, International	\$102	

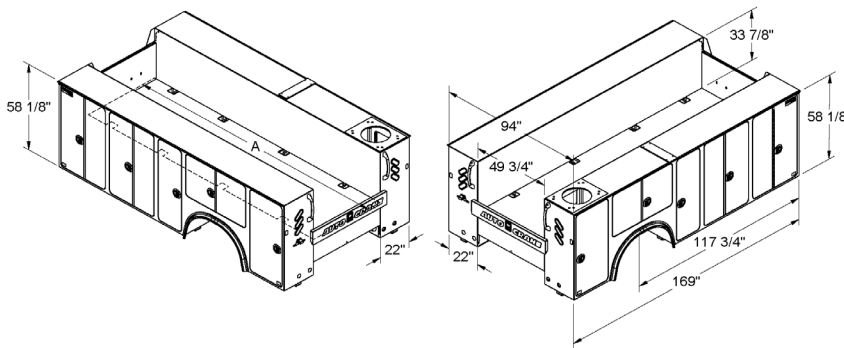
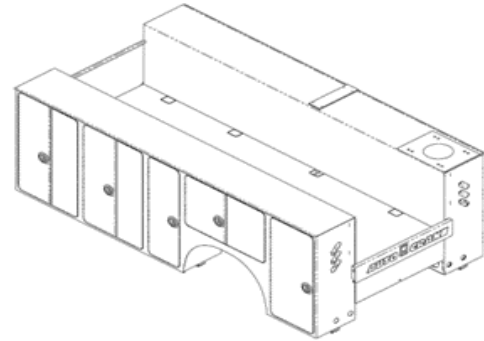
Additional Keypad for Cab (used with Titan Connect)			
Part Number	Description	List Price	Installed List Price
475301356	Additional Keypad and mount for cab	\$708	

Power On-Demand (used with Titan Connect only)			
Part Number	Description	List Price	Installed List Price
475300365	Power On-Demand		\$2,100

Titan 85 - 14' Body

(118" Body-to-Axle, CA Chassis Dependent)

- 33,000 GVWR
- One-piece 10 gauge side-pack design
- 12 gauge treadplate on tops and cargo area
- Three angled oval lights on the rear of the body
- Integral crane reinforcement up to 85,000 ft. lbs.
- For cranes HC-12 and HC-14
- Large grab handles
- Fenderette
- Flush door panels with bulb seal gasket
- Three-point latching system
- Rugged, durable interlocking channel frame
- Rounded door corners



Part Number	Description	List Price
772322001	Titan 85-14' –All Compartments 58" Tall – RS Crane	\$37,541

Length for "A" Dimension – Standard Bulkhead 167 5/8" – Recessed Bulkhead 159"

* Call Factory for quotes on left side crane bodies and accessories.

**** Body does not come with a wiring harness. Wiring harness comes with Titan Connect kit or add part number 560106003.**

Titan 85 - 14' Body Accessories

Bodies

Bulkheads (Choose one with order)			
Part Number	Description	List Price	Installed List Price
739406051	Standard bulkhead (flush with the front of the body)		\$283
739406001	Recessed bulkhead (recessed back from the front of the body)		\$283

Shelving			
Part Number	Description	List Price	Installed List Price
760537000	Shelving package with 13 adjustable shelves, 1 shelf with parts dividers, 1 shelf with book dividers, 3 material hooks		\$3,164
560535001	Shelving for front compartment left side or right side - 1 shelf		\$255
760537001	Shelving for mid compartment left side or right side – 3 shelves		\$396
560535003	Shelving for horizontal compartment – right side - 1 shelf with tall dividers		\$393
560535004	Shelving for horizontal compartment left side - 1 shelf with short dividers		\$385
560535006	Shelving for rear compartment opposite crane box - 3 shelves		\$529
772000270	Shelving for crane compartment – 1 fixed shelf		\$281

Toolboxes			
Part Number	Description	List Price	Installed List Price
760385100	Front compartment – Aluminum Toolbox (2) 7", (2) 5", (5) 3"	\$3,505	
760585200	Mid compartment – Aluminum Toolbox (3) 7", (2) 5", (4) 3"	\$3,154	
739380204	Mid compartment – Bolt Bin (18 bin)	\$2,339	
760585301	Horizontal compartment – Aluminum Toolbox (3) 3"	\$2,514	
760585302	Horizontal compartment – Aluminum Toolbox (4) 3"	\$1,908	
760585303	Horizontal compartment – Aluminum Toolbox (5) 3"	\$2,140	
739380305	Horizontal compartment – Bolt Bin (15 bin)	\$2,209	
760585200	Rear compartment – Aluminum Toolbox (3) 7", (2) 5", (4) 3"	\$3,154	
716862000	Install toolbox (Add to part number above for each toolbox)		Add \$398

Interior Lighting Options			
https://autocrane.us/product-category/accessories/lights/			
Part Number	Description	List Price	Installed List Price
475300145	Full Length LED interior compartment lighting for 58" tall full length bodies (1) 48" light per vertical & 18" horizontal & crane compartment	\$1,191	
716869000	Install interior lighting (Add to part number above)		Add \$961

Underbody Lighting			
Part Number	Description	List Price	Installed List Price
475300380	Underbody Lighting , Kit, 14' Bodies		\$1,726

Titan 85 - 14' Body Accessories

Bodies

Oxygen/Acetylene Compartment Options			
Part Number	Description	List Price	Installed List Price
736233000	Three oxygen/acetylene bottle holders with hose holder (for standard or tall compartment)		\$602
560483000	Oxy divider / shelving package for front compartment (fits 58" tall front compartment)		\$1,006
560544000	Mid compartment oxygen/acetylene holder (2 bottles)		\$596
736373000	Mid compartment oxy/acet bottle holder (2 bottle, clamp style)		\$396
560206000	Drop-well Assembly (2" deep)		\$467
560258000	Drop-well assembly (6" deep)		\$614
560446000	Mid compartment drop-well (2" deep)		\$535

Outriggers			
Part Number	Description	List Price	Installed List Price
715321030	Shipping tube, to be ordered when outriggers are not installed		N/C
772020001	Full hydraulic outriggers – double slide - Right Side Crane	\$11,232	
772020010	Full hydraulic outriggers - remote valve bank - double slide - Right Side Crane	\$12,812	
716857000	Install outrigger (Add to part number above)		Add \$344

Bumpers & Accessories			
Part Number	Description	List Price	Installed List Price
772059000	30" workbench bumper (vise plate, storage area and integrated step) – Right Side Crane	\$3,999	
772059006	30" workbench bumper, for remote mount valve bank - Right Side Crane	\$4,534	
716856000	Install bumper mounting plates (Add to part number above)		Add \$185
716856001	Install bumper (Add to bumper part number if it is a factory upfit, includes installing bumper mounting plates)		Add \$375
772083000	Reinforced bumper overlay for 30" bumper for hydraulic outriggers		\$1,598
752311000	Additional vise plate for bumpers (3/8" X 10" X 15")	\$76	
750509000	Additional vise plate installed (Includes above part number)		\$226
717530101	Wilton 6" Vise	\$944	
717530011	Install vise, tapped plate (add to vise part number above)		Add \$306
717530002	Wilton 8" Vise		\$1,636

Receiver Hitch			
Part Number	Description	List Price	Installed List Price
760365010	Receiver hitch for 30" bumper		\$1,010

Titan 85 - 14' Body Accessories

Bodies

Trailer Plugs			
Part Number	Description	List Price	Installed List Price
739167000	Trailer socket – heavy duty with round pins (SAE J560)	\$39.50	
739167005	Trailer wiring socket – 7 way spade	\$32.75	
716861400	Install trailer plug (Add to part number above)		Add \$430

Paint			
https://autocrane.us/product-category/accessories/coatings/			
Part Number	Description	List Price	Installed List Price
716881000	(Auto Crane White) Painted on the outside and inside of the body		\$3,050
716881030	(Auto Crane White) Painted on the outside of the body and multicolor coating on the inside of the compartments		\$3,601
716863000	(Auto Crane White) -painted inside compartments only		\$934
716881040	Coating, multicolor - inside compartments only		\$1,575
900502000	Custom Paint		\$4,502

Titan Armor (In place of Paint)			
https://autocrane.us/product/titan-armor/			
Part Number	Description	List Price	Installed List Price
750631012	Titan Armor, painted white on the outside, multicolor on the inside		\$6,302
750631010	Titan Armor, custom paint on the outside, multicolor on the inside		\$7,623

Bedliner & Rock Guard Options			
https://autocrane.us/product-category/accessories/coatings/			
Part Number	Description	List Price	Installed List Price
717510002	Bedliner - Floor and Sides Only		\$1,773
717510004	Bedliner - Floor, Sides and Compartment Tops		\$2,154
717510005	Bedliner - Workbench bumper		\$630
717510007	Arctic Package (rock guard coating for paint protection)		\$1,623
717510008	Bedliner - Front of Body		\$840
739408011	Rock guard installation, 21" x 21" aluminum diamond plated		\$568

Boom Support			
Part Number	Description	List Price	Installed List Price
715064020	Boom support (EHC-3.2 & EHC-4 cranes)	\$438	
560195015	Boom support (EHC-5 – HC-14 cranes)	\$684	
716858000	Install boom support (Add to part number above)		Add \$159

Titan 85 - 14' Body Accessories

Bodies

Light Bars & Headache Racks

Part Number	Description	List Price	Installed List Price
739317845	Light bar – 17 9/16" tall – Ford chassis		\$1,106
739317885	Light bar – 27" tall – Freightliner, Kenworth & International chassis		\$1,105
739317865	Light bar – 33" tall – Peterbilt & Hino chassis		\$1,104
560710106	Headache rack, Titan 38-85, 24 ½" tall		\$2,066

Work Light Options

Part Number	Description	List Price	Installed List Price
475300034	LED Floodlight, square, 1600 lumens	\$110	
716861000	Install work lights (Add to part number above)		Add \$213

Hand Rail Option (See pictures in next section)

Part Number	Description	List Price	Installed List Price
560545100	Hand rail (rear of body to bumper, replaces grab handle - left side)	\$425	
560545104	Hand rail (rear of body to bumper, replaces grab handle - right side)	\$422	
560545004	Hand rail, from top left rear of body to bumper	\$470	
772061018	Install hand rail (Add to part number above)		Add \$173

Compartment Hook Options

Part Number	Description	List Price	Installed List Price
750613000	Oxygen / acetylene hook assembly		\$46.50
750614000	J-hook		\$21.25
750807000	Chain hook assembly		\$86.50
753241000	Swivel J-hook		\$40

Master Locking Systems

Part Number	Description	List Price	Installed List Price
760570000	Master lock system stainless/steel – 58" full length Installed		\$1,702

Titan 85 - 14' Body Accessories

Bodies

Titan Trax Struts (Full length mounting struts)			
Part Number	Description	List Price	Installed List Price
739185115	Titan Trax, Titan 50-85 - 14', same height full length of body, one side, opposite crane box		\$627
739185037	Mounting plate, RC40 compressor		\$480
739185055	Mounting plate, AC40 and RS80 compressor		\$546
739185056	Mounting plate, RS85 compressor		\$538
739185057	Blank plate mounting kit, Titan 38-85		\$459
739185065	Mounting plate, EnPak and reservoir		\$947
739185070	Mountng plate, Vanair I300		\$871
739185075	Mounting plate, VMAC H40		\$483
739185088	Mounting plate, Miller Bobcat 250 and Trailblazer 325		\$411

Sliding Tops			
Part Number	Description	List Price	Installed List Price
Factory Quote	Lockable sliding top - Titan 85 - 120" CA	Factory Quote	
900504000	Paint sliding top (Auto Crane White)		\$908
900504001	Paint sliding top custom color		\$1,457
716884000	Install sliding top (Add to part number above)		Add \$1,950

Salvage System			
Part Number	Description	List Price	Installed List Price
601000008	Salvage system, integrated, single tank, 60 gal	\$5,177	

Body Installation Kits			
Part Number	Description	List Price	Installed List Price
560581000	Body installation kit	\$212	

Body Installation Charge (to be used with Titan Connect)			
Part Number	Description	List Price	Installed List Price
716870100	Install body on Class 6 & 7 chassis, includes mudflaps (Add to body part number if upfit at factory)		\$4,943

Body Installation Charge (when Titan Connect is not used)			
Part Number	Description	List Price	Installed List Price
716851001	Install body on Class 5 and below chassis, includes mud flaps (Add to body part number if upfit at factory)		\$6,346

Titan 85 - 14' Body Accessories

Bodies

Crane Installation Charges			
Part Number	Description	List Price	Installed List Price
750678000	Install 2003, 3203, or 4004EH crane (Add to crane part number if upfit at factory)		\$936
750679000	Install hydraulic crane (Add to crane part number if upfit at factory)		\$1,433
360870000	Install 5005EH or 6006EH crane - includes battery and battery box (Add to crane part number if upfit at factory)		\$1,543

Equipment			
Part Number	Description	List Price	Installed List Price
750831000	ICC safety kit (Complies with FMVH Safety Standard No. 125, Sec. 571.125)	\$90.75	
750061000	Fire extinguisher (Complies with FMCS Regs. Sec. 393.95 – classification 2 – A:10-B:C unit)	\$174	
750681000	Backup safety alarm		\$330

PTO (For Factory Intalls Only)			
Part Number	Description	List Price	Installed List Price
736997000	PTO and installation for an automatic transmission		\$5,128
736998000	PTO and installation for a manual transmission		\$4,150

Spring Reinforcement			
Part Number	Description	List Price	Installed List Price
736995001	Spring reinforcement		\$2,321

Hydraulic Reservoirs			
Part Number	Description	List Price	Installed List Price
480420100	15-gallon reservoir with return filter, sight gauge, and suction strainer	\$671	
751095070	36-gallon bulkhead reservoir to fit inside 50" wide cargo area with return filter and sight gauge	\$1,444	
340169400	Oil Cooler Kit (for use when oil temperature exceeds 180°, or application prevents install of recommended 2x total GPM tank capacity, or crane and/or compressor is operated in continuous duty applications)	\$2,970	

Titan 85 - 14' Body Accessories

Bodies

Hydraulic Installation Kits			
Part Number	Description	List Price	Installed List Price
760485001	Hose kit for Titan 85	\$1,516	
738489000	Install hydraulic components (Add to hose kit part number if upfit at factory)		Add \$1,369

Speed Control (when Titan Connect is not used)			
Part Number	Description	List Price	Installed List Price
717535000	Relay Box Assembly	\$1,400	
716893001	Install relay box (Add to relay box assembly part number if upfit at factory)		Add \$1,471
717515000	Power Switch Control Panel Assembly	\$646	
716893002	Install control panel (Add to control panel assembly part number if upfit at factory)		Add \$1,031
717514000	Stand for Control Panel (include with above part number if mounting in cab of chassis)	\$384	

Wiring Harness (select when Titan Connect is not used)			
Part Number	Description	List Price	Installed List Price
560106003	Wiring harness	\$884	

Compressor Adapter Harness (select with Titan Connect)			
Part Number	Description	List Price	Installed List Price
755501013	Adapter harness for RC40 compressor	\$54.50	
475300367	Adapter harness for RC40-L compressor	\$67.75	
475300343	Adapter harness for VMAC	\$67.75	
475300367	Adapter harness for RS85	\$67.75	

Titan Connect			
Part Number	Description	List Price	Installed List Price
475301371	Titan Connect, Kit, 14' bodies (comes with harness and keypad)	\$3,592	
475301360	Titan Connect, Kit, 14' bodies, Installed (Includes above part number)		\$5,297
475300361	Dealer Titan Connect kit (each upfit facility will need one of these for the programming of Titan Connect)	\$1,622	

Additional Keypad for Cab (used with Titan Connect)			
Part Number	Description	List Price	Installed List Price
475301356	Additional Keypad and mount for cab	\$708	

Titan 85 - 14' Body Accessories

Bodies

Chassis Adapter Harness (select with Titan Connect)			
Part Number	Description	List Price	Installed List Price
475301355	Adapter harness, tail light, Freightliner	\$115	
475301353	Adapter harness, tail light, Peterbilt	\$70	
475300366	Adapter harness, tail light, Mack	\$102	
475301357	Adapter harness, tail light, International	\$102	

Power On-Demand (used with Titan Connect only)			
Part Number	Description	List Price	Installed List Price
475300365	Power On-Demand		\$2,100

Titan Connect™

Available now on the Titan 38-11', Titan 60-11', Titan 60-14', and Titan 85-14' bodies.

- Consistent and faster installation

Allows troubleshooting no matter who builds truck

- 4 Harnesses, Keypad, PDM, E-Stop, Brackets and Hardware

- Harness

Plug and go connections

Faster installs

Labeled - Tells location and function

Nylon Braided Loom

Better abrasion protection

Pre-wired circuits with connectors

Standard connections for crane, work lights, strobe lights, compressor, PTO or auxiliary power unit

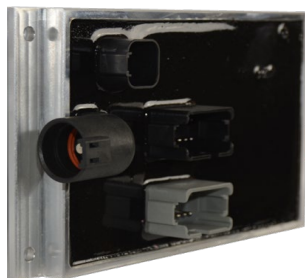


- Keypad

Rubberized, Glove-Friendly Keypad



- PDM



****Titan Connect is for HC model cranes only**

Power On Demand™

(Must have Titan Connect)

- **System automatically runs truck engine and PTO**

Starts engine and PTO based on demand

Idles up and starts PTO automatically

Shuts-down PTO and engine if no demand

Insures Productivity, Fuel and Maintenance Cost Savings

- **Lower Fuel and Maintenance Costs**

Optimized engine and PTO operation

Fuel savings

- **Lengthen Lifecycle of Assets**

Longer chassis, power source life

Better PM and service scheduling

- **Tighten Metric Control**

Lower acquisition costs, operating costs

- **Increase Productivity**

Streamline job tasks



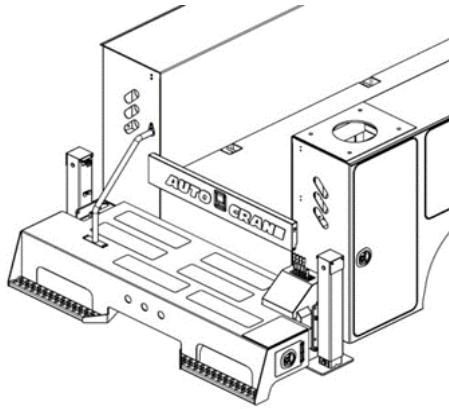
Patent Pending

Accessory Pictures

Hand Rails

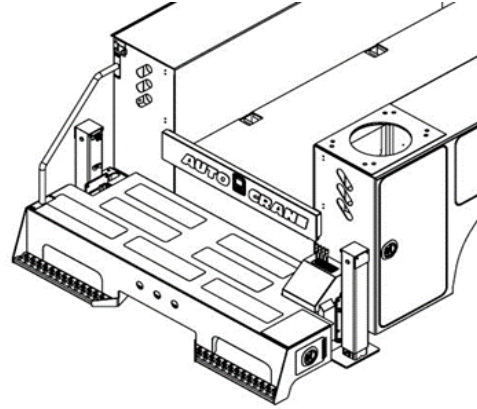
560545100

(For Titan 50, 60, 85 - 24" & 30" bumpers)



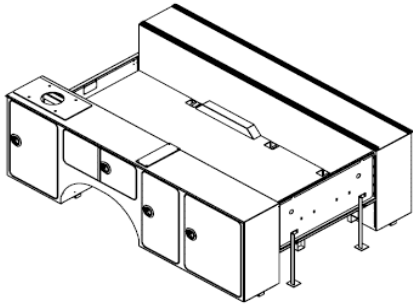
560545004

(For 30" bumpers only)

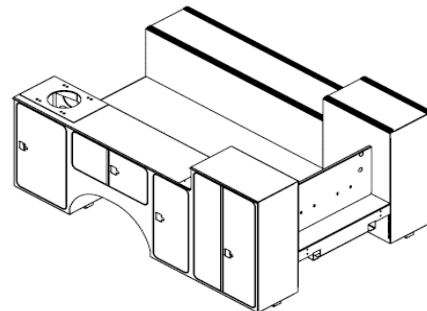


Titan Trax

715330020

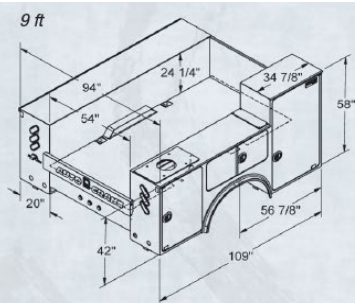


739185031



Chassis - Body - Crane Application

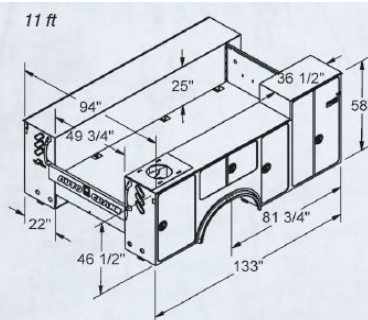
Chassis - Body - Crane Application																
Make	Model	Body	EC-2/2x	EHC-3	EHC-4	EHC-5	EHC-6	HC-6	HC-7/7x	HC-8/8x	8406H	HC-9	HC-10/12s	HC-12	HC-14	
Ford	F350	Titan 16	X	X	X											
	F450	Titan 38	X	X	X	X	X	X	X	X						
	F550	Titan 38	X	X	X	X	X	X	X	X						
	F650	Titan 50				X	X	X	X	X	X					
		Titan 60											X	X		
	F750	Titan 60											X	X		
		Titan 85												X	X	
Chevy	4500 HD	Titan 38	X	X	X	X	X	X	X	X						
	5500 HD	Titan 38	X	X	X	X	X	X	X	X						
	6500 HD	Titan 38	X	X	X	X	X	X	X	X						
RAM	3500	Titan 16	X	X	X											
	4500	Titan 38	X	X	X	X	X	X	X	X						
	5500	Titan 38	X	X	X	X	X	X	X	X						
International	CV Series	Titan 38	X	X	X	X	X	X	X	X						
	CV Series	Titan 38	X	X	X	X	X	X	X	X						
	MV Series DuraStar	Titan 50				X	X	X	X	X	X					
		Titan 60											X	X		
		Titan 85												X	X	
Kenworth	T170	Titan 38	X	X	X	X	X	X	X	X						
	T270	Titan 50				X	X	X	X	X	X					
		Titan 60											X	X		
	T370	Titan 85												X	X	
Freightliner	M2-106	Titan 38	X	X	X	X	X	X	X	X						
		Titan 50				X	X	X	X	X	X					
		Titan 60											X	X		
		Titan 85													X	X
		Titan 85													X	X
Peterbilt	330-335	Titan 85												X	X	
	340-389	Titan 85												X	X	
Crane Body		Titan 16	X	X	X											
		Titan 38	X	X	X	X	X	X	X	X	X					
		Titan 50				X	X	X	X	X	X	X				
		Titan 60											X	X		
		Titan 85													X	X



Titan 16

Available in:

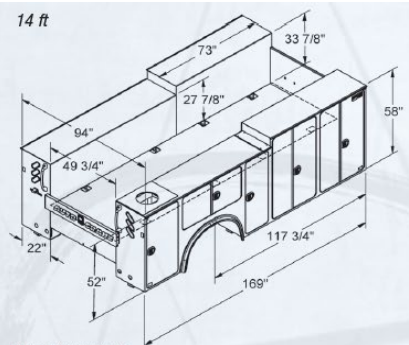
- 9 ft and 11 ft body lengths
- Left Side Tall, Both Sides Tall, Both Sides Standard
- Right Side Crane and Left Side Crane



Titan 38

Available in:

- 9 ft and 11 ft body lengths
- Left Side Tall, Both Sides Tall, Both Sides Standard
- Right Side Crane and Left Side Crane

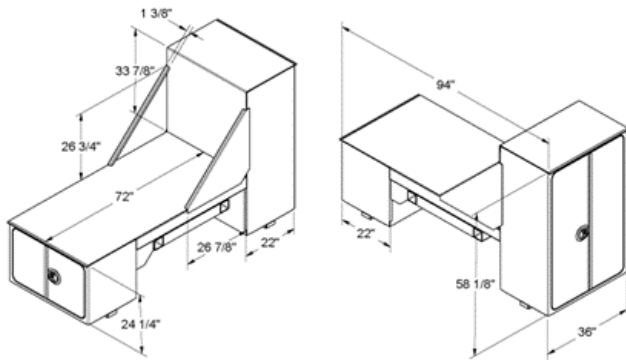


Titan 50/60/85

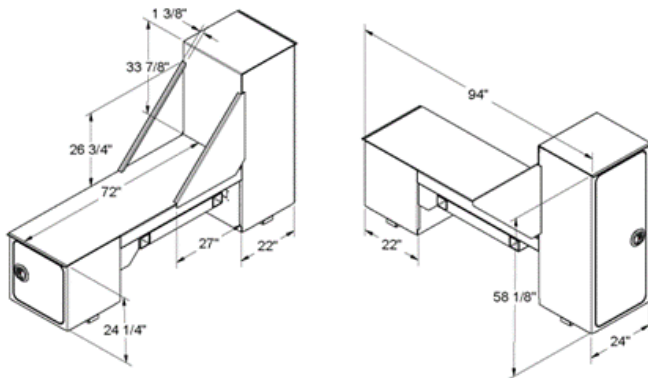
Available in:

- 11 ft and 14 ft body lengths for Titan 50 & 60
- 14 ft body lengths for Titan 85
- 52 in & 58 in tall side-packs (11 ft bodies)
- Both Sides Tall (14 ft bodies)
- Right Side Crane and Left Side Crane

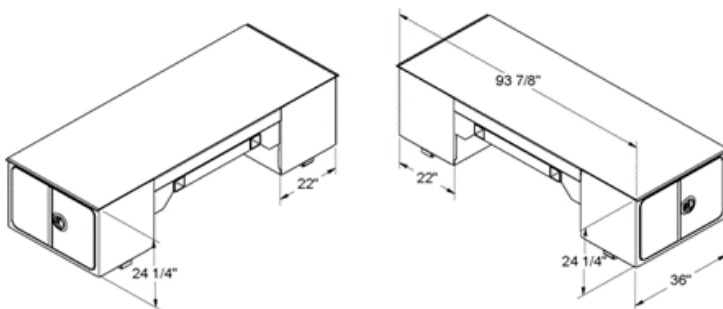
Saddles (Titan 50 and Above)



Part Number	Description	List Price
560257000	36" wide welders, 58" Tall	\$10,997

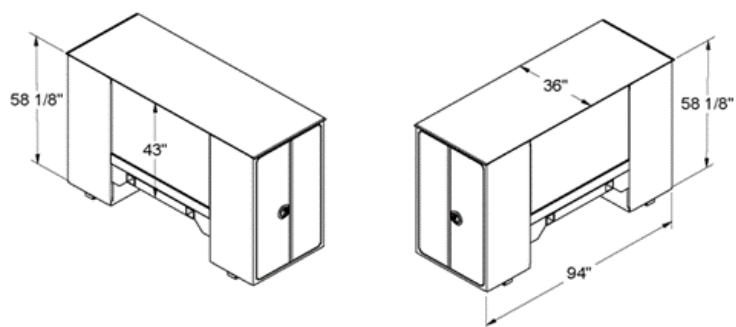


Part Number	Description	List Price
560257024	24" wide, left side is 58" tall	\$9,025

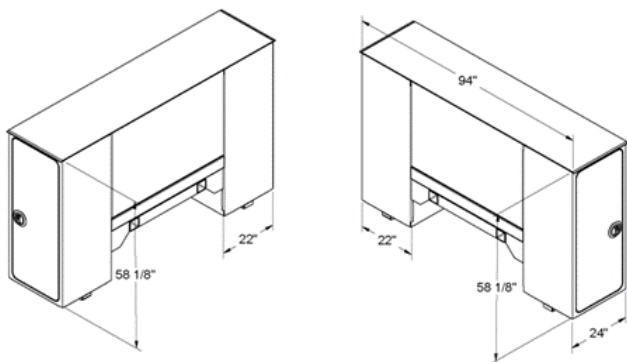


Part Number	Description	List Price
560575000	36" wide welders, 24" Tall	\$7,054

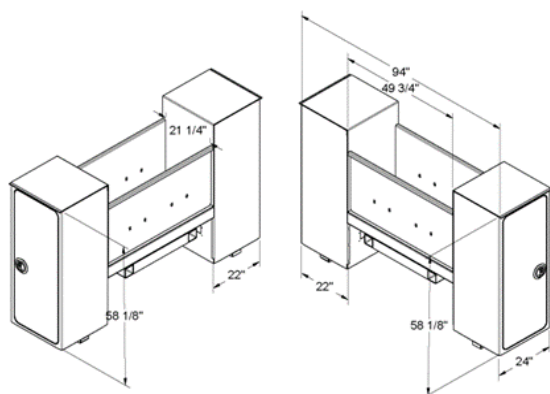
Saddles (Titan 50 and Above)



Part Number	Description	List Price
560490000	36" wide, transverse	\$10,860

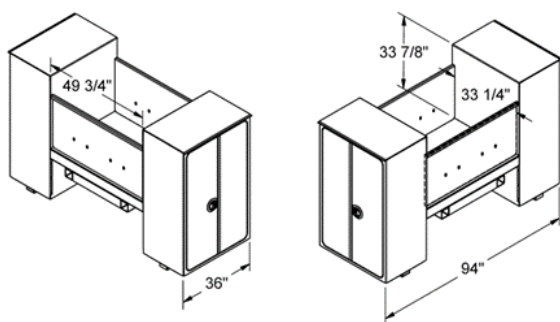


Part Number	Description	List Price
560490024	24" wide, 58" tall, transverse	\$9,859

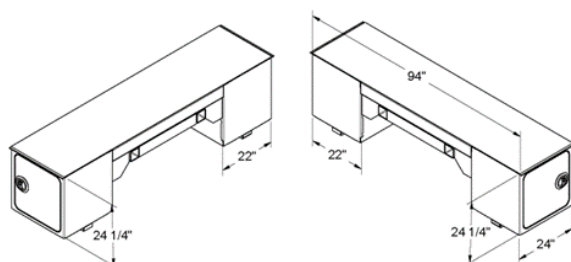


Part Number	Description	List Price
560269024	24" wide, 58" double tall	\$9,563

Saddles (Titan 50 and Above)



Part Number	Description	List Price
560269000	36" wide, double tall	\$11,261



Part Number	Description	List Price
560575024	24" wide, 24" tall	\$7,659

Saddle Accessories

Paint & Bedliner			
Part Number	Description	List Price	Installed List Price
766606000	(Auto Crane White) Painted inside and outside of saddle		\$1,025
716881060	Paint outside of saddle white and inside multicolor		\$1,223
717510012	Bedliner - Saddle		\$682

Titan Armor (In place of Paint)			
Part Number	Description	List Price	Installed List Price
750631014	Titan Amor, painted white on the outside, multicolor on the inside		\$1,693

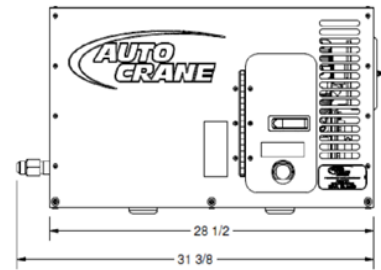
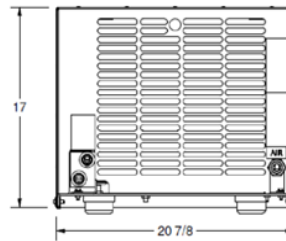
Installation Charges			
Part Number	Description	List Price	Installed List Price
716852000	Install saddle (Add part number to saddle part number)		\$737

* Saddles are for Titan 50, Titan 60, and Titan 85 bodies

Compressors

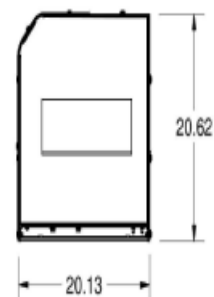
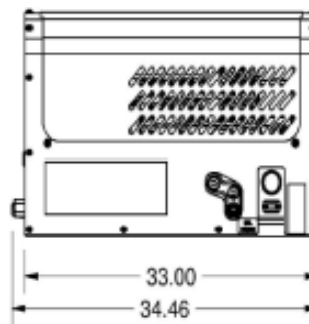
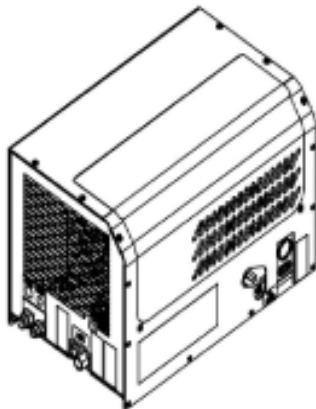
Reciprocating Air Compressor

Part Number	Description	List Price	Installed List Price
755501000	AC40 hydraulic compressor delivers 40 cfm @ 100 psi (Approximate weight is 200 lbs.)	\$7,335	
739188057	AC40 mounting kit installed		\$330
739185055	Titan Trax mounting plate for AC40 compressor (must have Titan Trax Titan 38 - 85 struts installed)		\$546
755499000	Install air compressor (Add to air compressor part number above)		Add \$649



Rotary Screw Air Compressor

Part Number	Description	List Price	Installed List Price
755504000	RS80 rotary screw air compressor, generates 80 cfm @ 100 psi (Approximate weight is 300 lbs.)	\$10,216	
755504002	RS80 mounting kit installed		\$342
739185055	Titan Trax mounting plate for RS80 compressor (must have Titan Trax Titan 38 - 85 struts installed)		\$546
755499000	Install air compressor (Add to air compressor part number above)		Add \$649



Miller and Vanair

Miller EnPak			
Part Number	Description	List Price	Installed List Price
739186003	Miller EnPak A60GBHW Generator Battery Charge Hydraulics Welding Chassis Power (907815)	Call Factory for Quote	
739186004	Miller EnPak A60GBH Generator Battery Charge Hydraulics Chassis Power (hydraulic power but no welder) (907814)	Call Factory for Quote	
739186005	Miller EnPak A60GB Generator Battery Charge Chassis Power (no hydraulic power or welder) (907813)	Call Factory for Quote	
739188093	20 gallon hydraulic reservoir tank for EnPak (300550)	\$3,169	
739188094	Adapter, wireless remote (not NexStar) (300552)	\$716	
739188095	Adapter, NexStar wireless remote (300772)	\$553	
739188066	EnPak and reservoir mounting kit		\$860
739185065	Titan Trax mounting plate for EnPak and reservoir (must have Titan Trax Titan 38 - 85 struts installed)		\$947
716861500	Install EnPak A60 (Add to EnPak part number above)	Add \$3,025	
739188099	EnPak, A30GBW, gasoline (907772)	Call Factory for Quote	
739188125	Install EnPak A30 (Add to EnPak A30 part number above)	Add \$1,388	

EnPak A60



739188



Miller and Vanair

Vanair			
Part Number	Description	List Price	Installed List Price
739188100	Air N Arc I300 w/hydraulic reservoir and accessories	Call Factory for Quote	
739188103	Vanair Air N Arc mounting kit		\$765
739185070	Titan Trax mounting plate for Vanair I300 (must have Titan Trax Titan 38 - 85 struts installed)		\$871
716861500	Install Vanair All-in-One (Add to Vanair part number above)		Add \$3,025
755503001	Vanair RS85 Rotary Screw Air Compressor with analog display (051945)	Call Factory for Quote	
739188122	Vanair RS85 mounting kit		\$410
739185056	Titan Trax mounting plate for Vanair RS85 (must have Titan Trax Titan 38 - 85 struts installed)		\$538
601106005	Vanair Pro 35 (35 CFM @ 100 PSI, 30 gallon)	Call Factory for Quote	
739185036	Vanair Pro 35 mounting kit (for the 601106005 compressor mounted on the Titan 16 body)		\$613
739185109	Titan Trax mounting plate for Pro 35 (must have Titan Trax Titan 16 struts installed)		\$537
601107500	Vanair Pro 35 compressor, skid mount	Call Factory for Quote	
739317890	Vanair Pro 35 Skid Mount (for Titan 38 -85 bodies)		\$342
755501001	Vanair RC40, reciprocating air compressor	Call Factory for Quote	
739188059	Vanair RC40 mounting kit		\$346
739185037	Titan Trax mounting plate for RC40 (must have Titan Trax Titan 38 - 85 struts installed)		\$480
755505001	Vanair RS45 compressor	Call Factory for Quote	
560626075	Vanair RS45 mounting kit		\$286
755499000	Install compressor (Add to compressor part number above)		Add \$649

739188100



601106005



755501001



Accessories

Air Filter, Regulator, Lubricator https://autocrane.us/product/norgren-air-fr1/			
Part Number	Description	List Price	Installed List Price
750205016	Air filter, regulator, lubricator assembly	\$641	
750682000	Air filter, regulator, lubricator (Includes part number above)		\$968

Hose Reels			
Part Number	Description	List Price	Installed List Price
750822000	Hose reel with 50 ft. of 1/2" hose (Includes connecting hose and hardware)	\$1,012	
750632000	Hose reel installed with 50 ft. of 1/2" hose		\$1,156
750635000	Hose reel installed with 50 ft. of 1/2" hose with rear exit and air hose guide (for crane box only)		\$1,681
750213004	Air hose guide installed for 1/2" hose (for crane box only)		\$236
751080020	Hose reel with 25 ft. of 3/4" hose	\$2,480	
760629002	4-Way roller to be used with hose reels 3/4" hose	\$79.25	
760629011	4-Way roller to be used with hose reels 3/4" hose (Includes part number above)		\$248
716872000	Install hose reels (Add to hose reel part number above)		Add \$257
739115110	Hose reel access door (does not come with a shelf, see the body section for shelving)		\$426

Air Receiver Tanks			
Part Number	Description	List Price	Installed List Price
475400015	20 Gallon in-frame air tanks -2 tanks, 10 gallons each (For use on the Titan 38 body only)	\$2,541	
475400010	Install dual in-frame air tanks (Add to part number above)		Add \$762
475400016	10 Gallon in frame air tank (For use on the Titan 38 body only)	\$1,263	
475400011	Install single in-frame air tank (Add to part number above)		Add \$482
750828000	30-gallon receiver tank, pressure gauge, connecting hoses and hardware (Overall dimensions: 38" x 16" x 18.25")	\$1,116	
751220000	30-gallon under-chassis mount receiver tank, connecting hoses and hardware. Overall dimensions: 26" x 20" x 20" (Mounts at the rear of the chassis between the frame rails (Titan 50, 60, and 70 bodies)	\$1,449	
750848000	60-gallon receiver tank, pressure gauge, connecting hoses and hardware. Overall dimensions: 48" x 20" x 22.5".	\$1,789	
716873000	Install air receiver tank (Add to part number above)		Add \$481

Welders

Miller Welders			
Part Number	Description	List Price	Installed List Price
739186000	Miller Bobcat 260, Kohler Gas Welder - (907792001)	Call Factory For Quote	
739185020	Miller Trailblazer 325 Gas, EFI with GFCI, Excel, Arcreach - (907798003)	Call Factory For Quote	
739185025	Miller Trailblazer 325 Diesel, GFCI & Excel (Kubota) - (907755002)	Call Factory For Quote	
739185015	Bracket weldment, welder (Installed rear of body opposite crane box)	\$233	
739185016	Bracket weldment and mounting plate for Miller Bobcat	\$644	
739185088	Titan Trax mounting plate for Miller Bobcat/Trailblazer welder (must have Titan Trax Titan 38 - 85 struts installed)	\$411	
601109002	Install welder (Add to welder part number above)	Add \$652	

739186000



739185020



739185025



Miller Big Blue Welders		
Part Number	Description	List Price
739310031	Miller Big Blue 600 air pack (907750)	Call Factory For Quote
739310038	Miller Big Blue 800 air pack (9077502001)	Call Factory For Quote

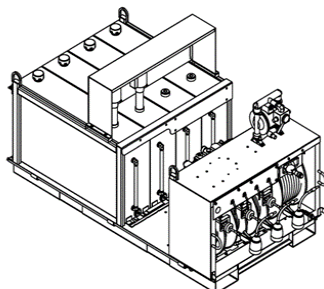
739310031



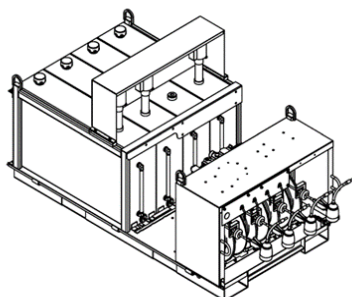
739310038



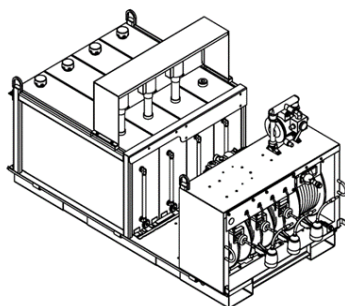
Lube Skids



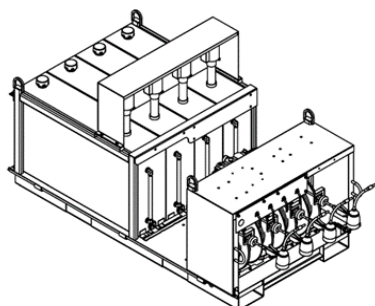
Part Number	Description	List Price
601000001	Mobile Lube Skid Tank Configuration: (2) Oil, (1) Anti-freeze, (1) Oil Salvage 60 gallon top fill aluminum tanks	\$29,512



Part Number	Description	List Price
601000002	Mobile Lube Skid Tank Configuration: (3) Oil, (1) Anti-freeze 60 gallon top fill aluminum tanks	\$29,512



Part Number	Description	List Price
601000003	Mobile Lube Skid Tank Configuration: (3) Oil, (1) Oil Salvage 60 gallon top fill aluminum tanks	\$29,259



Part Number	Description	List Price
601000004	Mobile Lube Skid Tank Configuration: (4) Oil 60 gallon top fill aluminum tanks	\$29,259

Lube Skid Options

Part Number	Description	List Price
601000020	Grease Pump Option - includes: - air piston pump (50:1) - tie down kit - control valve - 50' of 3/8" hose on reel - air regulator - hose and connectors	\$4,568
601000032	Filter Option - (2) filters (for use with part number 601000001)	\$1,041
601000033	Filter Option - (3) filters (for use with part numbers 601000002 and 601000003)	\$1,441
601000034	Filter Option - (4) filters (for use with part number 601000004)	\$1,999
601000040	Oil Pump Option - 5:1 upgrade kit (One kit per tank)	\$629

Warranty

Service Cranes (Limited Warranty, 2 Year Parts and Labor)

Auto Crane will warranty to the consumer for a period of (2) years parts and labor from the date of purchase. Each new Auto Crane unit they sell will be free under normal use and service from defects in material and workmanship. Date of purchase will be honored as the date indicated on the Bill of Sale, which must accompany the Warranty Registration and be on file with Auto Crane. Absent a valid Warranty Registration and appropriate documentation, the original date of manufacture, as indicated by the serial number on the product, will be used to determine the effective date of the 2 year warranty.

The obligation of Auto Crane under this warranty is limited to the replacement or repair of parts that appear to the manufacturer after review and/or inspection to be defective and paid flat rate labor for replacing defective parts. This warranty does not obligate Auto Crane to bear the travel time charges in connection with the replacement or repair of defective parts. Responsibility for customer's claims arising from misapplication, abuse, misuse or alteration of equipment or parts lies with the distributor or user and no warranty obligation is assumed in these circumstances by Auto Crane.

Auto Crane will in no event be liable for any consequential damages or contingent liabilities arising out of the failure of any Auto Crane Product or parts to operate properly.

Auto Crane makes no warranty in respect to component accessories, it being subject to the warranties of their respective manufacturers.

If field service, at the request of the distributor, is rendered and fault is found not to be with Auto Crane's product, the distributor shall pay the time and expense of the field representative.

Claims for service labor or other expenses that have incurred by the buyer without approval or authorization or Auto Crane will not be accepted.

Crane Bodies (5 Year Limited Body Warranty)

Covered Products:

- Auto Crane Service Bodies -- no rust-thru guarantee to the first owner/user or record for five (5) years from the date of purchase.
- Door Hinges -- Guarantee the hinges will not fail to operate or come off the product, to the first owner/user of record for five (5) years from the date of purchase.

Eligibility:

- Product(s) warranted must be properly maintained and serviced under the guidelines recommended in the Owner's Manual.
- The selling distributor must file for the first owner/user the application for warranty by completing the delivery report form enclosed in the Owner Manual within 30 days of the product purchase date. The complete delivery report form must be forwarded to Auto Crane Company. The warranty agreement issued is not transferable.
- Product(s) that have been misused or damaged, inclusive of, but not limited to, accidents.

Warranty

Exclusions:

- Warranty applies to the Auto Crane bodies only and excludes all options, modifications and alterations.
- Paint required following repairs or replacement of parts under warranty after the first year from the date of delivery.
- Product(s) that have been misused or damaged, inclusive of, but not limited to, accidents.
- Absent a completed and valid delivery report form, the original date of manufacture will be used as the effective date for the limited warranty.

Specific Non-Rust-Thru Warranty Exclusions:

- Product(s) that have been used to carry corrosive materials, where such materials result in rust-thru conditions.
- Product(s) purchased by the first owner/user in prime paint condition.
- Consequential damages including, but not limited to, transportation costs, lost profit and loss of income, as a result of a vehicle being out of service.
- Product(s) purchased and used outside the U.S.A. or Canada.

Applying for Warranty

- Claims may be handled by contacting your nearest authorized Auto Crane Distributor. All claims are to be filed in writing on an Auto Crane Warranty Claim Form.
- The Auto Crane Company reserves the sole right to inspect item(s) claimed for warranty and decide the best way to handle any and all claims, including the replacement or repair of the warranted part.
- Should the warranted product rust thru, the hinges fail to operate or come off the product, Auto Crane will pay the cost of parts and flat rate labor to repair or replace as necessary the defective component. NOTE: Paint following repair or replacement of a part is exclusive under warranty after the first year from date of delivery.
- DEFECTS FROM MANUFACTURING WORKMANSHIP AND/OR MATERIAL NOT SPECIFIED ABOVE WILL BE SUBJECT TO WARRANTY INCLUSIVE OF MATERIALS AND LABOR TO THE FIRST OWNER/USER OF RECORD FOR TWO (2) YEARS FROM THE DATE OF DELIVERY. Exclusions, as well as methods of applying for warranty remain the same as stated in the limited five (5) year warranty covered above.

AUTO CRANE COMPANY IS UNDER NO OBLIGATION TO EXTEND THIS WARRANTY TO ANY CUSTOMER FOR WHICH AN AUTO CRANE DELIVERY REPORT FORM HAS NOT BEEN COMPLETED AND ON FILE WITH AUTO CRANE COMPANY

Titan Armor Warranty

TITAN ARMOR PAINT WARRANTY PERTINENT INFORMATION

Auto Crane has introduced a new surface coating package with Industry leading corrosion protection called Titan Armor. The technology used in this adaption to trucks has been proven in the marine and industrial applications for decades. Titan Armor differs from the standard Auto Crane paint product in a few areas;

- Standard paint warranty for surface rust is 2 years from date of service. Titan Armor's is a 5 year surface rust and 15 year rust through warranty, by far the best in the industry.
- Paint materials are different.
- Titan Armor is a marine based industrial product rather than an automotive product, thus the gloss and surface texture may be a little less than normal and will not be automotive finish smoothness/aesthetic.

This warranty starts with the date of purchase as indicated on the Bill of Sale to the original purchaser, which must accompany a Warranty Registration submitted online at www.autocrane.com within 30 days of sale. Absent a copy of the bill of sale to the original owner, the manufacture date (as specified by the product SN) will be used for the warranty start date. This warranty is granted to the original purchaser only and is not transferrable. This warranty covers repair of defective paint areas only.

The dealer must contact Auto Crane for materials and repair instructions that will preserve the integrity of the paint system. Failure to use these materials and procedures for Titan Armor paint repairs will void the Titan Armor warranty. All repair quotes must be itemized to include parts/materials, labor hours and rate, and any freight charges. Any repairs should be completed with Auto Crane part numbers supplied for paint touch up, repair, or any warranty measures. All warranty repairs are at the discretion of Auto Crane and must be pre-approved/authorized before work is completed.

Limitations:

- Auto Crane will in no event be liable for any consequential damages or contingent liabilities arising out of the warranty of Titan Armor
- Failure by the owner to perform proper maintenance in accordance with the product manual may void this warranty
- Documentation may be required showing preventative maintenance activities

Titan Armor Warranty

Exclusions:

- Sale from original owner to secondary owner
- Normal wear and tear or external damage to the paint (dents, chips, accidents, corrosive chemical attack to the paint, improper repair or storage, improper maintenance or lack of cleaning)
- Improper sanding or paint prep upon refurbishment of original paint applied to originally sold body
- Problems caused by customer or dealer applied components or decals or from storage
- Use of the product outside the United States and Canada
- Travel time or cost (including pickup/delivery), diagnostic time, loss of use, overtime charges, expedite or miscellaneous fees, third-party or customer repairs, etc.
- Responsibility for customer's claims arising from misapplication, abuse, misuse, or alteration of equipment or parts lies with the dealer or user and no warranty obligation is assumed in these circumstances by Auto Crane
- Replacement of dealer or customer supplied items and decals (which are the responsibility of the customer or dealer)

Warranty decisions by Auto Crane are final and Auto Crane reserves the right to coordinate and complete the repair directly with the customer. This warranty specifies the full and complete obligation by Auto Crane and may not be modified or amended by any person or entity. All claims are to be filed in writing on an Auto Crane Warranty Request form with supporting documentation as necessary.

Define: **Surface rust** – rust as a result of paint degradation NOT due to impact peeling paint, scratch or damaged to bare metal surface, etc. OR Auto Crane warrants that the Titan Armor will not fail due to blistering, adhesion or surface rust for five (5) years

"Rust Through" is defined as a hole rusted through the body metal.

The logo for Titan Armor, featuring the word "TITAN" in a large, bold, italicized, metallic-style font, followed by the word "ARMOR" in a smaller, bold, metallic-style font.

