

Bid Specifications – Telescopic Service Crane

5,000 lb. Maximum Lifting Capacity
25,000 ft.-lb. Maximum Moment



Compliance to Specifications The Bidder shall indicate their compliance by checking "Yes" or "No" for each item specified. Any space not checked shall be interpreted as non-compliance and will result in disqualification of the bid.

Make & Model	<u>EHC-5 NexStar</u>	Comply to Specification		Deviation from Specification
		Yes	No	
Capacity (Measured from Center of Rotation) (See full load and stability charts attached for reference)	5,000 lb. @ 5 ft.			
	4,167 lb. @ 6 ft.			
	3,240 lb. @ 8 ft.			
	2,500 lb. @ 10 ft.			
	2,032 lb. @ 12 ft.			
	1,675 lb. @ 14 ft.			
	1,562 lb. @ 16 ft.			
	1,388 lb. @ 18 ft.			
	1,250 lb. @ 20 ft.			
Specifications & Standards	Overall dimensions (L x W x H) 155 in. x 22.44 in. x 34.25 in.			
	Weight of crane shall not exceed 1,480 lb.			
	Minimum truck chassis of: <ul style="list-style-type: none"> • 14,500 lb. GVWR • 360,000 in.-lb. RBM 			
	Paint – Auto Crane White			
	Compliance with ANSI B30.5 standards and OSHA regulations concerning crawler locomotives and truck cranes (OSHA Title 29, Part 1910.180)			
DC Power Unit	Electro-hydraulic system consists of an electric motor driving hydraulic pump which Provides fluid power to: <ul style="list-style-type: none"> • Boom Lift / Lower • Boom Extension / Retraction • Rotation 			
	Electric motor – 24V DC series wound			

Bid Specifications – Telescopic Service Crane

	Hydraulic:			
	<ul style="list-style-type: none"> • Gear pump, .097 cu. in/rev. displacement • 2.75 gallon nominal-capacity reservoir 			
	System:			
	<ul style="list-style-type: none"> • Set full by-pass relief @ 2,500 PSI • Output: 1.46 GPM minimum @ 2,750 PSI @ 168 amps max. 			

Boom – Lift	Hydraulically actuated			
	Lift angle from -12° to 75°			
Load Sensing	Lift cylinder:			
	<ul style="list-style-type: none"> • Double acting for smooth boom operation • Counterbalance valve incorporated preventing unintentional boom dropping in the event of a hose failure 			
	<ul style="list-style-type: none"> • Pressure transducer sensing coupled with 3-axis true boom angle measurement relative to crane mounting surface and 3-axis true crane base attitude monitoring (truck level). • Automatic 50% reduction of rotation speed while under load (slow rotate) • In Overload condition, disable <u>only</u> hoist up, boom extend and boom down functions. Other functions shall remain operable 			
	<ul style="list-style-type: none"> • In Low Boom Pressure condition, disable <u>only</u> boom down, swing CW and CCW, boom retract and extend, hoist up. Other functions remain operable (Anti-Bridging) 			

Extension	Hydraulically actuated by means of extension cylinder from 10 ft. 4 in. to 20 ft. 4 in.			
	Extension cylinder:			
	<ul style="list-style-type: none"> • Trunnion mounted inside boom to protect from external damage • Double acting for smooth operation • Incorporates counterbalance valve to prevent unintentional boom retraction in the event of a hose failure 			

Bid Specifications – Telescopic Service Crane

Hoist	<ul style="list-style-type: none"> • Motor – 24V DC series wound, 2.5 HP, heavy duty 			
	<ul style="list-style-type: none"> • Actuator must have industrial grade gear box with worm brake 			
	<ul style="list-style-type: none"> • 46:1 worm gear reduction with 7.8:1 spur gear reduction 			
	<ul style="list-style-type: none"> • Consumer grade winch with permanent magnet motor is NOT acceptable 			
	Rated @ 2,500 lb. last layer capacity			
	Line speed: 36 ft./min. (single line) with no load 12 ft./min. with 2500 lb. load			
	80-ft. of .3125 in. diameter aircraft cable with 9,800 lb. breaking strength compliance to ANSI Standards			
Sheave	Anti-friction, high strength polymer with maintenance free, sealed needle bearings			
Anti-two-block Preventer	A bail type to reduce crown to hook distance. (Hanging block two-block sensor is not acceptable.)			
	When activated, shall disable hoist up, boom down and extend out functions			
	Located on the left side of the boom to protect it from tree limbs, etc. while traveling			
	Cable shall be contained in a high impact plastic case with a spring loaded cable reel			
Swivel Block	<ul style="list-style-type: none"> • Heavy-duty type with hook with latch 			
	<ul style="list-style-type: none"> • Provision for double line string up 			
Rotation	Hydraulically actuated			
	450° non-continuous rotation self-locking worm gear drive to hold crane position			
	Two speeds (automatically switched under load)			
	Sealed turntable style slew bearings			
Hydraulic System	Main valve – Mono-block type with individual cartridge valves for the crane functions for easy accessibility and serviceability			
	<ul style="list-style-type: none"> • Proportional Boom Up/Down 			
	<ul style="list-style-type: none"> • Proportional Rotation 			

Bid Specifications – Telescopic Service Crane

	<ul style="list-style-type: none"> • Proportional Boom Ext/Ret. • Manual Override on all functions 			
Control System	Remote Control – FM Radio & Tethered Options: <ul style="list-style-type: none"> • Handheld remote control designed for one hand operation of crane functions. • 2 joystick / 1 trigger configuration • IP67 and CE certified remote • 100% fully independent proportional function joystick or trigger control • Integrated E-Stop button on remote • Four distinct transmitter signal output settings to maximize control resolution for creep operation • Transmitter shall have a color LCD readout providing the operator with feedback to allow explanation of current operating status • Dock for remote charging and storage included 			
	<ul style="list-style-type: none"> • Alkaline battery (AA x 3) backup included 			
	Remote Control – FM Radio: <ul style="list-style-type: none"> • Operates on a rechargeable, internal, lithium-ion battery • Has an estimated 300 foot operating range 			
	Remote Control – Tethered: <ul style="list-style-type: none"> • 32 ft. communication cable included 			
	Receiver – FM Radio and tethered Remote <ul style="list-style-type: none"> • Crane mounted and features • IP65 rated 			
	See Options Section below for additional control configurations.			
Warranty	Manufacturer shall provide a two-year limited warranty against defects in materials and workmanship from the date of delivery			
Options (Must be available as required)	Paint – provide code and desired color if other than standard			
	Boom Support shall be installed for the boom in a stowed position while in transit			

Bid Specifications – Telescopic Service Crane

	Outriggers: <ul style="list-style-type: none">• Shall be installed to increase stability and reduce the load on the truck springs while lifting			
	Oil Temperature Sensor to monitor crane hydraulic oil temperatures			

Notes:

Submitted by: _____

Date: _____

Bid Specifications – Telescopic Service Crane

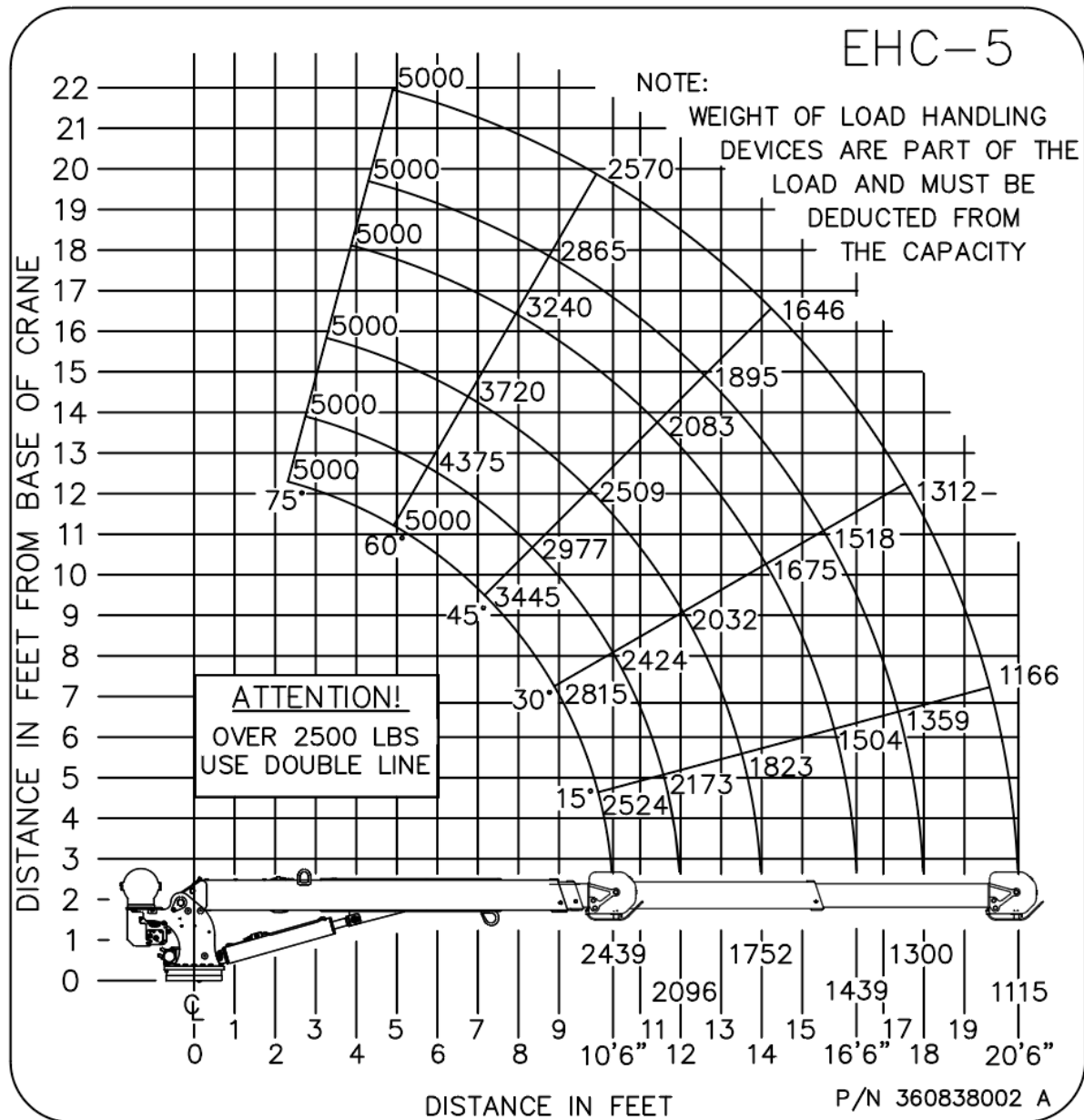


Figure 1: EHC-5 Load Chart