

Bid Specifications – Telescopic Service Crane

6,000 lb. Maximum Lifting Capacity
35,000 ft.-lb. Maximum Moment



Compliance to Specifications The Bidder shall indicate their compliance by checking "Yes" or "No" for each item specified. Any space not checked shall be interpreted as non-compliance and will result in disqualification of the bid.

Make & Model	<u>HC-6 NexStar</u>	Comply to Specification		Deviation from Specification
		Yes	No	
Capacity (Measured from Center of Rotation) (See full load and stability charts attached for reference)	6,000 lb. @ 5 ft.			
	4,375 lb. @ 8 ft.			
	3,402 lb. @ 10 ft.			
	3,041 lb. @ 12 ft.			
	2,626 lb. @ 14 ft.			
	2,143 lb. @ 16 ft.			
	1,819 lb. @ 18 ft.			
	1,367 lb. @ 20 ft.			
Specifications & Standards	Overall dimensions (L x W x H) 156 in. x 23.06 in. x 39.56 in.			
	Weight of crane shall not exceed 1,455 lb.			
	Minimum truck chassis of: <ul style="list-style-type: none"> • 14,500 lb. GVWR • 360,000 in.-lb. RBM 			
	Paint – Auto Crane White			
	Compliance with ANSI B30.5 standards and OSHA regulations concerning crawler locomotives and truck cranes (OSHA Title 29, Part 1910.180)			
Boom – Lift	Hydraulically actuated power extend and power retract			
	Lift angle from -12° to 75°			
	Lift cylinder: <ul style="list-style-type: none"> • Single stage, Double acting for smooth boom operation • Counterbalance valve incorporated preventing unintentional boom dropping in the event of a hose failure 			

Bid Specifications – Telescopic Service Crane

Load Sensing	<ul style="list-style-type: none"> • Pressure transducer sensing coupled with 3-axis true boom angle measurement relative to crane mounting surface and 3-axis true crane base attitude monitoring (truck level). • Automatic 50% reduction of rotation speed while under load (slow rotate) • In Overload condition, disable <u>only</u> hoist up, boom extend and boom down functions. Other functions shall remain operable 			
	<ul style="list-style-type: none"> • In Low Boom Pressure condition, disable <u>only</u> boom down, swing CW and CCW, boom retract and extend, hoist up. Other functions remain operable (Anti-Bridging) 			
Extension	Hydraulically actuated by means of extension cylinder from 10 ft. 4 in. to 20 ft. 4 in.			
	Extension cylinder: <ul style="list-style-type: none"> • Trunnion mounted inside boom to protect from external damage • Double acting for smooth operation • Incorporates counterbalance valve to prevent unintentional boom retraction in the event of a hose failure 			
Hoist	<ul style="list-style-type: none"> • Hydraulic motor driven, planetary gear reduction with a load holding brake 			
	<ul style="list-style-type: none"> • 3,000 lb. last layer capacity 			
	<ul style="list-style-type: none"> • 55 ft./min. (single line) with no load 			
	<ul style="list-style-type: none"> • 95-ft. of .375 in. diameter aircraft cable with 14,700 lb. breaking strength compliance to ANSI Standards 			
Sheave	Anti-friction, high strength polymer with maintenance free, sealed needle bearings			
Anti-two-block Preventer	A bail type to reduce crown to hook distance. (Hanging block two-block sensor is not acceptable.)			
	When activated, shall disable hoist up, boom down and extend out functions			
	Located on the left side of the boom to protect it from tree limbs, etc. while traveling			

Bid Specifications – Telescopic Service Crane

	Cable shall be contained in a high impact plastic case with a spring loaded cable reel			
Swivel Block	<ul style="list-style-type: none"> • Heavy-duty type with hook with latch 			
	<ul style="list-style-type: none"> • Provision for double line string up 			
Rotation	Hydraulically actuated			
	450° non-continuous rotation self-locking worm gear drive to hold crane position			
	Two speeds (automatically switched under load)			
	Sealed turntable style slew bearings			
Hydraulic System	Main valve – Mono-block type with individual cartridge valves for the crane functions for easy accessibility and serviceability			
	<ul style="list-style-type: none"> • 8 GPM @ 2,750 PSI 			
	<ul style="list-style-type: none"> • Proportional Boom Up/Down 			
	<ul style="list-style-type: none"> • Proportional Rotation 			
	<ul style="list-style-type: none"> • Proportional Boom Ext/Ret. 			
	<ul style="list-style-type: none"> • Proportional Hoist Up/Down 			
	<ul style="list-style-type: none"> • Manual Override on all functions 			
Control System	Remote Control – FM Radio & Tethered Options:			
	<ul style="list-style-type: none"> • Handheld remote control designed for one hand operation of crane functions. 			
	<ul style="list-style-type: none"> • 2 joystick / 1 trigger configuration 			
	<ul style="list-style-type: none"> • IP67 and CE certified remote 			
	<ul style="list-style-type: none"> • 100% fully independent proportional function joystick or trigger control 			
	<ul style="list-style-type: none"> • Integrated E-Stop button on remote 			
	<ul style="list-style-type: none"> • Four distinct transmitter signal output settings to maximize control resolution for creep operation 			
	<ul style="list-style-type: none"> • Transmitter shall have a color LCD readout providing the operator with feedback to allow explanation of current operating status 			
	<ul style="list-style-type: none"> • Dock for remote charging and storage included 			
	<ul style="list-style-type: none"> • Alkaline battery (AA x 3) backup included 			
	Remote Control – FM Radio:			

Bid Specifications – Telescopic Service Crane

	<ul style="list-style-type: none"> Operates on a rechargeable, internal, lithium-ion battery Has an estimated 300 foot operating range 			
	Remote Control – Tethered: <ul style="list-style-type: none"> 32 ft. communication cable included 			
	Receiver – FM Radio and tethered Remote <ul style="list-style-type: none"> Crane mounted and features IP65 rated 			
	See Options Section below for additional control configurations.			

Warranty	Manufacturer shall provide a two-year limited warranty against defects in materials and workmanship from the date of delivery			
-----------------	--	--	--	--

Options (Must be available as required)	Paint – provide code and desired color if other than standard			
	Boom Support shall be installed for the boom in a stowed position while in transit			
	Outriggers: <ul style="list-style-type: none"> Shall be installed to increase stability and reduce the load on the truck springs while lifting 			
	Oil Temperature Sensor to monitor crane hydraulic oil temperatures			

Notes:

Submitted by: _____

Date: _____

Bid Specifications – Telescopic Service Crane

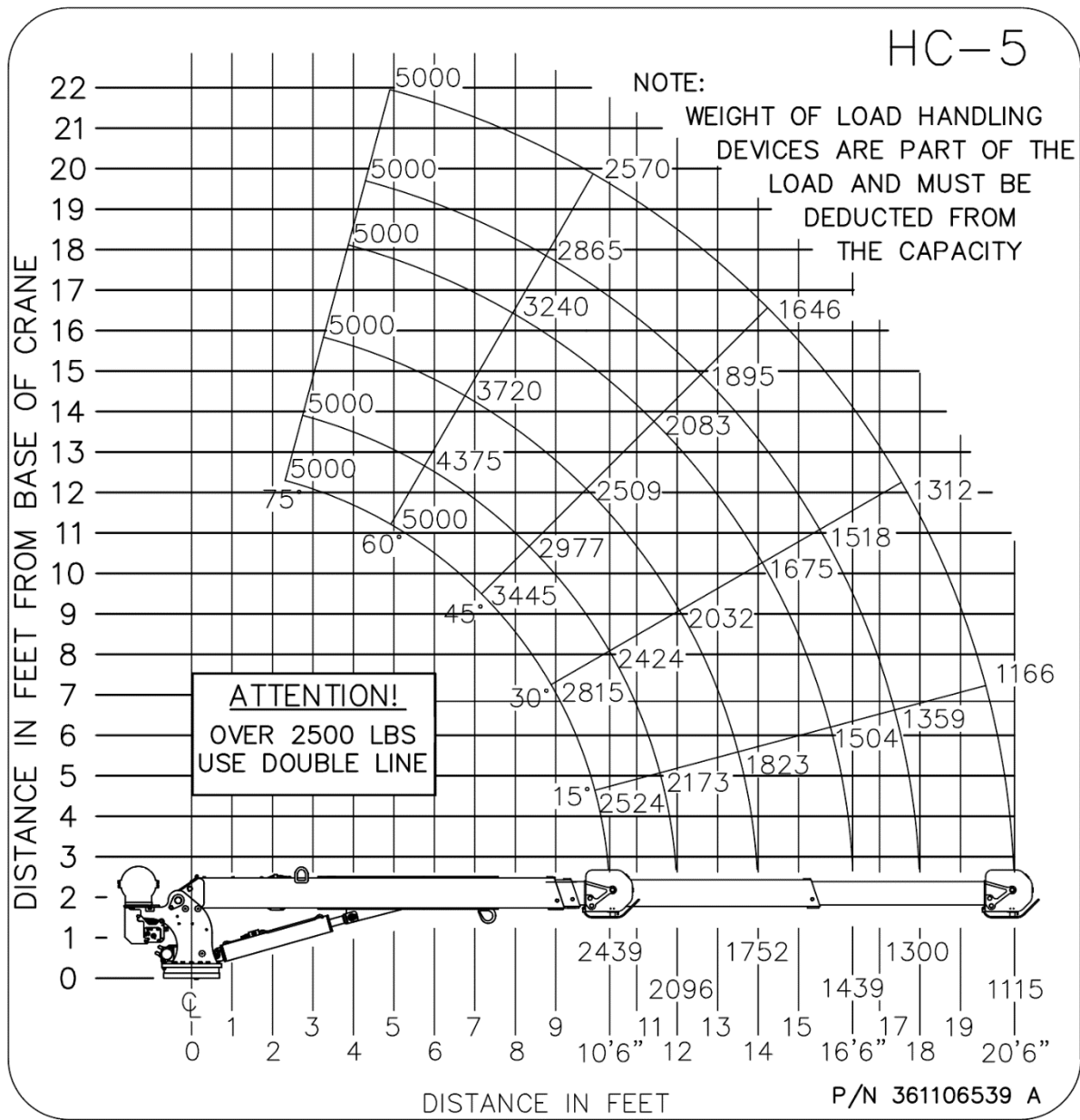


Figure 1: HC-5 Load Chart