

Body Cracking Repair Reference Sheet

This document was created to help the commercial/customer service team and supporting customers repair process for field cracking failures. There are three known potential failures of cracking on an Auto Crane Body. They are listed below along with which instructions to use.

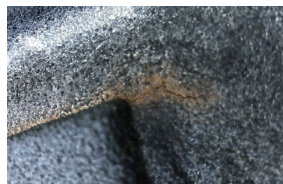
1. Transition Cracking – Cracking that occurs in the corner of a transition point of the body. Picture below is an example of a transition crack. Use the repair procedure labeled - **Transition Weld/Crack Repair Procedure**



2. Bulkhead Cracking – Cracking that occurs between the bulkhead and the side pack of the body. Picture below is an example of a bulkhead crack. Use the repair procedure labeled – **Bulkhead Weld/Crack Repair Procedure**



3. Boom Support Cracking – Cracking that occurs around the boom support mounting plate. The Picture below is an example of a boom support crack. Reference the below table for the correct boom support repair kit which needs to ship to dealer and includes the instructions for installation.



Part Number	Used on
715068043	All Titan 38 Standard through Titan 60 Standard Bodies (No Transition) – 84CA. All Titan 120CA Bodies without transition.
715068042	All Titan 120CA bodies with transition
715068044	All Titan 38 Tall Bodies

4. All other cracks – Use the repair procedure labeled – **Weld/Crack Repair Procedure**